

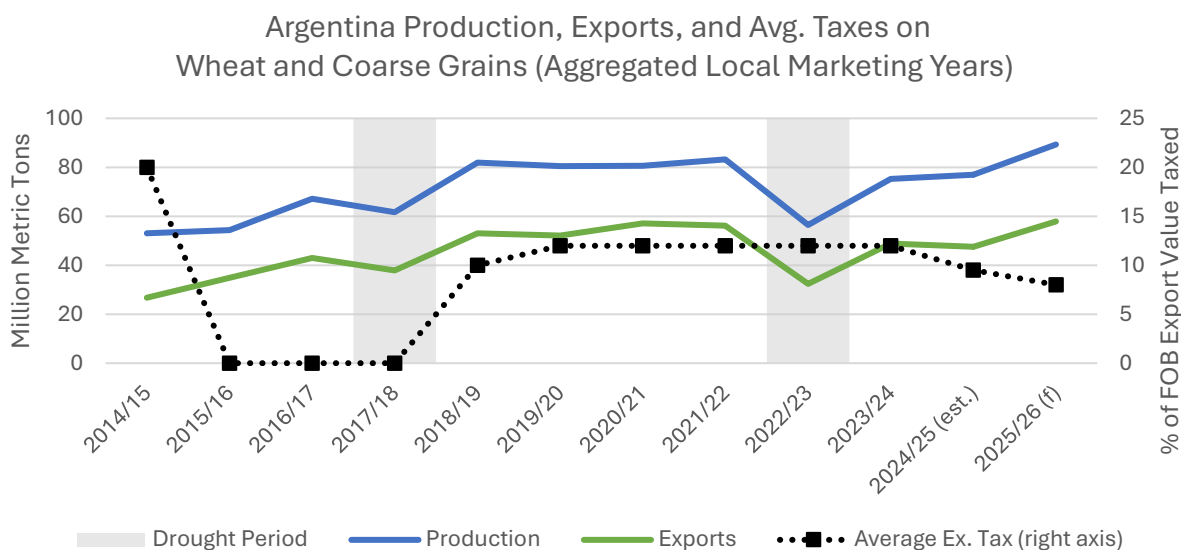
# Grain: World Markets and Trade

## Argentina Cuts Taxes Again, Enhancing Exports

On December 9, 2025, Argentina's Minister of Economy surprised markets by announcing export taxes on several major crops would be permanently reduced - which became effective on December 12, 2025, when Decree 877/2025 was published in the Official Bulletin. This solidified a long-term policy shift in Argentina, South America's second-largest exporter of grain. Among the major grains, wheat and barley tax rates have dropped from 9.5 to 7.5 percent, while corn and sorghum rates were cut from 9.5 to 8.5 percent<sup>1</sup>. With an average of 60 percent of Argentina grain supplies destined for export, lower taxes on exports could spur trade.

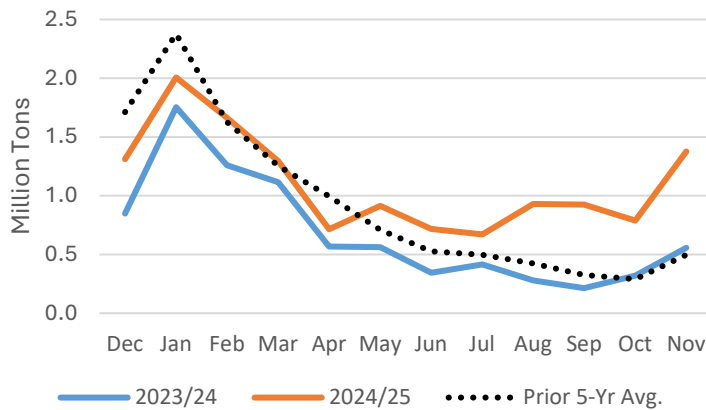
Since 2002/03, Argentina has levied export taxes on grains at rates typically between 10 and 20 percent to enhance government revenues and stabilize dollar reserves. The weight of these taxes has typically rested on the soy complex, which has higher rates and subsequently a higher share of total export tax revenues. However, grains are still deeply impacted. Exporters will often lower prices paid to producers to offset costs incurred from the tax, depressing farm revenues. The last significant reduction to export tax rates was in 2015/16 when they dropped to zero. This led to large boosts in grain output while exports increased by more than 4 million tons in 2016/17.

In early 2025, the Milei administration also made a cut to grain export taxes, from 12 to 9.5 percent, resulting in mixed gains for exports. Barley exports reached 3.4 million tons in 2024/25 (Dec/Nov), the second largest in the decade and 13 percent higher than last year, despite lower production. Wheat saw an even more impressive lift, with 2024/25 (Dec/Nov) exports at 13.3 million versus 8.2 million last year. Both commodities also benefited from weaker competition from major Black Sea exporters. In contrast, 2024/25 (Mar-Feb) corn exports were weaker as global trade fundamentals outweighed tax cuts. Competition from major exporters such as the United States and Brazil has curbed overseas market share for Argentina corn, lowering exports by 6.8 million to 29.5 million tons.



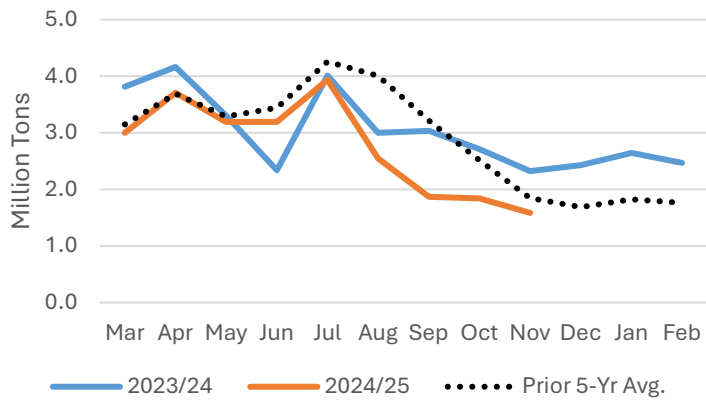
<sup>1</sup> GAIN report: [Argentine Government Further Reduces Export Taxes on Agricultural Commodities](#) | AR2025-0025

### Monthly Argentina Wheat Exports (local marketing year)



Source: Trade Data Monitor, LLC

### Monthly Argentina Corn Exports (local marketing year)



Source: Trade Data Monitor, LLC

Farmers in Argentina expect more potential tax cuts in 2026 - and a recent tax holiday presents a good analog for potential sectoral benefits under a scenario of total elimination. On September 22, 2025, the government of Argentina announced the removal of all export taxes on grains until October 31, 2025, or until \$7 billion in grains and oilseeds exports was reached.<sup>2</sup> Within 2 days, more than 1.7 million tons of wheat, over 950,000 tons of corn, and almost 200,000 tons of barley were registered for export<sup>2</sup>.

Looking ahead to 2025/26, grain production and exports are forecast to expand. Wheat (Dec/Nov) is expected to benefit, as output is estimated up 9.0 million year-over-year to 27.5 million tons, and exports are forecast 2.7 million higher to 16.0 million tons. Expectations of large production have pushed domestic prices to multi-year lows, and the extra margin from the reduced export tax may help partially offset lower prices.

Corn (Mar/Feb) could also benefit with production forecast to rise by 3.0 million to 53.0 million tons from 2024/25 and exports by 7.5 million tons, as larger exportable supplies will enhance competitiveness against the United States and Brazil. Barley (Dec/Nov) expectations are little changed as more modest growth in global demand for barley will likely cap gains.

<sup>2</sup> [Export affidavits submitted under the 682/2025 decree, as of 9/24/2025](#)

# TABLE OF CONTENTS

## World Markets and Trade: Commodities and Data

WHEAT .....	4
RICE .....	7
COARSE GRAINS .....	9
ENDNOTES.....	10
DATA TABLES .....	13

The Foreign Agricultural Service (FAS) updates its production, supply and distribution (PSD) database for cotton, oilseeds, and grains at 12:00 p.m. on the day the *World Agricultural Supply and Demand Estimates* (WASDE) report is released. This circular is released by 12:15 p.m.

**To download the tables in the publication,** go to Production, Supply and Distribution Database ([PSD Online](#)): scroll down to Reports, and then click Grains.

### **FAS Reports and Databases:**

[Current World Markets and Trade and World Agricultural Production Reports](#)

[Archived World Markets and Trade and World Agricultural Production Reports](#)

[Production, Supply and Distribution Database \(PSD Online\)](#)

[Global Agricultural Trade System \(U.S. Exports and Imports\)](#)

[Export Sales Report](#)

[Global Agricultural Information Network \(Agricultural Attaché Reports\)](#)

### **Other USDA Reports:**

[World Agricultural Supply and Demand Estimates \(WASDE\)](#)

[Economic Research Service](#)

[National Agricultural Statistics Service](#)

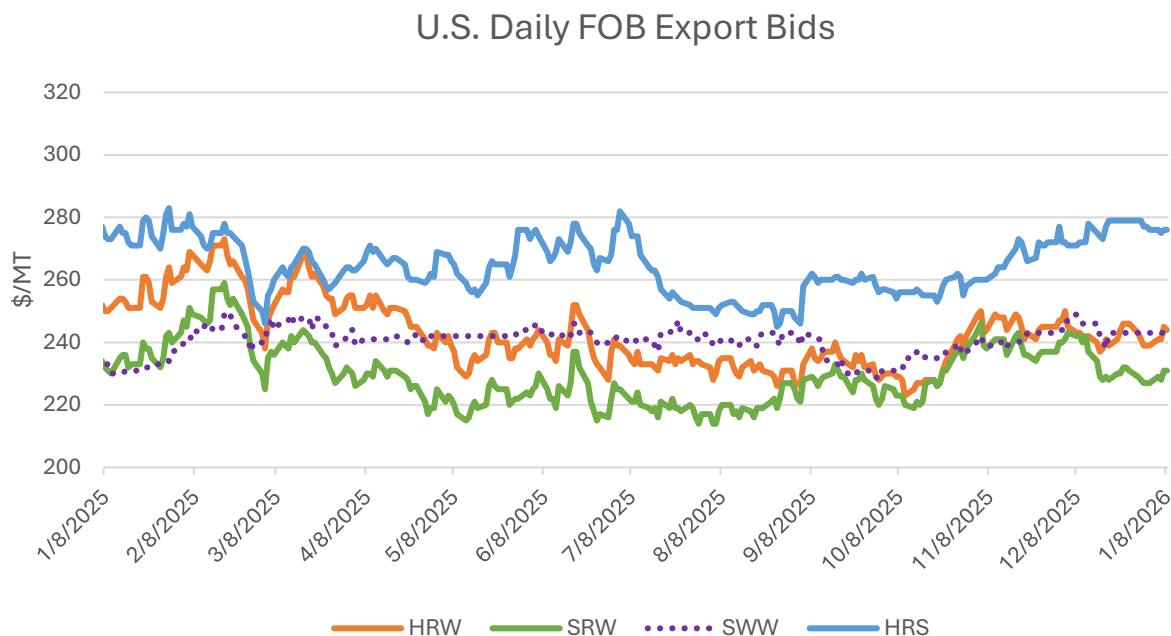
# WHEAT

## OVERVIEW FOR 2025/26

Global production is forecast higher this month to a new record, with increases to Argentina, Russia, and Brazil only partially offset by reductions to Turkey and Saudi Arabia. Global consumption is raised mainly on strong food, seed and industrial use in Morocco, offset by reductions in Pakistan and Turkey. Feed and residual use is up in Russia, Ukraine, and Argentina, tempered by cuts to Thailand and Pakistan. Stocks are boosted in Russia, Argentina, the European Union, and Brazil with larger supplies, while stocks in Turkey, Pakistan, and Kazakhstan contract. Global trade is up on larger imports for Morocco, Saudi Arabia, Japan, Vietnam, and others, moderated by decreases in Pakistan and Thailand. Exports are raised for Argentina and Kazakhstan, partly offset by reductions to Ukraine and the European Union. The U.S. season-average farm price is lowered 10 cents to \$4.90 per bushel.

## WHEAT PRICES

Domestic: Since December, U.S. wheat prices dropped for all classes except Hard Red Spring. Soft Red Winter lost \$10/ton to \$231 on pressure from canceled soft white sales to China, while Hard Red Winter lost \$6/ton to \$244 with ample global supplies. Soft White Winter fell \$1/ton to \$243. Conversely, Hard Red Spring increased \$4/ton to \$276



Note: Data as of January 8, 2026

Source: International Grains Council

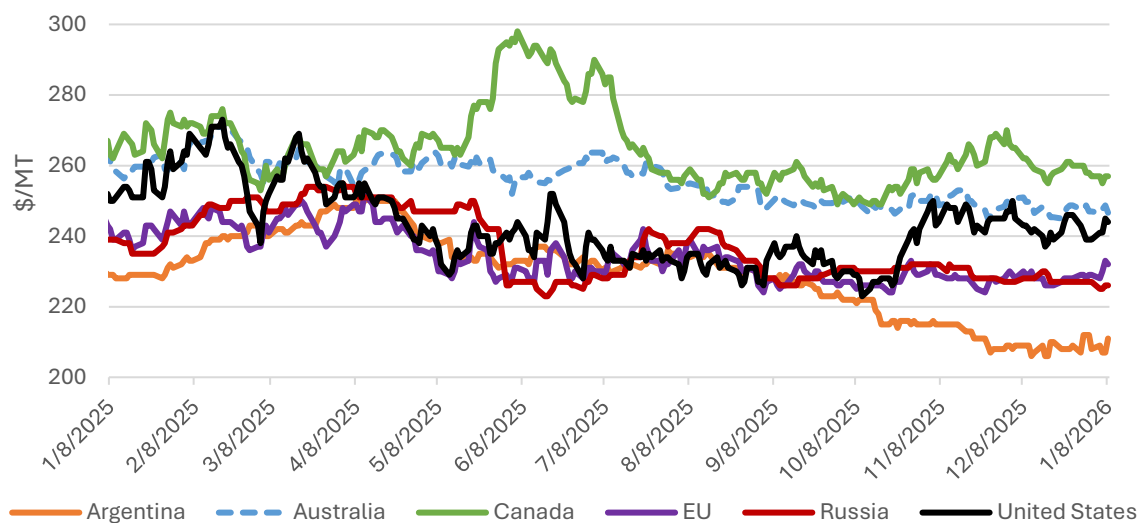
\*Note on FOB prices: HRW (Hard Red Winter); SRW (Soft Red Winter); SWW (Soft White Wheat); HRS (Hard Red Spring)

**Global:** Prices contracted for all major exporters since December, except for Argentina and the EU. Canadian quotes lost \$8/ton with strong global supplies but remain the highest export prices. The United States dropped \$6/ton as uncompetitive prices, canceled sales, and ample global supplies stymied new exports sales in recent weeks. Australian quotes shrank \$4/ton on harvest pressure. Russian quotes had minimal changes month over month and were down \$1/ton. Argentinian quotes ticked up \$3/ton on strong exports but remain the lowest by a wide margin. EU quotes also rose \$3/ton with concerns over damages to Ukrainian port infrastructure affecting wheat exports to the EU.

Argentina	Australia	Canada	EU	Russia	United States
<b>\$211</b>	<b>\$247</b>	<b>\$257</b>	<b>\$232</b>	<b>\$226</b>	<b>\$244</b>

Note: Data as of January 8, 2026

### International Daily FOB Export Bids



Source: International Grains Council

\*Note on FOB prices: Argentina- 12.0%, up river; Australia- average of APW; Kwinana, Newcastle, and Port Adelaide; Russia - Black Sea- milling; EU- France grade 1, Rouen; US- HRW 11.5% Gulf; Canada- CWRS (13.5%), Vancouver

## TRADE CHANGES IN 2025/26 (1,000 MT)

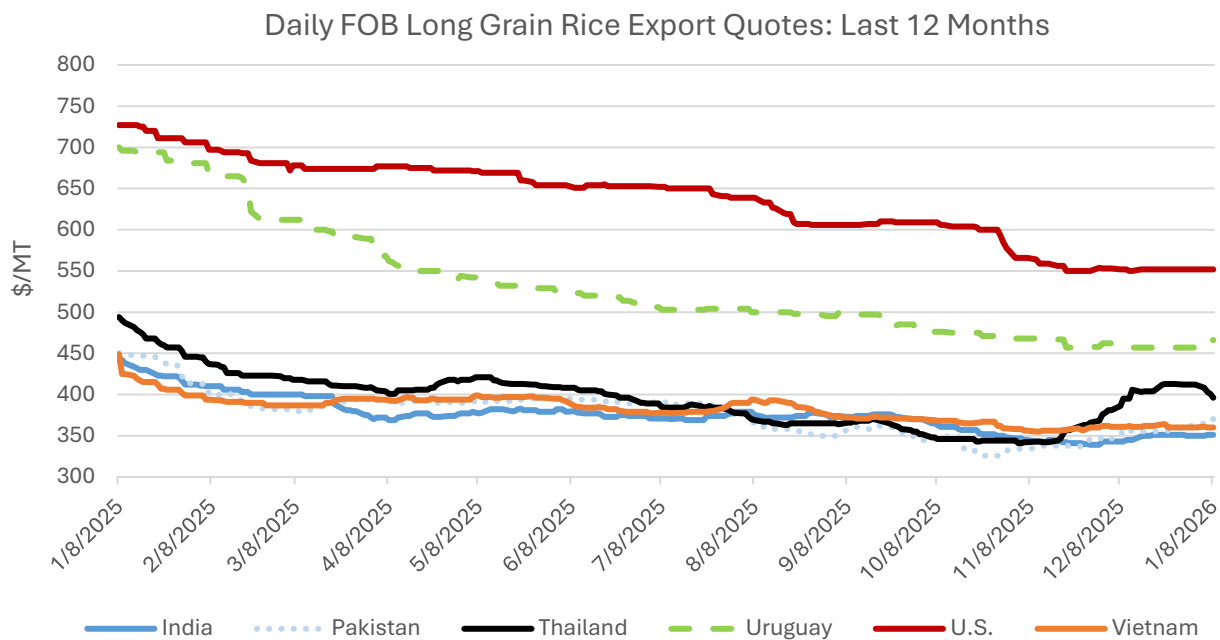
Country	Attribute	Previous	Current	Change	Reason
Japan	Imports	5,450	5,650	200	Smaller crop, pace of trade
Morocco	Imports	6,700	7,200	500	Strong import demand
Pakistan	Imports	1,500	500	-1,000	Import restrictions
Saudi Arabia	Imports	3,300	3,500	200	Smaller crop
Thailand	Imports	4,700	4,400	-300	Slow import demand
Vietnam	Imports	5,800	6,000	200	Strong pace of imports
Argentina	Exports	14,500	16,000	1,500	Record production and reduced export tax on wheat
European Union	Exports	33,000	32,500	-500	Slow pace of exports
Kazakhstan	Exports	9,000	9,500	500	Strong pace of exports
Ukraine	Exports	14,500	14,000	-500	Slow pace of exports

# RICE

## OVERVIEW FOR 2025/26

Global rice production is up from last month, primarily due to increases for China, Japan, and Bangladesh. Global trade is slightly up this month with an increase to China exports more than offsetting a reduction for Pakistan. Global consumption is slightly up on upward revisions for China and the United States. Global stocks are forecast higher with increases for Bangladesh, China, and Japan.

## RICE PRICES



Source: International Grains Council

Note on FOB quotes: Thai 100B, U.S. 4%, all others 5% broken white rice

Since the December *WASDE*, aside from the United States and Vietnam, global export quotes increased. U.S. quotes dropped \$1 to \$552/ton on weaker sales to Latin America. Uruguayan quotes rose \$4 to \$466/ton on continued sales to Latin America. Indian quotes are up, increasing \$8 to \$351/ton. Vietnamese quotes decreased \$2 to \$360/ton reflecting below-average sales to the Philippines. Thai quotes are up \$15 to \$396/ton amid stronger market demand. Pakistani quotes jumped \$21 to \$370/ton given strong interest from core markets.

## TRADE CHANGES IN 2026 (1,000 MT)

Country	Attribute	Previous	Current	Change	Reason
Afghanistan	Imports	500	400	-100	Border trade restrictions with Pakistan
Cote d'Ivoire	Imports	1,700	1,900	200	Growing consumption
China	Exports	1,300	1,600	300	Larger crop
Pakistan	Exports	5,000	4,800	-200	Increased competition from lower-priced Asian exporters
United States	Exports	3,000	2,900	-100	Lower priced competitors and outstanding sales for paddy rice are the lowest in over a decade

## TRADE CHANGES IN 2025 (1,000 MT)

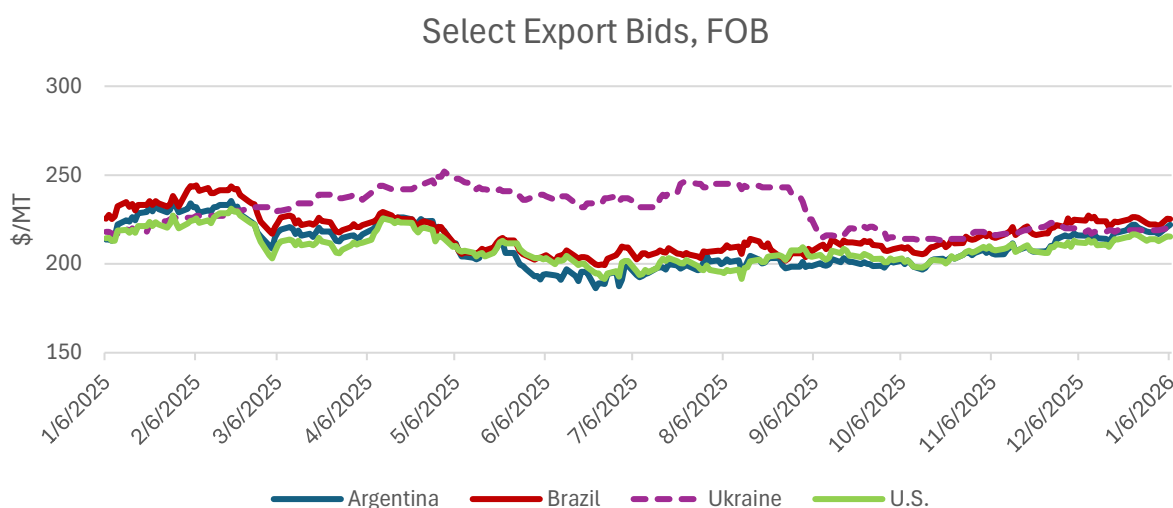
Country	Attribute	Previous	Current	Change	Reason
Philippines	Imports	3,500	3,625	125	Finalized data
United Arab Emirates	Imports	950	1,130	180	Increased imports of India and Pakistan rice
China	Exports	1,400	1,600	200	Large sales to Sub-Saharan Africa
India	Exports	22,500	22,000	-500	Reduced sales to Sub-Saharan Africa
Thailand	Exports	7,600	7,900	300	Increased pace of exports
United States	Exports	2,950	2,800	-150	Weak sales and shipments of paddy rice to Latin American markets

# COARSE GRAINS

## OVERVIEW FOR 2025/26

Global corn production is forecast up this month on higher production in the United States and China. Global trade is essentially unchanged, as are global imports. The U.S. season-average farm price is up 10 cents to \$4.10 per bushel.

## CORN PRICES



Source: International Grains Council

Export bids (fob, US\$ per ton)	5-Jan-26	5-Dec-25	6-Jan-25	% change, '25-'26
Argentina, Up River	221	216	214	3%
Brazil, Paranaguá	225	225	225	0%
Ukraine	220	220	218	1%
U.S. 3YC, Gulf	216	212	214	1%

**Global:** Since December, global corn export bids edged higher. Argentine bids climbed \$5 to \$221/ton ahead of next month's harvest as persistent heat and dryness raised concerns about lower yields and tighter supplies. Brazilian bids held steady as the export season reaches its tail. U.S. bids increased \$4 to \$216/ton, supported by robust foreign buying and firm global demand. Ukrainian bids were unchanged month to month at \$220/ton.

## TRADE CHANGES IN 2025/26 (1,000 MT) – No changes to note

# **ENDNOTES**

## **REGIONAL TABLES**

North America: Canada, Mexico, the United States

Central America: Belize, Costa Rica, El Salvador, Guatemala, Honduras, Nicaragua, Panama

Caribbean: Cuba, Dominican Republic, Haiti, Jamaica, Trinidad and Tobago

South America: Argentina, Bolivia, Brazil, Chile, Colombia, Ecuador, Guyana, Paraguay, Peru, Suriname, Uruguay, Venezuela

EU: Austria, Belgium/Luxembourg, Bulgaria, Croatia, Cyprus, Czech Republic, Denmark, Estonia, Finland, France, Germany, Greece, Hungary, Ireland, Italy, Latvia, Lithuania, Malta, Netherlands, Poland, Portugal, Romania, Slovakia, Slovenia, Spain, and Sweden. Effective January 1, 2021, the separation of the United Kingdom (UK) from the European Union (EU) was complete, including trade between both entities. Starting in May 2021 with the release of 2021/22 data, grain PSDs reflect EU27 (shown in the PSD system as “European Union”) and UK separately. Beginning with the release of 2021/22 data, historical data for both EU27 and the UK are provided for 5 years (2016/17 through 2020/21). See below for notes on prior years’ EU Consolidated data.

Other Europe: Albania, Bosnia and Herzegovina, Former Yugoslavia, Gibraltar, Iceland, North Macedonia, Montenegro, Norway, Serbia, Switzerland, United Kingdom

Former Soviet Union: Armenia, Azerbaijan, Belarus, Georgia, Kazakhstan, Kyrgyzstan, Moldova, Russia, Tajikistan, Turkmenistan, Ukraine, Uzbekistan

Middle East: Bahrain, Iran, Iraq, Israel, Jordan, Kuwait, Lebanon, Oman, Qatar, Saudi Arabia, Syria, Turkey, United Arab Emirates, Yemen

North Africa: Algeria, Egypt, Libya, Morocco, Tunisia

Sub-Saharan Africa: all African countries except North Africa

East Asia: China, Hong Kong, Japan, South Korea, North Korea, Macau, Mongolia, Taiwan

South Asia: Afghanistan, Bangladesh, Bhutan, India, Nepal, Pakistan, Sri Lanka

Southeast Asia: Brunei, Burma, Cambodia, Indonesia, Laos, Malaysia, Philippines, Singapore, Thailand, Vietnam

Oceania: Australia, Fiji, New Zealand, Papua New Guinea

## OTHER NOTES

**Marketing Years (MY):** MY refers to the 12-month period at the onset of the main harvest, when the crop is marketed (i.e., consumed, traded, or stored). The year first listed begins a country's MY for that commodity (2024/25 starts in 2024); except for summer grains in certain Southern Hemisphere countries and for rice in selected countries, where the second year begins the MY (2024/25 starts in 2025). Key exporter MYs are:

Wheat	Corn	Barley	Sorghum
Argentina (Dec/Nov)	Argentina (Mar/Feb)	Australia (Nov/Oct)	Argentina (Mar/Feb)
Australia (Oct/Sep)	Brazil (Mar/Feb)	Canada (Aug/Jul)	Australia (Mar/Feb)
Canada (Aug/Jul)	Russia (Oct/Sep)	European Union (Jul/Jun)	United States (Sep/Aug)
China (Jul/Jun)	South Africa (May/Apr)	Kazakhstan (Jul/Jun)	
European Union (Jul/Jun)	Ukraine (Oct/Sep)	Russia (Jul/Jun)	
India (Apr/Mar)	United States (Sep/Aug)	Ukraine (Jul/Jun)	
Kazakhstan (Sep/Aug)		United States (Jun/May)	
Russia (Jul/Jun)			
Turkey (Jun/May)			
Ukraine (Jul/Jun)			
United States (Jun/May)			

For a complete list of local marketing years, please see the FAS website (<https://apps.fas.usda.gov/psdonline/>): go to Reports, Reference Data, and then Data Availability.

**Prices:** Many export bids and quotes in this publication are Free-On Board (FOB). FOB is a term of sale meaning that the shipper will pay all costs to deliver and load the cargo at a specified place, usually a ship, and then the receiver pays the costs from there on — normally the ocean freight, insurance, and all subsequent costs of unloading and delivery. All references to ton, unless otherwise specified, refer to metric tons – 2,204.62 U.S. pounds/1,000 kilograms.

**Stocks:** Unless otherwise stated, stock data are based on an aggregate of differing local marketing years and should not be construed as representing world stock levels at a fixed point in time.

**Consumption:** World totals for consumption reflect total utilization, including food, seed, industrial, feed, and waste; as well as differences in local marketing year imports and local marketing year exports. Consumption statistics for regions and individual countries, however, reflect food, seed, industrial, feed, and waste only.

**Trade:** All PSD tables are balanced on the different local marketing years. All trade tables contain Trade Year (TY) data which puts all countries on a uniform, 12-month period for analytical comparisons: wheat is July/June; coarse grains, corn, barley, sorghum, oats, and rye are Oct/Sept; and rice is calendar year (TY 2024/25 corresponds to Jan – Dec 2025).

#### European Union:

From 2016/17 onwards, the European Union PSD data includes 27 member countries, excluding intra-trade between the member states. The trade figures starting from 1999/00 through 2015/16 represent the European Union (EU-27 plus UK) and excludes all intra-trade. For the years 1960/61 through 1998/99, figures are the EU-15 and also exclude all intra-trade. EU-15 member states' data for grains are no longer maintained in the official USDA database. Data for the individual NMS-10, plus Bulgaria, Romania, and Croatia, exists only prior to 1999/00.

Statistics: (1) Wheat trade statistics include wheat (1001), flour (1101), bulgur (190430), and selected pasta products (190219, 190230, and 190240) on a grain-equivalent basis (all wheat flour and products are multiplied by 1.368). (2) Rice trade statistics include rough (100610), brown (100620), milled (100630), and broken (100640) on a milled-equivalent basis (rough rice is multiplied by 0.7 and brown rice is multiplied by 0.875). (3) Coarse grains statistics include corn, barley, sorghum, oats, rye, millet, and mixed grains but exclude trade in barley malt, millet, and mixed grains.

Unaccounted: This term includes grain in transit, reporting discrepancies in some countries, and trade to countries outside the USDA database.

The Global Commodity Analysis Division, Global Market Analysis, Foreign Agricultural Service, USDA, Washington, DC 20250, prepared this publication. Information is gathered from official statistics of foreign governments and other foreign source materials, reports of U.S. agricultural attachés and Foreign Service officers, office research, and related information.

Note: For further details on world grain production, please see [World Agricultural Production](#) January 2026. This publication is available in its entirety on the Internet via the Foreign Agricultural Service Home Page. The address is: <http://www.fas.usda.gov>

<b>Hannah Austin</b>	<a href="mailto:Hannah.Austin@usda.gov">Hannah.Austin@usda.gov</a>	Wheat
<b>Kevin Min</b>	<a href="mailto:Kevin.Min1@usda.gov">Kevin.Min1@usda.gov</a>	Wheat/Coarse Grains
<b>Adolfo Escoto</b>	<a href="mailto:Adolfo.Escoto@usda.gov">Adolfo.Escoto@usda.gov</a>	Rice
<b>Nabil Hoq</b>	<a href="mailto:Nabil.Hoq@usda.gov">Nabil.Hoq@usda.gov</a>	Rice
<b>Eric Gero</b>	<a href="mailto:Eric.Gero@usda.gov">Eric.Gero@usda.gov</a>	Coarse Grains
<b>Victorino Floro</b>	<a href="mailto:Victorino.Floro@usda.gov">Victorino.Floro@usda.gov</a>	Coarse Grains

## **DATA TABLES**

Page Intentionally Left Blank

## All Grain Summary Comparison

Million Metric Tons

		Wheat			Rice, Milled			Corn		
Marketing Year		2023/24	2024/25	2025/26	2023/24	2024/25	2025/26	2023/24	2024/25	2025/26
<b>Production</b>										
United States	(Jun-May)	49.1	53.9	54.0	6.9	7.1	6.6	389.7	378.3	432.3
Other		743.3	746.9	788.2	517.1	534.2	534.6	841.0	852.6	863.7
<b>World Total</b>		792.4	800.8	842.2	524.0	541.3	541.2	1,230.7	1,230.9	1,296.0
<b>Domestic Consumption</b>										
United States	(Jun-May)	30.2	31.1	30.8	4.9	5.3	5.4	322.9	311.6	334.5
Other		767.8	769.6	788.9	516.5	521.7	533.2	902.7	939.4	950.4
<b>World Total</b>		798.0	800.7	819.7	521.4	527.0	538.6	1,225.6	1,251.0	1,284.9
<b>Ending Stocks</b>										
United States	(Jun-May)	19.0	23.3	25.2	1.3	1.7	1.6	44.8	39.4	56.6
Other		251.0	236.7	253.1	178.9	189.5	188.7	270.6	255.3	234.3
<b>World Total</b>		270.0	260.0	278.3	180.2	191.2	190.3	315.4	294.7	290.9
<b>TY Imports</b>										
United States	(Jun-May)	3.8	4.1	3.3	1.5	1.5	1.6	0.7	0.5	0.7
Other		217.7	196.3	212.4	56.2	55.7	58.9	198.5	186.5	189.6
<b>World Total</b>		221.5	200.4	215.7	57.7	57.2	60.5	199.2	187.0	190.3
<b>TY Exports</b>										
United States	(Jun-May)	19.6	22.7	24.5	3.3	2.8	2.9	58.5	75.2	80.0
Other		205.6	181.7	195.2	56.6	56.9	59.9	139.0	115.8	117.9
<b>World Total</b>		225.2	204.4	219.7	59.9	59.7	62.8	197.5	191.0	197.9

Note: Consumption in this table has not been adjusted for differences in marketing year imports and exports and therefore differs from global totals shown elsewhere. Marketing years for U.S. grains are: Wheat (Jun-May), Rice (Aug-Jul), Corn (Sep-Aug). 'Marketing Year' column is germane for U.S. wheat only.

**World Wheat, Flour, and Products Trade**  
**July/June Year, Thousand Metric Tons**

	2021/22	2022/23	2023/24	2024/25	2025/26 Dec	2025/26 Jan
<b>TY Exports</b>						
Russia	34,000	49,000	55,500	43,000	44,000	44,000
European Union	31,927	35,083	38,012	27,869	33,000	32,500
Canada	15,010	25,334	25,660	28,519	28,000	28,000
Australia	25,958	32,329	22,504	21,295	27,000	27,000
Argentina	17,651	4,681	7,282	10,406	14,500	16,000
Ukraine	18,844	17,122	18,577	15,751	14,500	14,000
Kazakhstan	8,459	9,862	8,409	9,986	9,000	9,500
Turkey	6,646	6,953	9,998	7,148	6,500	6,500
Brazil	3,105	2,689	2,812	1,897	2,500	2,500
Egypt	300	661	1,851	2,352	2,000	2,000
Others	22,869	13,900	15,001	13,528	13,163	13,213
<b>Subtotal</b>	184,769	197,614	205,606	181,751	194,163	195,213
<b>United States</b>	21,347	20,250	19,615	22,683	24,500	24,500
<b>World Total</b>	206,116	217,864	225,221	204,434	218,663	219,713
<b>TY Imports</b>						
Egypt	11,256	11,218	12,440	12,428	13,000	13,000
Indonesia	11,271	9,446	13,015	10,452	12,500	12,500
Algeria	8,500	8,600	9,600	9,100	9,500	9,500
Philippines	6,886	5,750	6,915	6,351	7,600	7,600
Brazil	6,582	4,985	5,917	7,299	7,500	7,500
Turkey	9,555	12,500	8,921	2,985	7,500	7,500
Morocco	4,725	5,770	6,205	6,328	6,700	7,200
Bangladesh	6,340	5,120	6,650	5,800	6,700	6,700
Mexico	5,326	5,232	5,292	5,567	6,700	6,700
Nigeria	6,226	4,703	5,105	6,217	6,700	6,700
China	9,568	13,282	13,627	4,171	6,000	6,000
Vietnam	4,517	4,317	5,403	5,700	5,800	6,000
Japan	5,605	5,452	5,346	5,573	5,450	5,650
European Union	4,631	12,228	12,659	10,646	5,500	5,500
Korea, South	5,099	4,533	4,989	4,596	4,900	4,900
Afghanistan	4,000	4,350	4,600	4,300	4,600	4,600
Thailand	2,351	3,163	3,316	4,684	4,700	4,400
Uzbekistan	3,318	3,869	3,616	4,100	4,300	4,300
Yemen	3,437	4,145	3,994	3,774	3,950	3,950
Saudi Arabia	3,052	5,260	3,890	3,100	3,300	3,500
United Kingdom	2,634	2,030	3,136	3,797	3,500	3,500
Iran	8,000	3,600	2,000	1,200	3,000	3,000
Iraq	2,605	3,972	2,765	2,700	3,000	3,000
Kenya	2,008	2,198	2,475	2,225	2,600	2,600
Sudan	2,381	2,276	2,279	2,640	2,550	2,550
Others	59,606	60,618	63,602	60,560	63,770	64,120
<b>Subtotal</b>	199,479	208,617	217,757	196,293	211,320	212,470
<b>Unaccounted</b>	3,906	5,978	3,695	4,069	4,093	3,993
<b>United States</b>	2,731	3,269	3,769	4,072	3,250	3,250
<b>World Total</b>	206,116	217,864	225,221	204,434	218,663	219,713

TY=Trade Year, see Endnotes.

# World Wheat Production, Consumption, and Stocks

Local Marketing Years, Thousand Metric Tons

	2021/22	2022/23	2023/24	2024/25	2025/26 Dec	2025/26 Jan
<b>Production</b>						
European Union	138,479	134,492	135,375	122,147	144,000	144,000
China	136,946	137,723	136,590	140,099	140,000	140,070
India	109,586	104,000	110,554	113,292	117,945	117,945
Russia	75,158	92,000	91,500	81,600	87,500	89,500
Canada	22,422	34,879	33,414	35,939	39,955	39,955
Australia	36,237	40,545	25,960	34,110	37,000	37,000
Pakistan	27,464	26,209	28,161	31,438	28,980	28,980
Argentina	22,150	12,550	15,850	18,510	24,000	27,500
Ukraine	33,007	21,500	23,000	23,400	23,000	23,000
Kazakhstan	11,814	16,404	12,111	18,577	18,900	18,900
Turkey	16,000	17,250	21,000	19,000	19,000	18,000
Iran	12,000	13,200	14,000	16,000	13,500	13,500
United Kingdom	13,988	15,540	13,980	11,146	11,850	11,850
Egypt	9,842	9,500	8,870	9,000	9,200	9,200
Brazil	7,679	10,554	8,097	7,889	7,700	8,000
Others	63,244	59,231	64,793	64,809	61,267	60,757
<b>Subtotal</b>	<b>736,016</b>	<b>745,577</b>	<b>743,255</b>	<b>746,956</b>	<b>783,797</b>	<b>788,157</b>
<b>United States</b>	<b>44,804</b>	<b>44,898</b>	<b>49,095</b>	<b>53,851</b>	<b>54,010</b>	<b>54,010</b>
<b>World Total</b>	<b>780,820</b>	<b>790,475</b>	<b>792,350</b>	<b>800,807</b>	<b>837,807</b>	<b>842,167</b>
<b>Total Consumption</b>						
China	148,000	148,000	153,500	150,000	148,000	148,000
European Union	108,250	109,000	110,500	109,000	114,500	114,500
India	109,882	108,665	112,342	108,961	112,510	112,510
Russia	40,750	41,000	39,000	40,000	41,200	41,700
Pakistan	27,700	29,000	30,200	31,200	31,500	31,000
Egypt	20,500	20,550	20,500	20,000	20,000	20,000
Turkey	19,700	19,900	19,400	19,200	19,400	19,200
Iran	18,200	18,100	17,300	16,900	16,950	16,950
United Kingdom	15,324	15,200	15,594	15,025	15,300	15,300
Brazil	11,750	11,850	12,000	12,200	12,350	12,350
Algeria	11,370	11,570	11,750	11,950	12,250	12,250
Indonesia	10,500	9,800	11,400	10,800	11,800	11,800
Canada	9,621	8,279	8,961	8,432	10,350	10,350
Morocco	10,500	10,000	9,700	9,400	9,600	10,050
Afghanistan	8,250	8,500	9,200	9,500	9,500	9,500
Others	186,904	182,168	186,429	196,981	202,029	203,394
<b>Subtotal</b>	<b>760,388</b>	<b>760,736</b>	<b>766,775</b>	<b>779,738</b>	<b>791,560</b>	<b>793,075</b>
<b>United States</b>	<b>30,411</b>	<b>30,361</b>	<b>30,180</b>	<b>31,120</b>	<b>31,407</b>	<b>30,835</b>
<b>World Total</b>	<b>790,799</b>	<b>791,097</b>	<b>796,955</b>	<b>810,858</b>	<b>822,967</b>	<b>823,910</b>
<b>Ending Stocks</b>						
China	136,759	138,818	134,523	127,777	124,777	124,847
India	19,500	9,500	7,500	11,800	17,235	17,235
Russia	12,088	14,388	11,688	10,588	13,188	14,688
European Union	13,631	16,268	15,790	11,714	13,714	14,214
Canada	4,169	5,706	5,278	4,112	6,317	6,317
Algeria	4,351	4,981	5,531	5,681	6,131	6,131
Argentina	1,926	3,967	4,537	2,599	4,517	6,009
Others	64,494	65,522	66,245	62,462	64,472	63,602
<b>Subtotal</b>	<b>256,918</b>	<b>259,150</b>	<b>251,092</b>	<b>236,733</b>	<b>250,351</b>	<b>253,043</b>
<b>United States</b>	<b>18,355</b>	<b>15,501</b>	<b>18,954</b>	<b>23,262</b>	<b>24,522</b>	<b>25,209</b>
<b>World Total</b>	<b>275,273</b>	<b>274,651</b>	<b>270,046</b>	<b>259,995</b>	<b>274,873</b>	<b>278,252</b>

## Regional Wheat Imports, Production, Consumption, and Stocks

Thousand Metric Tons

	2021/22	2022/23	2023/24	2024/25	Dec 2025/26	Jan 2025/26
<b>TY Imports</b>						
North America	8,614	9,046	9,618	10,235	10,550	10,550
Central America	2,160	2,092	2,231	2,466	2,300	2,300
South America	14,855	13,150	14,271	16,024	17,165	17,475
European Union	4,631	12,228	12,659	10,646	5,500	5,500
Other Europe	4,412	3,644	4,904	5,737	5,375	5,375
Former Soviet Union - 12	10,577	12,846	10,640	9,622	10,020	10,095
Middle East	35,113	38,275	30,196	22,425	30,300	30,500
North Africa	27,471	29,109	31,775	31,724	33,000	33,600
Sub-Saharan Africa	26,924	24,501	28,263	30,694	30,855	31,595
East Asia	22,166	25,079	25,988	16,315	18,350	18,550
South Asia	13,945	13,388	16,022	11,286	14,160	13,185
Southeast Asia	27,957	25,203	31,331	30,019	33,490	33,390
Others	3,385	3,325	3,628	3,172	3,505	3,605
<b>Total</b>	<b>202,210</b>	<b>211,886</b>	<b>221,526</b>	<b>200,365</b>	<b>214,570</b>	<b>215,720</b>
<b>Production</b>						
North America	70,510	83,388	85,985	92,438	95,715	95,715
South America	33,424	27,031	28,435	30,814	35,921	39,721
European Union	138,479	134,492	135,375	122,147	144,000	144,000
Other Europe	18,856	20,450	19,053	16,086	16,820	16,820
Former Soviet Union - 12	134,227	144,588	141,147	138,862	143,965	145,965
Middle East	34,457	36,234	44,798	45,560	39,925	38,525
North Africa	21,279	17,260	16,370	15,839	17,450	17,450
Sub-Saharan Africa	9,813	9,505	9,435	9,603	9,918	9,918
East Asia	138,736	139,288	138,299	141,683	141,653	141,613
South Asia	144,299	137,211	147,021	153,130	154,925	154,925
Oceania	36,660	40,948	26,352	34,575	37,445	37,445
Others	80	80	80	70	70	70
<b>Total</b>	<b>780,820</b>	<b>790,475</b>	<b>792,350</b>	<b>800,807</b>	<b>837,807</b>	<b>842,167</b>
<b>Domestic Consumption</b>						
North America	47,457	46,440	47,041	47,552	50,107	49,535
South America	29,597	29,700	30,085	30,940	32,405	32,750
European Union	108,250	109,000	110,500	109,000	114,500	114,500
Other Europe	20,534	20,360	21,024	20,385	20,870	20,870
Former Soviet Union - 12	76,800	76,250	72,620	77,100	78,440	79,465
Middle East	63,180	63,651	63,341	63,762	63,870	63,670
North Africa	46,920	46,720	46,480	46,150	46,850	47,400
Sub-Saharan Africa	35,588	34,428	35,863	39,081	39,929	40,439
East Asia	161,354	160,683	166,548	162,678	161,050	161,130
South Asia	157,627	156,056	162,125	160,103	164,410	163,935
Southeast Asia	26,595	25,430	28,600	29,220	31,220	30,920
Oceania	10,015	9,665	9,945	10,735	10,815	10,825
Others	3,695	3,560	3,784	3,963	4,180	4,250
<b>Total</b>	<b>787,612</b>	<b>781,943</b>	<b>797,956</b>	<b>800,669</b>	<b>818,646</b>	<b>819,689</b>
<b>Ending Stocks</b>						
North America	23,038	21,964	25,007	28,229	31,694	32,381
South America	4,980	7,747	7,998	6,738	8,894	10,851
European Union	13,631	16,268	15,790	11,714	13,714	14,214
Other Europe	2,917	3,783	4,656	4,072	3,272	3,272
Former Soviet Union - 12	22,604	24,978	18,778	18,420	23,655	24,735
Middle East	15,537	19,289	21,299	17,516	16,161	15,386
North Africa	12,716	12,067	11,536	10,383	11,863	11,913
Sub-Saharan Africa	4,479	3,355	4,293	4,658	4,422	4,652
East Asia	139,798	141,701	137,504	130,778	127,776	127,756
South Asia	26,145	14,658	14,677	18,216	22,356	21,856
Southeast Asia	4,774	3,234	4,613	3,934	4,859	5,009
Oceania	3,848	4,685	2,801	4,250	5,390	5,410
Others	806	922	1,094	1,087	817	817
<b>Total</b>	<b>275,273</b>	<b>274,651</b>	<b>270,046</b>	<b>259,995</b>	<b>274,873</b>	<b>278,252</b>

NOTES: Regional definitions appear on last page of this circular. Imports are reported on a trade year basis. All other data are reported using local marketing years.

**World Rice Trade**  
**January/December Year, Thousand Metric Tons**

	2021/22	2022/23	2023/24	2024/25	2025/26 Dec	2025/26 Jan
<b>TY Exports</b>						
India	22,122	17,716	17,888	22,000	25,000	25,000
Vietnam	7,054	8,225	9,035	8,082	7,900	7,900
Thailand	7,682	8,736	9,886	7,900	7,500	7,500
Pakistan	4,562	4,523	6,492	4,300	5,000	4,800
Cambodia	2,800	3,450	3,700	3,800	4,000	4,000
Burma	2,121	1,584	2,745	2,400	2,500	2,500
China	2,172	1,602	1,115	1,600	1,300	1,600
Brazil	1,445	1,208	958	1,090	1,275	1,275
Uruguay	982	991	745	1,050	1,000	1,000
Paraguay	752	857	723	1,000	900	900
Guyana	338	399	467	525	500	500
Argentina	402	293	264	460	400	400
European Union	402	366	362	350	400	400
Turkey	227	258	293	250	225	225
South Africa	145	159	149	200	175	175
Others	1,621	1,429	1,776	1,934	1,695	1,760
<b>Subtotal</b>	54,827	51,796	56,598	56,941	59,770	59,935
<b>United States</b>	2,190	2,398	3,271	2,800	3,000	2,900
<b>World Total</b>	57,017	54,194	59,869	59,741	62,770	62,835
<b>TY Imports</b>						
Philippines	3,800	3,900	5,450	3,625	5,500	5,500
Vietnam	2,750	3,500	3,700	3,500	4,100	4,100
Nigeria	2,400	2,000	2,700	3,000	3,200	3,200
China	6,155	2,597	1,625	2,900	3,000	3,000
European Union	2,490	2,183	2,413	2,500	2,300	2,300
Iraq	2,124	1,845	2,125	2,200	2,225	2,225
Cote d'Ivoire	1,560	1,313	1,616	1,950	1,700	1,900
Saudi Arabia	1,324	1,487	1,775	1,850	1,850	1,850
Malaysia	1,240	1,410	1,695	1,500	1,700	1,700
Senegal	1,500	1,300	1,400	1,700	1,700	1,700
Guinea	850	870	1,065	1,200	1,250	1,250
South Africa	1,034	1,221	1,075	1,150	1,200	1,200
Iran	1,250	751	750	1,000	1,050	1,050
Bangladesh	950	365	200	2,000	1,000	1,000
United Arab Emirates	1,025	900	875	1,130	975	1,000
Ghana	620	810	850	1,100	925	925
Brazil	826	982	1,023	931	900	900
Cameroon	575	360	960	700	900	900
Mexico	875	734	878	875	900	900
Mozambique	685	740	890	900	900	900
Burkina Faso	706	767	854	860	900	900
Yemen	570	550	725	650	825	825
Indonesia	740	3,500	4,650	775	800	800
Japan	669	709	754	800	690	760
Madagascar	680	424	262	800	750	750
Others	17,508	15,804	15,928	16,052	17,319	17,349
<b>Subtotal</b>	54,906	51,022	56,238	55,648	58,559	58,884
<b>Unaccounted</b>	796	1,816	2,174	2,568	2,586	2,351
<b>United States</b>	1,315	1,356	1,457	1,525	1,625	1,600
<b>World Total</b>	57,017	54,194	59,869	59,741	62,770	62,835

TY=Trade Year, see Endnotes. Note about dates: 2016/17 is calendar year 2017, 2017/18 is calendar year 2018, and so on.

# World Rice Production, Consumption, and Stocks

Local Marketing Years, Thousand Metric Tons

	2021/22	2022/23	2023/24	2024/25	2025/26 Dec	2025/26 Jan
<b>Milled Production</b>						
India	129,471	135,755	137,825	150,000	152,000	152,000
China	148,990	145,946	144,620	145,275	146,000	146,329
Bangladesh	35,850	36,350	37,000	36,600	37,500	37,650
Indonesia	34,400	33,900	33,020	34,100	33,600	33,600
Vietnam	26,670	27,140	27,200	26,750	26,000	26,000
Thailand	19,878	20,909	20,000	20,843	20,400	20,400
Philippines	12,540	12,625	12,325	12,370	12,300	12,300
Burma	12,400	11,800	12,300	11,900	12,000	12,000
Pakistan	9,323	7,322	9,869	9,720	9,400	9,400
Cambodia	6,561	7,000	8,050	8,500	8,100	8,100
Brazil	7,337	6,822	7,199	8,675	7,600	7,600
Japan	7,636	7,480	7,297	7,294	7,280	7,540
Nigeria	5,255	5,408	5,607	5,765	5,544	5,544
Egypt	2,900	3,600	3,780	3,900	4,200	4,200
Nepal	3,417	3,654	3,812	3,666	3,800	3,800
Others	45,539	46,135	47,149	48,885	48,099	48,129
<b>Subtotal</b>	508,167	511,846	517,053	534,243	533,823	534,592
<b>United States</b>	6,066	5,082	6,922	7,053	6,582	6,563
<b>World Total</b>	514,233	516,928	523,975	541,296	540,405	541,155
<b>Consumption and Residual</b>						
China	156,360	154,994	148,115	144,957	146,600	146,929
India	110,444	114,513	116,403	121,173	127,000	127,000
Bangladesh	36,500	37,300	37,600	38,000	38,500	38,500
Indonesia	35,300	35,600	36,200	35,500	35,300	35,300
Vietnam	22,050	22,400	22,500	22,600	22,700	22,700
Philippines	15,400	16,100	16,800	17,400	17,600	17,600
Thailand	12,300	12,300	12,300	12,500	12,650	12,650
Burma	10,300	10,200	9,900	9,700	9,700	9,700
Nigeria	7,600	7,800	8,000	8,300	8,500	8,500
Japan	8,200	8,150	8,150	8,125	8,000	8,000
Brazil	7,150	7,000	7,100	7,350	7,350	7,350
Nepal	4,412	4,249	4,022	4,331	4,450	4,450
Cambodia	4,100	4,100	4,200	4,300	4,350	4,350
Pakistan	3,900	3,925	4,000	4,100	4,150	4,200
Egypt	4,050	4,000	4,050	4,050	4,150	4,100
Others	73,795	75,695	77,161	79,365	81,638	81,883
<b>Subtotal</b>	513,994	516,255	519,838	524,938	536,632	536,603
<b>United States</b>	4,740	4,595	4,882	5,298	5,271	5,429
<b>World Total</b>	518,734	520,850	524,720	530,236	541,903	542,032
<b>Ending Stocks</b>						
China	113,000	106,600	103,000	104,500	104,500	105,000
India	34,000	35,000	42,000	48,000	48,000	48,000
Indonesia	2,900	4,700	6,170	5,545	4,570	4,645
Philippines	3,103	3,378	3,403	3,793	3,098	3,093
Thailand	4,426	4,349	2,213	2,706	3,306	3,006
Nigeria	2,037	1,920	1,412	2,177	2,421	2,421
Bangladesh	2,091	2,409	1,826	1,728	1,923	2,273
Others	22,010	21,589	18,872	21,061	19,334	20,341
<b>Subtotal</b>	183,567	179,945	178,896	189,510	187,152	188,779
<b>United States</b>	1,261	961	1,265	1,711	1,679	1,565
<b>World Total</b>	184,828	180,906	180,161	191,221	188,831	190,344

Note: All data are reported on a milled basis.

# Regional Rice Imports, Production, Consumption, and Stocks

Thousand Metric Tons

	2021/22	2022/23	2023/24	2024/25	Dec 2025/26	Jan 2025/26
<b>TY Imports</b>						
North America	2,714	2,563	2,790	2,875	3,035	3,010
Caribbean	1,021	1,165	1,240	1,000	1,085	1,085
South America	1,815	1,936	1,860	1,671	1,746	1,746
Other Europe	729	749	778	785	805	805
Former Soviet Union - 12	666	570	767	700	860	810
Middle East	7,947	7,424	7,951	8,665	8,885	8,910
North Africa	863	731	564	775	610	700
Sub-Saharan Africa	16,979	15,513	17,401	19,142	19,630	19,910
East Asia	7,738	4,100	3,202	4,500	4,598	4,668
South Asia	3,089	1,389	1,317	3,240	2,310	2,220
Southeast Asia	9,143	12,954	16,164	10,170	12,945	12,945
European Union	2,490	2,183	2,413	2,500	2,300	2,300
<b>Total</b>	<b>56,221</b>	<b>52,378</b>	<b>57,695</b>	<b>57,173</b>	<b>60,184</b>	<b>60,484</b>
<b>Production</b>						
North America	6,248	5,247	7,075	7,223	6,759	6,740
Caribbean	885	841	667	785	782	782
South America	16,529	16,031	16,468	18,935	17,645	17,645
European Union	1,732	1,292	1,371	1,595	1,770	1,770
Former Soviet Union - 12	1,339	1,177	1,309	1,461	1,353	1,383
Middle East	2,723	2,607	2,560	2,857	2,770	2,770
North Africa	2,945	3,642	3,825	3,936	4,248	4,248
Sub-Saharan Africa	20,548	22,194	23,249	23,289	22,700	22,700
East Asia	162,921	159,653	158,093	158,782	159,448	160,037
South Asia	181,065	186,167	191,862	203,467	206,270	206,420
Southeast Asia	116,077	117,025	116,406	117,939	115,851	115,851
<b>Total</b>	<b>514,233</b>	<b>516,928</b>	<b>523,975</b>	<b>541,296</b>	<b>540,405</b>	<b>541,155</b>
<b>Domestic Consumption</b>						
North America	6,153	5,983	6,331	6,753	6,776	6,934
Central America	1,396	1,408	1,435	1,472	1,533	1,538
Caribbean	1,860	1,949	1,718	1,795	1,830	1,830
South America	14,945	14,820	14,790	15,242	15,392	15,392
European Union	3,500	3,300	3,250	3,500	3,600	3,600
Former Soviet Union - 12	1,716	1,605	1,910	1,850	2,052	2,002
Middle East	9,617	9,832	10,339	10,670	11,330	11,370
North Africa	4,359	4,329	4,599	4,551	4,708	4,723
Sub-Saharan Africa	36,621	38,629	38,967	40,518	41,769	42,054
East Asia	171,445	169,913	163,298	160,185	161,388	161,717
South Asia	159,191	163,948	166,220	171,667	178,270	178,220
Southeast Asia	104,673	106,055	107,329	107,616	107,996	107,996
<b>Total</b>	<b>516,601</b>	<b>522,921</b>	<b>521,383</b>	<b>527,049</b>	<b>537,909</b>	<b>538,641</b>
<b>Ending Stocks</b>						
North America	1,414	1,081	1,381	1,858	1,861	1,759
Central America	175	255	232	226	301	259
Caribbean	340	357	346	407	424	424
South America	2,291	1,882	2,004	3,156	2,675	2,680
European Union	905	828	700	994	1,066	1,064
Middle East	1,753	2,171	2,048	2,465	2,331	2,475
North Africa	611	601	455	311	440	386
Sub-Saharan Africa	3,799	4,364	3,376	4,589	4,660	4,935
East Asia	116,721	110,309	106,174	107,213	107,071	107,941
South Asia	39,296	40,030	45,630	52,091	52,198	52,796
Southeast Asia	16,968	18,549	17,275	17,263	15,318	15,088
Oceania	240	196	252	224	117	117
<b>Total</b>	<b>184,828</b>	<b>180,906</b>	<b>180,161</b>	<b>191,221</b>	<b>188,831</b>	<b>190,344</b>

NOTES: Regional definitions appear on last page of this circular. Imports are reported on a trade year basis. All other data are reported using local marketing years.

**World Coarse Grain Trade**  
**October/September Year, Thousand Metric Tons**

	2021/22	2022/23	2023/24	2024/25	2025/26 Dec	2025/26 Jan
<b>TY Exports</b>						
Brazil	31,938	52,999	46,513	38,966	41,085	41,085
Argentina	44,419	29,448	35,158	38,710	37,700	37,700
Ukraine	29,895	29,765	32,727	21,902	25,780	25,780
Australia	11,109	10,500	10,345	11,364	11,475	11,475
European Union	12,812	11,054	11,426	10,266	9,440	9,440
Russia	7,375	11,515	12,865	6,870	7,005	7,030
Canada	5,552	7,863	6,296	6,749	6,290	6,290
Paraguay	3,208	4,006	2,927	3,284	3,235	3,315
Burma	2,300	2,000	3,000	2,400	2,700	2,700
South Africa	3,841	3,626	2,490	2,021	2,120	2,120
Others	14,038	12,655	13,363	11,136	9,077	9,183
<b>Subtotal</b>	166,487	175,431	177,110	153,668	155,907	156,118
<b>United States</b>	70,394	45,830	64,673	77,796	85,585	85,585
<b>World Total</b>	236,881	221,261	241,783	231,464	241,492	241,703
<b>TY Imports</b>						
Mexico	18,498	20,230	24,931	27,050	27,100	27,100
China	41,499	32,602	48,030	18,240	26,725	26,750
European Union	21,353	25,639	21,683	20,125	21,230	21,230
Japan	16,506	16,451	16,672	16,717	17,010	17,010
Vietnam	9,653	10,122	11,597	12,929	13,300	13,300
Iran	10,302	8,000	9,900	12,800	12,100	12,200
Korea, South	11,617	11,227	11,667	11,564	11,608	11,608
Egypt	9,771	6,238	8,041	10,604	10,520	10,520
Saudi Arabia	8,778	6,394	7,596	8,343	8,470	8,470
Colombia	6,846	6,697	6,951	7,848	8,350	8,350
Algeria	3,965	4,249	5,859	5,196	5,555	5,555
Taiwan	4,644	4,269	4,666	4,422	4,630	4,630
Peru	3,646	3,495	4,455	4,631	4,450	4,450
Turkey	5,861	4,360	3,435	5,963	4,406	4,406
Malaysia	3,697	3,476	3,886	4,113	3,828	3,828
Morocco	2,724	2,979	4,201	3,719	3,606	3,606
United Kingdom	2,637	2,166	3,027	3,204	3,035	3,035
Chile	2,564	2,430	2,619	2,599	2,760	2,760
Brazil	4,064	2,353	2,264	3,116	2,520	2,600
Canada	6,341	2,278	2,897	1,867	2,115	2,115
Philippines	1,126	1,340	1,889	1,391	2,055	2,055
Guatemala	1,574	1,618	1,894	1,966	1,900	1,900
Thailand	1,568	1,965	2,079	1,628	1,850	1,850
Libya	1,395	1,800	1,450	2,320	1,800	1,800
Dominican Republic	1,354	1,386	1,665	1,650	1,650	1,650
Others	26,927	24,694	28,505	31,309	27,707	27,713
<b>Subtotal</b>	228,910	208,458	241,859	225,314	230,280	230,491
<b>Unaccounted</b>	5,319	9,449	-2,403	3,944	8,912	8,912
<b>United States</b>	2,652	3,354	2,327	2,206	2,300	2,300
<b>World Total</b>	236,881	221,261	241,783	231,464	241,492	241,703

TY=Trade Year, see Endnotes.

# World Coarse Grains Production, Consumption, and Stocks

Local Marketing Years, Thousand Metric Tons

	2021/22	2022/23	2023/24	2024/25	2025/26 Dec	2025/26 Jan
<b>Production</b>						
China	281,729	285,894	297,382	303,467	303,950	310,190
European Union	155,030	133,099	137,039	136,801	141,110	141,110
Brazil	120,699	143,489	124,808	143,586	137,614	137,614
India	51,385	56,776	57,155	61,550	62,060	62,060
Argentina	61,142	43,914	59,373	58,455	61,821	61,821
Russia	38,538	44,132	42,540	34,775	37,475	39,050
Ukraine	53,514	33,925	39,780	33,470	35,582	35,582
Mexico	32,790	33,943	29,087	28,370	31,190	31,190
Canada	25,124	30,535	27,524	27,521	29,479	29,479
Australia	19,219	18,842	14,484	17,695	19,919	19,919
Nigeria	21,397	21,696	19,004	19,180	19,490	19,490
Ethiopia	18,215	17,466	17,560	17,910	17,985	17,985
South Africa	16,636	17,527	13,944	17,623	17,053	17,053
Turkey	11,477	14,839	17,045	14,760	14,650	14,650
Indonesia	12,700	12,400	12,700	13,100	13,000	13,000
Others	189,865	193,336	194,756	191,719	192,636	192,585
<b>Subtotal</b>	<b>1,109,460</b>	<b>1,101,813</b>	<b>1,104,181</b>	<b>1,119,982</b>	<b>1,135,014</b>	<b>1,142,778</b>
<b>United States</b>	<b>396,297</b>	<b>356,449</b>	<b>402,882</b>	<b>391,513</b>	<b>440,801</b>	<b>447,832</b>
<b>World Total</b>	<b>1,505,757</b>	<b>1,458,262</b>	<b>1,507,063</b>	<b>1,511,495</b>	<b>1,575,815</b>	<b>1,590,610</b>
<b>Domestic Consumption</b>						
China	320,911	321,768	338,700	342,075	348,875	348,900
European Union	158,273	149,602	148,705	148,716	151,841	151,841
Brazil	76,661	84,987	90,632	102,929	104,129	104,204
India	48,046	53,703	57,311	61,867	63,500	63,500
Mexico	51,065	52,395	53,170	55,275	57,480	57,480
Russia	31,109	33,150	29,990	28,400	30,175	31,300
Canada	25,792	24,500	24,353	22,902	24,574	24,574
Argentina	19,344	17,630	18,326	20,577	20,326	20,626
Nigeria	21,177	21,591	20,249	19,746	19,675	19,675
Turkey	17,609	17,954	16,909	20,165	18,750	18,650
Ethiopia	18,392	17,632	17,860	18,180	18,225	18,225
Egypt	17,891	14,556	16,199	18,188	18,010	18,010
Japan	16,822	16,802	16,923	16,836	17,261	17,261
Vietnam	15,300	14,472	14,650	15,979	16,750	16,750
Iran	14,720	13,520	14,220	16,570	16,370	16,470
Others	290,089	286,597	294,067	301,997	302,918	302,726
<b>Subtotal</b>	<b>1,166,878</b>	<b>1,147,870</b>	<b>1,165,844</b>	<b>1,211,383</b>	<b>1,244,924</b>	<b>1,246,567</b>
<b>United States</b>	<b>324,909</b>	<b>314,970</b>	<b>331,424</b>	<b>323,902</b>	<b>343,187</b>	<b>345,618</b>
<b>World Total</b>	<b>1,491,787</b>	<b>1,462,840</b>	<b>1,497,268</b>	<b>1,535,285</b>	<b>1,588,111</b>	<b>1,592,185</b>
<b>Ending Stocks</b>						
China	210,035	206,753	213,460	193,086	174,861	181,101
European Union	18,652	16,531	15,405	14,498	15,228	15,307
Mexico	3,907	5,608	6,447	6,542	7,091	7,321
Argentina	5,582	3,134	3,613	7,274	6,596	6,574
Brazil	4,344	10,605	9,067	11,416	4,209	4,341
Canada	3,706	3,945	3,909	3,483	4,213	4,213
India	3,387	3,589	3,906	3,498	2,451	2,448
Others	54,937	50,146	43,563	41,288	40,544	40,910
<b>Subtotal</b>	<b>304,550</b>	<b>300,311</b>	<b>299,370</b>	<b>281,085</b>	<b>255,193</b>	<b>262,215</b>
<b>United States</b>	<b>37,475</b>	<b>37,136</b>	<b>47,872</b>	<b>42,367</b>	<b>54,569</b>	<b>59,662</b>
<b>World Total</b>	<b>342,025</b>	<b>337,447</b>	<b>347,242</b>	<b>323,452</b>	<b>309,762</b>	<b>321,877</b>

# Regional Coarse Grains Imports, Production, Consumption, and Stocks

Thousand Metric Tons

	2021/22	2022/23	2023/24	2024/25	Dec 2025/26	Jan 2025/26
<b>TY Imports</b>						
North America	27,491	25,862	30,155	31,123	31,515	31,515
Central America	5,333	5,463	5,603	6,179	5,925	5,925
Caribbean	2,151	2,009	2,234	2,128	2,176	2,176
South America	18,716	16,918	18,262	19,867	20,308	20,388
European Union	21,353	25,639	21,683	20,125	21,230	21,230
Former Soviet Union - 12	823	1,316	1,105	962	850	851
Middle East	33,453	26,378	29,512	36,632	33,622	33,722
North Africa	19,650	16,853	21,212	23,462	23,081	23,081
Sub-Saharan Africa	3,974	3,727	5,306	7,735	4,515	4,520
East Asia	74,316	64,596	81,080	50,988	60,018	60,043
Southeast Asia	17,339	17,977	21,402	21,506	22,344	22,344
Others	6,963	5,074	6,632	6,813	6,996	6,996
<b>Total</b>	<b>231,562</b>	<b>211,812</b>	<b>244,186</b>	<b>227,520</b>	<b>232,580</b>	<b>232,791</b>
<b>Production</b>						
North America	454,211	420,927	459,493	447,404	501,470	508,501
South America	199,184	203,038	200,600	220,675	217,131	217,131
European Union	155,030	133,099	137,039	136,801	141,110	141,110
Other Europe	18,070	16,675	18,395	17,217	14,685	14,685
Former Soviet Union - 12	106,378	91,684	95,804	83,352	88,126	89,655
Middle East	17,922	21,561	24,646	23,705	21,920	21,920
North Africa	12,704	11,160	10,812	10,299	10,702	10,702
Sub-Saharan Africa	127,796	135,385	127,749	127,435	131,016	131,016
East Asia	284,547	288,704	300,194	306,236	306,767	313,002
South Asia	70,084	77,239	77,041	79,843	82,165	82,165
Southeast Asia	35,481	34,914	35,944	35,780	35,750	35,750
Oceania	19,778	19,393	15,065	18,318	20,519	20,519
Others	4,572	4,483	4,281	4,430	4,454	4,454
<b>Total</b>	<b>1,505,757</b>	<b>1,458,262</b>	<b>1,507,063</b>	<b>1,511,495</b>	<b>1,575,815</b>	<b>1,590,610</b>
<b>Domestic Consumption</b>						
North America	401,766	391,865	408,947	402,079	425,241	427,672
South America	123,034	129,559	139,113	154,665	156,479	156,814
European Union	158,273	149,602	148,705	148,716	151,841	151,841
Other Europe	18,928	17,808	18,472	19,009	18,058	17,908
Former Soviet Union - 12	57,731	55,120	52,789	52,797	53,620	54,743
Middle East	52,667	48,659	49,947	58,197	55,806	55,806
North Africa	31,904	27,282	31,700	34,445	33,896	33,896
Sub-Saharan Africa	126,327	133,767	131,214	130,751	132,265	132,265
East Asia	356,652	356,945	374,430	377,624	385,041	385,066
South Asia	69,023	75,451	77,286	82,314	85,112	85,112
Southeast Asia	51,526	49,699	51,431	53,768	54,028	54,028
Oceania	8,394	8,207	7,594	7,477	8,019	8,019
Others	11,885	11,865	12,060	12,462	12,640	12,640
<b>Total</b>	<b>1,468,110</b>	<b>1,455,829</b>	<b>1,503,688</b>	<b>1,534,304</b>	<b>1,572,046</b>	<b>1,575,810</b>
<b>Ending Stocks</b>						
North America	45,088	46,689	58,228	52,392	65,873	71,196
South America	13,112	16,434	14,999	21,040	13,059	13,167
European Union	18,652	16,531	15,405	14,498	15,228	15,307
Other Europe	2,655	2,412	2,580	2,717	2,167	2,162
Former Soviet Union - 12	12,324	7,827	4,643	4,283	4,845	5,062
Middle East	5,209	5,743	6,831	6,106	5,353	5,382
North Africa	3,229	2,945	3,183	2,796	2,830	2,852
Sub-Saharan Africa	13,567	13,313	11,478	11,721	11,132	11,137
East Asia	214,318	210,662	217,502	197,096	178,814	185,050
South Asia	5,371	6,329	5,908	4,904	3,984	3,981
Southeast Asia	3,790	3,581	3,585	3,277	3,125	3,127
Oceania	3,721	4,043	1,899	1,474	2,247	2,357
Others	989	938	1,001	1,148	1,105	1,097
<b>Total</b>	<b>342,025</b>	<b>337,447</b>	<b>347,242</b>	<b>323,452</b>	<b>309,762</b>	<b>321,877</b>

NOTES: Regional definitions appear on last page of this circular. Imports are reported on a trade year basis. All other data are reported using local marketing years.

**World Corn Trade**  
**October/September Year, Thousand Metric Tons**

	2021/22	2022/23	2023/24	2024/25	2025/26 Dec	2025/26 Jan
<b>TY Exports</b>						
Brazil	31,921	52,977	46,416	38,839	41,000	41,000
Argentina	38,854	25,740	31,214	34,024	33,000	33,000
Ukraine	26,980	27,122	29,488	20,019	23,000	23,000
Paraguay	3,187	3,968	2,864	3,131	3,200	3,200
Russia	4,000	5,900	6,600	3,000	3,000	3,000
Burma	2,300	2,000	3,000	2,400	2,700	2,700
Canada	2,200	2,851	2,239	2,885	2,200	2,200
South Africa	3,830	3,619	2,464	1,994	2,100	2,100
European Union	6,027	4,198	4,389	2,761	1,800	1,800
Tanzania	820	280	400	1,100	800	800
Others	10,544	9,228	9,863	5,594	5,117	5,122
<b>Subtotal</b>	130,663	137,883	138,937	115,747	117,917	117,922
<b>United States</b>	62,903	42,774	58,520	75,246	80,000	80,000
<b>World Total</b>	193,566	180,657	197,457	190,993	197,917	197,922
<b>TY Imports</b>						
Mexico	17,584	19,325	24,222	25,930	25,800	25,800
European Union	19,521	23,188	19,812	18,757	20,000	20,000
Japan	15,003	14,927	15,290	15,456	15,500	15,500
Vietnam	9,100	9,500	11,300	12,700	13,000	13,000
Korea, South	11,510	11,099	11,550	11,442	11,500	11,500
Egypt	9,763	6,215	8,019	10,564	10,500	10,500
Iran	8,600	6,700	8,500	9,800	9,500	9,500
China	21,884	18,694	23,330	1,823	8,000	8,000
Colombia	6,512	6,343	6,622	7,463	8,000	8,000
Algeria	3,273	4,069	4,956	4,724	4,950	4,950
Taiwan	4,553	4,193	4,590	4,348	4,550	4,550
Saudi Arabia	4,071	3,289	4,989	4,436	4,500	4,500
Peru	3,514	3,324	4,288	4,482	4,300	4,300
Malaysia	3,678	3,448	3,870	4,089	3,800	3,800
Turkey	3,782	2,388	3,307	5,587	3,400	3,400
Morocco	1,963	2,244	2,736	3,048	2,900	2,900
United Kingdom	2,521	2,036	2,761	2,921	2,800	2,800
Chile	2,497	2,344	2,586	2,597	2,700	2,700
Canada	6,108	2,219	2,753	1,683	2,000	2,000
Guatemala	1,574	1,618	1,894	1,966	1,900	1,900
Philippines	669	1,024	1,784	1,340	1,900	1,900
Dominican Republic	1,354	1,386	1,665	1,650	1,650	1,650
Thailand	1,480	1,346	2,018	1,461	1,650	1,650
Brazil	3,316	1,684	1,449	1,966	1,600	1,600
Venezuela	1,100	1,000	1,400	1,150	1,600	1,600
Others	21,222	18,629	22,770	25,102	21,623	21,628
<b>Subtotal</b>	186,152	172,232	198,461	186,485	189,623	189,628
<b>Unaccounted</b>	6,807	7,404	-1,710	3,988	7,644	7,644
<b>United States</b>	607	1,021	706	520	650	650
<b>World Total</b>	193,566	180,657	197,457	190,993	197,917	197,922

TY=Trade Year, see Endnotes.

# World Corn Production, Consumption, and Stocks

Local Marketing Years, Thousand Metric Tons

	2021/22	2022/23	2023/24	2024/25	2025/26 Dec	2025/26 Jan
<b>Production</b>						
China	272,552	277,200	288,842	294,917	295,000	301,240
Brazil	116,000	137,000	119,000	136,000	131,000	131,000
European Union	71,672	52,379	61,947	59,024	56,750	56,750
Argentina	52,000	37,000	51,000	50,000	53,000	53,000
India	33,730	38,085	37,665	42,281	43,000	43,000
Ukraine	42,126	27,000	32,500	26,800	29,000	29,000
Mexico	26,762	28,077	23,710	23,200	26,000	26,000
South Africa	16,137	17,100	13,425	17,060	16,500	16,500
Canada	14,611	14,539	15,421	15,345	14,867	14,867
Russia	15,225	15,832	16,600	14,000	14,500	14,500
Indonesia	12,700	12,400	12,700	13,100	13,000	13,000
Nigeria	12,745	12,949	11,053	11,217	11,440	11,440
Ethiopia	10,751	10,200	10,000	10,200	10,300	10,300
Pakistan	9,525	10,985	9,847	8,239	9,800	9,800
Philippines	8,344	8,322	8,119	8,331	8,270	8,270
Others	124,701	119,911	129,211	122,881	125,010	125,005
<b>Subtotal</b>	839,581	818,979	841,040	852,595	857,437	863,672
<b>United States</b>	381,469	346,739	389,667	378,268	425,525	432,342
<b>World Total</b>	1,221,050	1,165,718	1,230,707	1,230,863	1,282,962	1,296,014
<b>Total Consumption</b>						
China	291,000	299,000	307,000	316,000	321,000	321,000
Brazil	71,500	78,000	84,000	94,500	96,500	96,500
European Union	81,700	74,700	78,100	76,100	75,300	75,300
Mexico	44,300	45,600	47,000	49,000	51,000	51,000
India	30,000	34,700	37,900	42,500	44,000	44,000
Egypt	17,000	13,700	15,300	17,300	17,100	17,100
Argentina	15,700	14,200	14,600	16,400	16,400	16,700
Vietnam	14,750	13,850	14,350	15,750	16,450	16,450
Japan	15,040	15,000	15,300	15,400	15,500	15,500
Canada	17,984	14,897	15,718	14,420	14,600	14,600
Indonesia	13,800	13,400	14,100	14,800	14,200	14,200
South Africa	12,655	13,239	13,840	14,000	14,200	14,200
Nigeria	12,600	12,900	12,300	11,800	11,700	11,700
Korea, South	11,560	11,350	11,500	11,550	11,600	11,600
Russia	11,100	10,000	10,200	10,900	11,400	11,400
Others	205,964	197,034	211,535	219,026	219,250	219,135
<b>Subtotal</b>	888,624	868,543	897,774	939,987	964,933	965,268
<b>United States</b>	315,665	305,931	322,873	311,603	332,247	334,533
<b>World Total</b>	1,204,289	1,174,474	1,220,647	1,251,590	1,297,180	1,299,801
<b>Ending Stocks</b>						
China	209,137	206,023	211,192	191,928	173,908	180,148
Mexico	3,125	4,877	5,786	5,891	6,431	6,661
Argentina	4,748	2,323	2,476	6,581	5,886	5,886
European Union	11,355	8,024	7,294	6,214	5,785	5,864
Brazil	3,742	9,877	8,334	10,584	3,534	3,684
Korea, South	2,056	1,898	2,042	2,028	2,022	2,022
South Africa	1,954	2,405	654	1,914	2,014	2,014
Others	43,027	35,385	32,853	30,152	28,037	28,066
<b>Subtotal</b>	279,144	270,812	270,631	255,292	227,617	234,345
<b>United States</b>	34,975	34,551	44,792	39,404	51,534	56,564
<b>World Total</b>	314,119	305,363	315,423	294,696	279,151	290,909

# Regional Corn Imports, Production, Consumption, and Stocks

Thousand Metric Tons

	2021/22	2022/23	2023/24	2024/25	Dec 2025/26	Jan 2025/26
<b>TY Imports</b>						
North America	24,299	22,565	27,681	28,133	28,450	28,450
Central America	5,333	5,463	5,603	6,179	5,925	5,925
South America	17,371	15,503	16,849	18,085	18,755	18,755
European Union	19,521	23,188	19,812	18,757	20,000	20,000
Former Soviet Union - 12	430	472	398	391	356	356
Middle East	21,814	17,136	23,054	26,314	22,975	22,975
North Africa	16,809	14,149	17,421	20,279	20,200	20,200
Sub-Saharan Africa	3,395	2,974	4,470	6,578	3,907	3,912
East Asia	53,000	48,960	54,805	33,114	39,595	39,595
Southeast Asia	16,222	16,392	20,923	21,035	21,661	21,661
Caribbean	2,147	2,008	2,232	2,125	2,175	2,175
Others	6,418	4,443	5,919	6,015	6,274	6,274
<b>Total</b>	<b>186,759</b>	<b>173,253</b>	<b>199,167</b>	<b>187,005</b>	<b>190,273</b>	<b>190,278</b>
<b>Production</b>						
North America	422,842	389,355	428,798	416,813	466,392	473,209
South America	182,556	186,830	182,569	200,987	198,690	198,690
European Union	71,672	52,379	61,947	59,024	56,750	56,750
Other Europe	7,591	5,875	8,224	6,778	4,763	4,763
Former Soviet Union - 12	64,607	47,907	55,188	46,878	49,825	49,825
Middle East	8,753	9,461	10,904	9,674	10,484	10,484
North Africa	7,507	7,487	7,262	7,072	6,767	6,767
Sub-Saharan Africa	88,756	89,623	87,454	86,118	89,195	89,195
East Asia	275,026	279,702	291,349	297,428	297,515	303,750
South Asia	51,615	57,671	56,723	59,784	62,306	62,306
Central America	3,659	3,665	3,530	3,614	3,627	3,627
Southeast Asia	35,191	34,624	35,654	35,490	35,460	35,460
Others	1,275	1,139	1,105	1,203	1,188	1,188
<b>Total</b>	<b>1,221,050</b>	<b>1,165,718</b>	<b>1,230,707</b>	<b>1,230,863</b>	<b>1,282,962</b>	<b>1,296,014</b>
<b>Domestic Consumption</b>						
North America	377,949	366,428	385,591	375,023	397,847	400,133
South America	111,065	115,868	124,739	138,337	141,480	141,780
European Union	81,700	74,700	78,100	76,100	75,300	75,300
Other Europe	9,049	8,469	8,671	9,106	8,325	8,175
Former Soviet Union - 12	25,428	19,960	21,255	23,495	23,500	23,535
Middle East	30,112	25,809	31,675	35,139	33,390	33,390
North Africa	23,910	20,995	24,720	27,270	26,900	26,900
Sub-Saharan Africa	86,070	87,645	90,027	88,745	89,739	89,739
East Asia	324,650	332,096	340,846	349,845	355,145	355,145
South Asia	50,133	55,543	57,031	62,147	64,795	64,795
Southeast Asia	50,059	47,863	50,606	53,011	53,056	53,056
Central America	8,785	9,015	9,145	9,540	9,615	9,615
Others	3,408	3,110	3,210	3,291	3,355	3,355
<b>Total</b>	<b>1,182,318</b>	<b>1,167,501</b>	<b>1,225,616</b>	<b>1,251,049</b>	<b>1,282,447</b>	<b>1,284,918</b>
<b>Ending Stocks</b>						
North America	40,846	41,056	52,574	46,879	59,616	64,876
South America	11,292	14,437	12,687	18,930	11,145	11,293
European Union	11,355	8,024	7,294	6,214	5,785	5,864
Other Europe	1,324	762	1,088	1,008	632	626
Former Soviet Union - 12	9,666	4,542	2,151	2,510	2,632	2,626
Middle East	3,043	3,039	2,973	3,195	2,650	2,679
North Africa	2,012	2,161	2,141	2,084	2,128	2,150
Sub-Saharan Africa	12,150	11,607	9,977	9,946	9,603	9,608
East Asia	213,206	209,763	215,069	195,762	177,706	183,942
South Asia	4,366	5,388	4,813	3,674	2,957	2,954
Southeast Asia	3,781	3,572	3,579	3,271	3,119	3,121
Central America	837	808	807	936	920	912
Others	241	204	270	287	258	258
<b>Total</b>	<b>314,119</b>	<b>305,363</b>	<b>315,423</b>	<b>294,696</b>	<b>279,151</b>	<b>290,909</b>

NOTES: Regional definitions appear on last page of this circular. Imports are reported on a trade year basis. All other data are reported using local marketing years.

**World Barley Trade**  
**October/September Year, Thousand Metric Tons**

	2021/22	2022/23	2023/24	2024/25	2025/26 Dec	2025/26 Jan
<b>TY Exports</b>						
Australia	8,233	7,084	7,909	8,246	8,200	8,200
European Union	6,355	6,614	6,695	7,346	7,400	7,400
Russia	3,100	5,400	5,800	3,500	3,700	3,700
Argentina	3,765	2,908	2,843	3,386	3,300	3,300
Ukraine	2,710	2,559	3,176	1,805	2,700	2,700
Canada	1,973	2,899	2,470	2,113	2,400	2,400
Kazakhstan	563	1,253	1,399	1,914	1,700	1,700
United Kingdom	785	1,061	654	715	600	600
Uruguay	317	127	350	189	250	250
Turkey	215	121	149	1,170	100	200
Others	403	308	353	285	313	314
<b>Subtotal</b>	28,419	30,334	31,798	30,669	30,663	30,764
<b>United States</b>	68	57	152	216	150	150
<b>World Total</b>	28,487	30,391	31,950	30,885	30,813	30,914
<b>TY Imports</b>						
China	8,282	8,582	15,898	10,252	10,500	10,500
Saudi Arabia	4,700	3,100	2,600	3,900	3,900	3,900
Iran	1,700	1,300	1,400	3,000	2,600	2,700
Japan	1,184	1,228	1,203	1,138	1,250	1,250
Libya	535	1,000	700	1,400	1,000	1,000
Turkey	2,036	1,967	127	371	1,000	1,000
Brazil	734	652	759	1,009	900	900
European Union	1,237	2,157	1,590	1,026	900	900
Jordan	1,166	1,261	847	915	800	800
Morocco	760	734	1,462	661	700	700
Algeria	688	180	900	470	600	600
Tunisia	845	766	701	600	550	550
Iraq	141	59	150	573	500	500
Mexico	363	544	471	420	500	500
Qatar	292	394	287	115	450	450
Kuwait	551	410	300	300	400	400
Colombia	333	353	329	385	350	350
United Arab Emirates	337	260	320	300	300	300
Vietnam	553	622	297	229	300	300
India	101	253	99	167	200	200
Others	2,304	2,903	2,221	2,633	2,250	2,250
<b>Subtotal</b>	28,842	28,725	32,661	29,864	29,950	30,050
<b>Unaccounted</b>	-813	1,208	-925	820	663	664
<b>United States</b>	458	458	214	201	200	200
<b>World Total</b>	28,487	30,391	31,950	30,885	30,813	30,914

TY=Trade Year, see Endnotes.

**World Barley Production, Consumption, and Stocks**  
**Local Marketing Years, Thousand Metric Tons**

	2021/22	2022/23	2023/24	2024/25	2025/26 Dec	2025/26 Jan
<b>Production</b>						
European Union	52,065	51,829	47,903	50,285	56,000	56,000
Russia	17,505	21,500	20,500	16,250	18,600	19,400
Australia	14,337	14,137	10,800	13,265	15,500	15,500
Canada	6,984	9,987	8,905	8,144	9,725	9,725
United Kingdom	6,961	7,385	6,963	7,091	6,450	6,450
Turkey	4,500	7,400	8,000	7,000	6,100	6,100
Ukraine	9,923	6,100	6,350	5,800	5,900	5,900
Argentina	5,300	4,695	5,100	4,824	5,100	5,100
Kazakhstan	2,367	3,287	2,614	3,840	3,700	3,700
Iran	2,700	3,000	3,000	3,100	3,000	3,000
Ethiopia	2,072	2,184	2,450	2,485	2,485	2,485
China	2,134	2,192	2,000	2,000	2,300	2,300
India	1,656	1,371	1,913	1,699	1,860	1,860
Algeria	950	1,400	1,025	1,200	1,350	1,350
Belarus	1,077	1,500	1,150	1,100	1,250	1,250
Others	11,853	9,685	10,796	12,074	10,557	10,557
<b>Subtotal</b>	142,384	147,652	139,469	140,157	149,877	150,677
<b>United States</b>	2,626	3,787	4,052	3,145	3,067	3,067
<b>World Total</b>	145,010	151,439	143,521	143,302	152,944	153,744
<b>Total Consumption</b>						
European Union	45,450	46,700	43,200	45,000	48,300	48,300
Russia	14,300	16,700	14,700	13,300	14,700	15,100
China	11,600	11,000	16,400	13,400	12,900	12,900
Turkey	7,400	8,700	6,900	7,400	7,300	7,200
Canada	5,399	6,698	6,269	6,114	7,000	7,000
United Kingdom	6,380	6,046	6,490	6,501	6,225	6,225
Australia	6,000	6,000	5,600	5,400	6,000	6,000
Iran	4,700	5,300	4,300	5,300	5,200	5,300
Saudi Arabia	4,225	4,325	2,025	4,025	3,825	3,825
Ukraine	4,100	3,450	3,900	3,800	3,500	3,500
Ethiopia	2,100	2,200	2,510	2,500	2,525	2,525
India	1,700	1,600	1,880	1,950	2,100	2,100
Algeria	1,950	1,400	1,850	1,780	1,980	1,980
Kazakhstan	2,300	2,450	1,900	1,800	1,900	1,900
Morocco	3,120	1,586	2,350	2,000	1,800	1,800
Others	21,230	21,413	20,062	22,045	21,915	21,899
<b>Subtotal</b>	144,336	145,501	138,441	143,223	147,793	148,378
<b>United States</b>	3,532	3,628	3,963	3,345	3,157	3,048
<b>World Total</b>	147,868	149,129	142,404	146,568	150,950	151,426
<b>Ending Stocks</b>						
European Union	5,287	5,726	5,599	5,906	6,806	6,806
Australia	2,848	3,220	1,318	882	1,782	1,782
Canada	543	709	1,152	1,249	1,674	1,674
United Kingdom	964	1,268	1,163	1,279	1,104	1,104
Russia	712	1,062	712	312	762	962
Saudi Arabia	991	980	967	954	941	941
Turkey	306	922	2,087	687	687	687
Others	6,083	5,533	7,269	5,923	5,555	5,535
<b>Subtotal</b>	17,734	19,420	20,267	17,192	19,311	19,491
<b>United States</b>	809	1,433	1,703	1,512	1,423	1,531
<b>World Total</b>	18,543	20,853	21,970	18,704	20,734	21,022

# Regional Barley Imports, Production, Consumption, and Stocks

Thousand Metric Tons

	2021/22	2022/23	2023/24	2024/25	Dec 2025/26	Jan 2025/26
<b>TY Imports</b>						
North America	1,025	1,038	808	791	800	800
South America	1,261	1,209	1,244	1,584	1,425	1,425
European Union	1,237	2,157	1,590	1,026	900	900
Other Europe	198	171	406	415	296	296
Former Soviet Union - 12	381	819	668	519	475	475
Middle East	11,506	9,207	6,426	10,289	10,545	10,645
North Africa	2,835	2,702	3,783	3,171	2,870	2,870
Sub-Saharan Africa	61	109	170	167	110	110
East Asia	9,576	9,936	17,215	11,500	11,855	11,855
South Asia	109	280	117	175	214	214
Oceania	45	19	5	8	30	30
<b>Total</b>	29,300	29,183	32,875	30,065	30,150	30,250
<b>Production</b>						
North America	10,705	14,635	13,734	12,179	13,602	13,602
South America	7,042	6,528	6,865	6,907	6,862	6,862
European Union	52,065	51,829	47,903	50,285	56,000	56,000
Other Europe	8,531	8,961	8,498	8,674	8,087	8,087
Former Soviet Union - 12	32,888	34,600	32,784	29,390	31,710	32,510
Middle East	7,938	10,925	12,569	12,813	10,213	10,213
North Africa	4,348	2,809	2,655	2,322	3,040	3,040
Sub-Saharan Africa	2,559	2,646	2,987	3,017	2,995	2,995
East Asia	2,474	2,494	2,302	2,255	2,599	2,599
South Asia	1,798	1,545	2,066	1,839	2,006	2,006
Oceania	14,662	14,467	11,158	13,621	15,830	15,830
<b>Total</b>	145,010	151,439	143,521	143,302	152,944	153,744
<b>Domestic Consumption</b>						
North America	10,431	11,726	11,582	10,759	11,457	11,348
South America	4,195	4,590	4,663	4,982	4,741	4,716
European Union	45,450	46,700	43,200	45,000	48,300	48,300
Other Europe	7,930	7,580	8,053	8,123	7,852	7,852
Former Soviet Union - 12	23,860	26,422	24,070	22,539	23,825	24,234
Middle East	21,209	21,628	17,056	21,811	21,097	21,097
North Africa	7,146	5,412	6,079	6,268	6,090	6,090
Sub-Saharan Africa	2,638	2,793	3,069	3,018	3,151	3,151
East Asia	13,278	12,701	18,010	14,895	14,575	14,575
South Asia	1,868	1,797	2,045	2,092	2,259	2,259
Oceania	6,350	6,355	5,970	5,755	6,350	6,350
<b>Total</b>	145,486	149,196	144,299	145,660	150,327	150,602
<b>Ending Stocks</b>						
North America	1,815	2,589	3,230	3,094	3,440	3,548
South America	902	1,001	1,198	993	947	929
European Union	5,287	5,726	5,599	5,906	6,806	6,806
Other Europe	1,125	1,453	1,338	1,503	1,326	1,326
Former Soviet Union - 12	2,050	2,559	1,912	1,289	1,829	2,027
Middle East	2,133	2,682	3,851	2,909	2,695	2,695
North Africa	1,197	774	1,030	690	680	680
Sub-Saharan Africa	385	324	364	483	403	403
East Asia	614	343	1,850	710	589	589
South Asia	128	131	241	195	192	192
Oceania	2,898	3,262	1,351	926	1,821	1,821
<b>Total</b>	18,543	20,853	21,970	18,704	20,734	21,022

NOTES: Regional definitions appear on last page of this circular. Imports are reported on a trade year basis. All other data are reported using local marketing years.

**World Sorghum Trade**  
**October/September Year, Thousand Metric Tons**

	2021/22	2022/23	2023/24	2024/25	2025/26 Dec	2025/26 Jan
<b>TY Exports</b>						
Australia	2,267	2,753	2,060	2,500	2,600	2,600
Argentina	1,800	800	1,100	1,300	1,400	1,400
Paraguay	21	38	63	153	35	115
Brazil	10	1	93	121	75	75
India	41	37	33	41	50	50
Nigeria	50	50	50	50	50	50
Ukraine	72	66	36	37	45	45
Others	170	85	86	88	102	102
<b>Subtotal</b>	4,431	3,830	3,521	4,290	4,357	4,437
<b>United States</b>	7,387	2,965	5,964	2,295	5,400	5,400
<b>World Total</b>	11,818	6,795	9,485	6,585	9,757	9,837
<b>TY Imports</b>						
China	10,991	4,863	8,341	5,531	7,600	7,600
Mexico	362	176	60	525	600	600
European Union	167	38	16	259	200	200
Japan	258	241	127	73	200	200
Brazil	14	17	55	140	20	100
Kenya	79	152	24	151	75	75
Saudi Arabia	7	5	7	7	70	70
Eritrea	95	63	162	70	60	60
Ethiopia	12	35	14	275	50	50
Somalia	50	50	50	50	50	50
Others	495	448	524	547	378	378
<b>Subtotal</b>	12,530	6,088	9,380	7,628	9,303	9,383
<b>Unaccounted</b>	-712	707	104	-1,044	454	454
<b>United States</b>	0	0	1	1	0	0
<b>World Total</b>	11,818	6,795	9,485	6,585	9,757	9,837

TY=Trade Year, see Endnotes.

# World Sorghum Production, Consumption, and Stocks

Local Marketing Years, Thousand Metric Tons

	2021/22	2022/23	2023/24	2024/25	2025/26 Dec	2025/26 Jan
<b>Production</b>						
Nigeria	6,725	6,806	6,402	6,417	6,500	6,500
Brazil	3,120	4,789	4,426	6,102	4,900	4,900
India	4,150	3,814	4,737	6,000	4,600	4,600
Mexico	4,840	4,892	4,540	4,200	4,300	4,300
Ethiopia	4,450	4,140	4,010	4,100	4,100	4,100
Sudan	3,528	5,248	3,055	3,300	3,300	3,300
China	3,377	3,094	3,000	3,000	3,100	3,100
Argentina	2,883	1,610	2,487	2,853	3,000	3,000
Australia	2,648	2,638	2,215	2,685	2,500	2,500
Niger	1,207	2,100	1,700	1,900	1,907	1,907
Burkina Faso	1,644	2,014	1,772	1,900	1,900	1,900
Mali	1,248	1,603	1,528	1,640	1,500	1,500
Cameroon	1,200	1,200	1,200	1,200	1,200	1,200
Bolivia	595	886	1,771	1,000	1,000	1,000
Chad	896	967	878	720	950	950
Others	7,312	6,843	7,015	7,307	7,343	7,343
<b>Subtotal</b>	49,823	52,644	50,736	54,324	52,100	52,100
<b>United States</b>	11,375	4,770	8,071	8,734	10,882	11,096
<b>World Total</b>	61,198	57,414	58,807	63,058	62,982	63,196
<b>Total Consumption</b>						
China	14,300	7,900	11,300	8,500	10,800	10,800
Nigeria	6,650	6,750	6,400	6,400	6,425	6,425
Brazil	3,000	4,700	4,400	6,000	5,000	5,100
Mexico	5,000	5,100	4,600	4,700	4,900	4,900
India	4,450	3,900	4,600	5,750	4,750	4,750
Ethiopia	4,650	4,250	4,050	4,300	4,250	4,250
Sudan	3,700	5,200	3,250	3,350	3,350	3,350
Niger	1,400	2,000	1,800	1,850	1,950	1,950
Burkina Faso	1,650	1,950	1,800	1,900	1,900	1,900
Mali	1,400	1,550	1,500	1,600	1,600	1,600
Argentina	1,150	1,000	1,100	1,650	1,500	1,500
Cameroon	1,215	1,210	1,215	1,230	1,215	1,215
European Union	948	552	795	1,066	1,166	1,166
Bolivia	650	850	1,750	1,000	1,000	1,000
Chad	950	975	915	780	925	925
Others	7,394	7,131	7,060	6,931	7,136	7,096
<b>Subtotal</b>	57,719	55,101	56,910	56,278	58,486	58,506
<b>United States</b>	3,175	2,585	1,912	6,066	5,081	5,335
<b>World Total</b>	60,894	57,686	58,822	62,344	63,567	63,841
<b>Ending Stocks</b>						
Brazil	390	495	483	604	451	429
China	332	387	426	455	350	350
Mexico	303	270	269	293	292	292
India	258	135	239	450	250	250
Sudan	148	301	161	181	176	176
Argentina	221	181	269	172	172	172
Mali	144	197	225	265	165	165
Others	1,283	1,426	1,090	1,267	1,052	1,162
<b>Subtotal</b>	3,079	3,392	3,162	3,687	2,908	2,996
<b>United States</b>	1,201	616	831	1,020	1,103	1,066
<b>World Total</b>	4,280	4,008	3,993	4,707	4,011	4,062

# Regional Sorghum Imports, Production, Consumption, and Stocks

Thousand Metric Tons

	2021/22	2022/23	2023/24	2024/25	Dec 2025/26	Jan 2025/26
<b>TY Imports</b>						
North America	362	176	61	526	600	600
South America	31	40	76	147	33	113
European Union	167	38	16	259	200	200
Other Europe	19	13	12	12	15	15
Middle East	85	30	31	19	91	91
North Africa	1	2	3	10	1	1
Sub-Saharan Africa	518	605	634	957	478	478
East Asia	11,307	5,157	8,522	5,661	7,854	7,854
Southeast Asia	32	21	20	27	25	25
Others	8	6	6	11	6	6
<b>Total</b>	12,530	6,088	9,381	7,629	9,303	9,383
<b>Production</b>						
North America	16,215	9,662	12,611	12,934	15,182	15,396
Central America	206	212	157	157	162	162
Caribbean	71	66	61	61	67	67
South America	6,817	7,451	8,878	10,392	9,141	9,141
European Union	801	522	794	1,021	910	910
Middle East	664	469	468	498	513	513
North Africa	803	755	784	794	784	784
Sub-Saharan Africa	25,135	28,571	24,948	25,354	25,858	25,858
East Asia	3,379	3,098	3,002	3,002	3,102	3,102
South Asia	4,214	3,863	4,776	6,041	4,641	4,641
Southeast Asia	50	50	50	50	50	50
Oceania	2,648	2,638	2,215	2,685	2,500	2,500
Others	195	57	63	69	72	72
<b>Total</b>	61,198	57,414	58,807	63,058	62,982	63,196
<b>Domestic Consumption</b>						
North America	8,175	7,685	6,512	10,766	9,981	10,235
Central America	208	212	157	157	162	162
Caribbean	74	68	63	64	68	68
South America	4,999	6,687	7,399	8,887	7,711	7,771
European Union	948	552	795	1,066	1,166	1,166
Middle East	742	501	497	517	604	604
North Africa	789	766	785	794	785	785
Sub-Saharan Africa	26,262	28,753	25,731	26,008	26,392	26,392
East Asia	14,620	8,198	11,496	8,629	11,056	11,056
South Asia	4,518	3,954	4,643	5,799	4,796	4,796
Southeast Asia	77	76	67	75	74	74
Oceania	160	110	260	260	110	110
Others	110	41	42	51	43	43
<b>Total</b>	61,682	57,603	58,447	63,073	62,948	63,262
<b>Ending Stocks</b>						
North America	1,504	886	1,100	1,313	1,395	1,358
Central America	5	5	5	5	5	5
South America	731	832	929	948	788	766
European Union	18	15	21	76	55	55
Middle East	0	0	0	0	0	0
North Africa	20	10	12	22	22	22
Sub-Saharan Africa	1,009	1,351	1,101	1,257	1,086	1,086
East Asia	356	411	437	469	364	364
South Asia	258	135	239	450	250	250
Oceania	331	351	138	163	43	153
Others	48	12	11	4	3	3
<b>Total</b>	4,280	4,008	3,993	4,707	4,011	4,062

NOTES: Regional definitions appear on last page of this circular. Imports are reported on a trade year basis. All other data are reported using local marketing years.

**World Oats Trade**  
**October/September Year, Thousand Metric Tons**

	2021/22	2022/23	2023/24	2024/25	2025/26 Dec	2025/26 Jan
<b>TY Exports</b>						
Canada	1,222	1,891	1,430	1,596	1,500	1,500
Australia	512	574	300	522	600	600
Russia	150	150	275	300	275	300
European Union	202	90	118	85	125	125
United Kingdom	167	147	95	82	75	75
Ukraine	9	4	19	38	25	25
Kazakhstan	2	13	16	24	15	15
Others	67	41	20	22	19	19
<b>Subtotal</b>	2,331	2,910	2,273	2,669	2,634	2,659
<b>United States</b>	33	29	31	36	30	30
<b>World Total</b>	2,364	2,939	2,304	2,705	2,664	2,689
<b>TY Imports</b>						
China	342	463	461	634	625	650
Mexico	189	185	178	175	200	200
European Union	209	125	98	73	90	90
India	46	53	32	67	50	50
Japan	48	44	44	41	50	50
Switzerland	50	42	43	42	45	45
Chile	12	75	25	0	35	35
Peru	30	45	52	26	35	35
Malaysia	19	28	16	24	28	28
Korea, South	26	21	21	26	25	25
Norway	32	13	50	32	25	25
South Africa	0	39	32	33	20	20
Canada	28	21	17	13	15	15
United Kingdom	16	19	15	14	15	15
Uruguay	10	21	4	5	15	15
Others	26	47	40	43	40	40
<b>Subtotal</b>	1,083	1,241	1,128	1,248	1,313	1,338
<b>Unaccounted</b>	25	98	87	186	101	101
<b>United States</b>	1,256	1,600	1,089	1,271	1,250	1,250
<b>World Total</b>	2,364	2,939	2,304	2,705	2,664	2,689

TY=Trade Year, see Endnotes.

# World Oats Production, Consumption, and Stocks

Local Marketing Years, Thousand Metric Tons

	2021/22	2022/23	2023/24	2024/25	2025/26 Dec	2025/26 Jan
<b>Production</b>						
European Union	7,502	7,485	5,941	7,757	8,000	8,000
Canada	2,899	5,226	2,643	3,358	3,920	3,920
Russia	3,733	4,500	3,300	3,000	3,100	3,800
Australia	1,735	1,587	1,021	1,315	1,500	1,500
Brazil	1,143	1,190	984	1,042	1,200	1,200
United Kingdom	1,123	1,007	830	986	1,000	1,000
China	780	790	840	850	850	850
Argentina	725	429	565	556	525	525
Chile	578	333	458	475	450	450
Ukraine	478	380	430	460	360	360
Belarus	327	375	350	320	350	350
Turkey	276	365	325	340	350	350
Norway	269	291	300	300	300	300
Kazakhstan	182	229	150	330	200	200
Algeria	40	105	105	105	105	105
Others	433	384	331	382	429	383
<b>Subtotal</b>	22,223	24,676	18,573	21,576	22,639	23,293
<b>United States</b>	578	837	828	992	1,011	1,011
<b>World Total</b>	22,801	25,513	19,401	22,568	23,650	24,304
<b>Total Consumption</b>						
European Union	7,475	7,400	6,275	7,375	7,675	7,675
Russia	3,650	4,300	3,050	2,750	2,800	3,450
Canada	1,920	2,337	1,989	1,896	2,250	2,250
China	1,125	1,250	1,300	1,475	1,475	1,500
Brazil	1,125	1,175	975	1,050	1,175	1,175
United Kingdom	1,007	870	775	891	930	930
Australia	1,200	1,100	750	780	900	900
Argentina	710	450	555	555	530	530
Chile	570	420	455	475	520	520
Belarus	325	375	350	325	350	350
Turkey	280	370	325	345	350	350
Norway	295	300	355	325	330	330
Ukraine	465	405	415	430	325	325
Mexico	265	295	220	275	280	280
Kazakhstan	205	205	160	285	200	200
Others	650	710	615	718	748	702
<b>Subtotal</b>	21,377	21,962	18,579	20,199	20,887	21,515
<b>United States</b>	2,015	2,219	2,049	2,301	2,191	2,191
<b>World Total</b>	23,392	24,181	20,628	22,500	23,078	23,706
<b>Ending Stocks</b>						
European Union	424	596	253	608	898	898
Canada	333	1,503	670	507	692	692
Australia	395	348	326	302	302	302
China	140	143	144	153	153	153
United Kingdom	157	140	95	141	151	151
Russia	122	173	149	99	124	149
Brazil	78	73	81	66	82	81
Others	343	317	327	351	330	332
<b>Subtotal</b>	1,992	3,293	2,045	2,227	2,732	2,758
<b>United States</b>	474	505	526	412	487	479
<b>World Total</b>	2,466	3,798	2,571	2,639	3,219	3,237

# Regional Oats Imports, Production, Consumption, and Stocks

Thousand Metric Tons

	2021/22	2022/23	2023/24	2024/25	Dec 2025/26	Jan 2025/26
<b>TY Imports</b>						
North America	1,473	1,806	1,284	1,459	1,465	1,465
South America	53	166	93	51	95	95
European Union	209	125	98	73	90	90
Other Europe	104	80	118	94	93	93
Former Soviet Union - 12	7	11	12	10	6	6
Middle East	7	5	1	5	6	6
North Africa	5	0	5	2	10	10
Sub-Saharan Africa	0	39	32	33	20	20
East Asia	416	528	526	701	700	725
South Asia	46	53	32	67	50	50
Southeast Asia	19	28	16	24	28	28
Oceania	0	0	0	0	0	0
<b>Total</b>	<b>2,339</b>	<b>2,841</b>	<b>2,217</b>	<b>2,519</b>	<b>2,563</b>	<b>2,588</b>
<b>Production</b>						
North America	3,570	6,176	3,531	4,430	5,011	5,011
South America	2,504	2,017	2,060	2,163	2,238	2,238
European Union	7,502	7,485	5,941	7,757	8,000	8,000
Other Europe	1,525	1,432	1,264	1,421	1,438	1,438
Former Soviet Union - 12	4,778	5,490	4,236	4,114	4,061	4,715
Middle East	276	365	325	340	350	350
North Africa	46	109	111	111	111	111
Sub-Saharan Africa	59	28	41	43	60	60
East Asia	781	791	841	851	851	851
South Asia	0	0	0	0	0	0
Southeast Asia	0	0	0	0	0	0
Oceania	1,760	1,620	1,051	1,338	1,530	1,530
<b>Total</b>	<b>22,801</b>	<b>25,513</b>	<b>19,401</b>	<b>22,568</b>	<b>23,650</b>	<b>24,304</b>
<b>Domestic Consumption</b>						
North America	4,200	4,851	4,258	4,472	4,721	4,721
South America	2,510	2,202	2,084	2,233	2,347	2,347
European Union	7,475	7,400	6,275	7,375	7,675	7,675
Other Europe	1,491	1,356	1,309	1,402	1,451	1,451
Former Soviet Union - 12	4,707	5,294	3,985	3,802	3,730	4,334
Middle East	280	370	325	345	350	350
North Africa	59	109	116	113	121	121
Sub-Saharan Africa	70	69	68	72	75	75
East Asia	1,200	1,316	1,366	1,543	1,551	1,576
South Asia	46	53	31	67	50	50
Southeast Asia	19	28	16	24	28	28
Oceania	1,225	1,133	780	803	930	930
<b>Total</b>	<b>23,282</b>	<b>24,181</b>	<b>20,613</b>	<b>22,251</b>	<b>23,029</b>	<b>23,658</b>
<b>Ending Stocks</b>						
North America	823	2,022	1,213	944	1,204	1,196
South America	187	164	185	169	179	179
European Union	424	596	253	608	898	898
Other Europe	206	197	154	206	209	210
Former Soviet Union - 12	255	295	259	221	227	252
Middle East	9	8	7	2	8	8
North Africa	0	0	0	0	0	0
Sub-Saharan Africa	23	21	26	30	35	35
East Asia	141	144	145	154	154	154
South Asia	0	0	0	0	0	0
Southeast Asia	0	0	0	0	0	0
Oceania	398	351	329	305	305	305
<b>Total</b>	<b>2,466</b>	<b>3,798</b>	<b>2,571</b>	<b>2,639</b>	<b>3,219</b>	<b>3,237</b>

NOTES: Regional definitions appear on last page of this circular. Imports are reported on a trade year basis. All other data are reported using local marketing years.

**World Rye Trade**  
**October/September Year, Thousand Metric Tons**

	2021/22	2022/23	2023/24	2024/25	2025/26 Dec	2025/26 Jan
<b>TY Exports</b>						
Canada	157	222	157	155	190	190
European Union	210	138	213	59	100	100
Russia	125	65	190	70	30	30
Ukraine	124	14	8	3	10	10
Belarus	5	5	5	5	5	5
Others	22	30	8	1	1	1
<b>Subtotal</b>	643	474	581	293	336	336
<b>United States</b>	3	5	6	3	5	5
<b>World Total</b>	646	479	587	296	341	341
<b>TY Imports</b>						
European Union	219	131	167	10	40	40
Japan	13	11	8	9	10	10
Kazakhstan	1	10	24	37	10	10
Norway	3	2	7	7	10	10
Israel	5	0	0	5	5	5
United Kingdom	11	4	7	9	5	5
Korea, South	4	4	4	3	4	4
Others	47	10	12	9	7	8
<b>Subtotal</b>	303	172	229	89	91	92
<b>Unaccounted</b>	12	32	41	-6	50	49
<b>United States</b>	331	275	317	213	200	200
<b>World Total</b>	646	479	587	296	341	341

TY=Trade Year, see Endnotes.

**World Rye Production, Consumption, and Stocks**  
**Local Marketing Years, Thousand Metric Tons**

	2021/22	2022/23	2023/24	2024/25	2025/26 Dec	2025/26 Jan
<b>Production</b>						
European Union	7,996	7,546	7,647	6,894	7,200	7,200
Russia	1,716	2,000	1,700	1,200	950	1,000
Belarus	845	750	780	800	760	760
Canada	372	520	358	421	683	683
Turkey	200	273	320	320	300	300
Ukraine	600	315	240	220	205	205
Argentina	225	179	218	215	190	190
Others	199	250	191	186	181	181
<b>Subtotal</b>	12,153	11,833	11,454	10,256	10,469	10,519
<b>United States</b>	249	316	264	374	316	316
<b>World Total</b>	12,402	12,149	11,718	10,630	10,785	10,835
<b>Total Consumption</b>						
European Union	7,950	7,200	7,485	7,225	7,250	7,250
Russia	1,700	1,850	1,600	1,125	950	1,000
Belarus	825	750	750	800	775	775
Canada	231	305	180	219	440	440
Turkey	228	283	334	320	300	300
Ukraine	365	262	282	272	252	252
Argentina	225	179	218	215	190	190
Norway	45	63	56	59	60	60
Kazakhstan	45	50	24	75	35	35
Australia	32	32	32	32	32	32
Others	121	92	113	103	108	108
<b>Subtotal</b>	11,769	11,088	11,128	10,457	10,433	10,483
<b>United States</b>	522	607	627	587	511	511
<b>World Total</b>	12,291	11,695	11,755	11,044	10,944	10,994
<b>Ending Stocks</b>						
European Union	888	1,202	1,313	899	789	789
Canada	84	105	91	143	196	196
Russia	93	179	89	94	64	64
Belarus	44	37	65	63	46	46
Ukraine	164	199	155	93	37	37
Kazakhstan	4	4	1	9	7	7
Japan	1	1	1	1	1	1
Others	24	14	0	0	0	0
<b>Subtotal</b>	1,302	1,741	1,715	1,302	1,140	1,140
<b>United States</b>	16	31	20	19	22	22
<b>World Total</b>	1,318	1,772	1,735	1,321	1,162	1,162

# Regional Rye Imports, Production, Consumption, and Stocks

Thousand Metric Tons

	2021/22	2022/23	2023/24	2024/25	Dec 2025/26	Jan 2025/26
<b>TY Imports</b>						
North America	332	277	321	214	200	200
South America	0	0	0	0	0	0
European Union	219	131	167	10	40	40
Other Europe	20	10	19	19	19	19
Former Soviet Union - 12	5	14	27	42	13	14
Middle East	41	0	0	5	5	5
Sub-Saharan Africa	0	0	0	0	0	0
East Asia	17	15	12	12	14	14
Oceania	0	0	0	0	0	0
<b>Total</b>	634	447	546	302	291	292
<b>Production</b>						
North America	621	836	622	795	999	999
South America	241	196	225	219	194	194
European Union	7,996	7,546	7,647	6,894	7,200	7,200
Other Europe	108	138	131	116	124	124
Former Soviet Union - 12	3,201	3,125	2,738	2,251	1,933	1,983
Middle East	200	273	320	320	300	300
Sub-Saharan Africa	3	3	3	3	3	3
East Asia	0	0	0	0	0	0
Oceania	32	32	32	32	32	32
<b>Total</b>	12,402	12,149	11,718	10,630	10,785	10,835
<b>Domestic Consumption</b>						
North America	753	912	807	806	951	951
South America	241	196	225	219	194	194
European Union	7,950	7,200	7,485	7,225	7,250	7,250
Other Europe	125	120	147	138	142	142
Former Soviet Union - 12	2,935	2,912	2,656	2,272	2,012	2,062
Middle East	233	283	334	325	305	305
Sub-Saharan Africa	3	3	3	3	3	3
East Asia	17	15	12	12	14	14
Oceania	32	32	32	32	32	32
<b>Total</b>	12,289	11,673	11,701	11,032	10,903	10,953
<b>Ending Stocks</b>						
North America	100	136	111	162	218	218
South America	0	0	0	0	0	0
European Union	888	1,202	1,313	899	789	789
Other Europe	0	0	0	0	0	0
Former Soviet Union - 12	305	419	310	259	154	154
Middle East	24	14	0	0	0	0
Sub-Saharan Africa	0	0	0	0	0	0
East Asia	1	1	1	1	1	1
Oceania	0	0	0	0	0	0
<b>Total</b>	1,318	1,772	1,735	1,321	1,162	1,162

NOTES: Regional definitions appear on last page of this circular. Imports are reported on a trade year basis. All other data are reported using local marketing years.