



#### ➔ Live Animal Prices

Last update : 30.04.2026

2026 Semaine / Week : 17

please note that from week 6-2026 the calculation of EU averages has been adjusted and average prices from previous weeks may have been updated. For updated information consult the

du / from : 20.04.26  
au / to : 26.04.26

#### PRIX DE MARCHÉ NATIONAUX et COMMUNAUTAIRES UE (en Euro & en % du prix de référence) NATIONAL and COMMUNITY EU MARKET PRICES (in Euro & as % of the reference price)

(Euro/100 kg PC/DW)	YOUNG MALE BOVINES 12>24 m - CATEGORIE A						BULLOCKS - CATEGORIE C						YOUNG BOVINES 8 >12 m - CATEGORIE Z						CATEGORIE A/C/Z			
	U2+U3	R2+R3	O2+O3	U+R+O	Change on last week	%	U2+U3+U4	R3+R4	O3	U+R+O	Change on last week	%	U2+U3	R2+R3	O2+O3	U+R+O	Change on last week	%	R3	% of ref. price	Change on last week	%
<b>Average prices</b>	690.16	689.23	700.10	690.53	- 12.77	-1.82%	496.16	682.32	703.94	692.72	- 1.64	-0.24%	732.26	703.34	646.45	702.30	- 4.01	-0.57%	693.01	311.61	- 9.53	-1.36%
	U	R	O	URO	0	0.0%	U	R	O	URO	0	0.0%	U	R	O	URO	0	0.0%	R3			
BE	717.52	676.37		712.12	- 13.02	- 1.8%													712.12		- 13.02	-1.8%
BG		720.73		720.73																		
CZ	656.59	688.62	680.28	676.17	- 2.52	- 0.4%									c							
DK		595.78	585.32	590.33	- 0.02	- 0.0%								641.41	668.81	659.02	- 0.03	0.0%	642.78		- 0.03	0.0%
DE	651.65	677.38		663.99	- 12.68	- 1.9%													663.99		- 12.68	- 1.9%
EE																						
IE							650.97	674.02	703.55	688.52	- 0.37	- 0.1%							688.52		- 0.37	- 0.1%
EL																						
ES	714.74	706.77		712.24	- 6.42	- 0.9%							732.30	726.59		729.01	- 5.19	- 0.7%	720.65		- 5.80	- 0.8%
FR	713.40	722.82	716.82	716.57	- 11.20	- 1.5%	731.97	705.96	716.17	- 8.69	- 1.2%								716.51		- 10.84	- 1.5%
HR	672.43	670.12		670.71	- 11.65	- 1.7%													670.71		- 11.65	- 1.7%
IT	711.82	604.77	630.11	697.74	- 32.65	- 4.5%							756.03	661.25	766.15	725.46	- 26.17	- 3.5%	699.91		- 32.14	- 4.4%
CY																						
LV		581.03		581.03	- 53.04	- 8.4%																
LT		604.20	618.25	613.83	- 9.60	- 1.5%																
LU																						
HU		507.88		507.88	- 82.26	- 13.9%													507.88		- 82.26	- 13.9%
MT																						
NL																						
AT	632.94	650.54		638.97	- 2.21	- 0.3%							738.45	714.76		727.53	+ 2.09	0.3%	645.60		- 1.89	- 0.3%
PL		673.16	688.85	682.53	- 19.99	- 2.8%																
PT	726.87	701.89		715.02	+ 4.78	+ 0.7%							672.82	666.24		667.36	- 11.43	- 1.7%	693.10		- 2.67	- 0.4%
RO	618.60	648.98	661.45	655.34	+ 9.02	+ 1.4%								721.02	676.14	679.05	+ 29.43	4.5%	672.94		+ 24.17	3.7%
SI	654.83	668.29	675.10	667.87	+ 1.14	+ 0.2%								707.35	692.74							
SK		695.55	620.73	661.93																		
FI		627.03	616.37	619.00	+ 7.17	+ 1.2%													619.00		+ 7.17	1.2%
SE		830.50	864.00	849.30	+ 19.56	+ 2.4%								800.41		800.41	+ 4.75	0.6%	846.26		+ 18.64	2.3%

Source : Member States



# Meat Market Observatory – Beef and Veal

## PRI.EU.BOV

### EU Weekly Beef Carcase Prices



2026 Semaine / Week : 17 du / from : 20.04.26  
au / to : 26.04.26

No form 692 price communication from EL, LU, NL

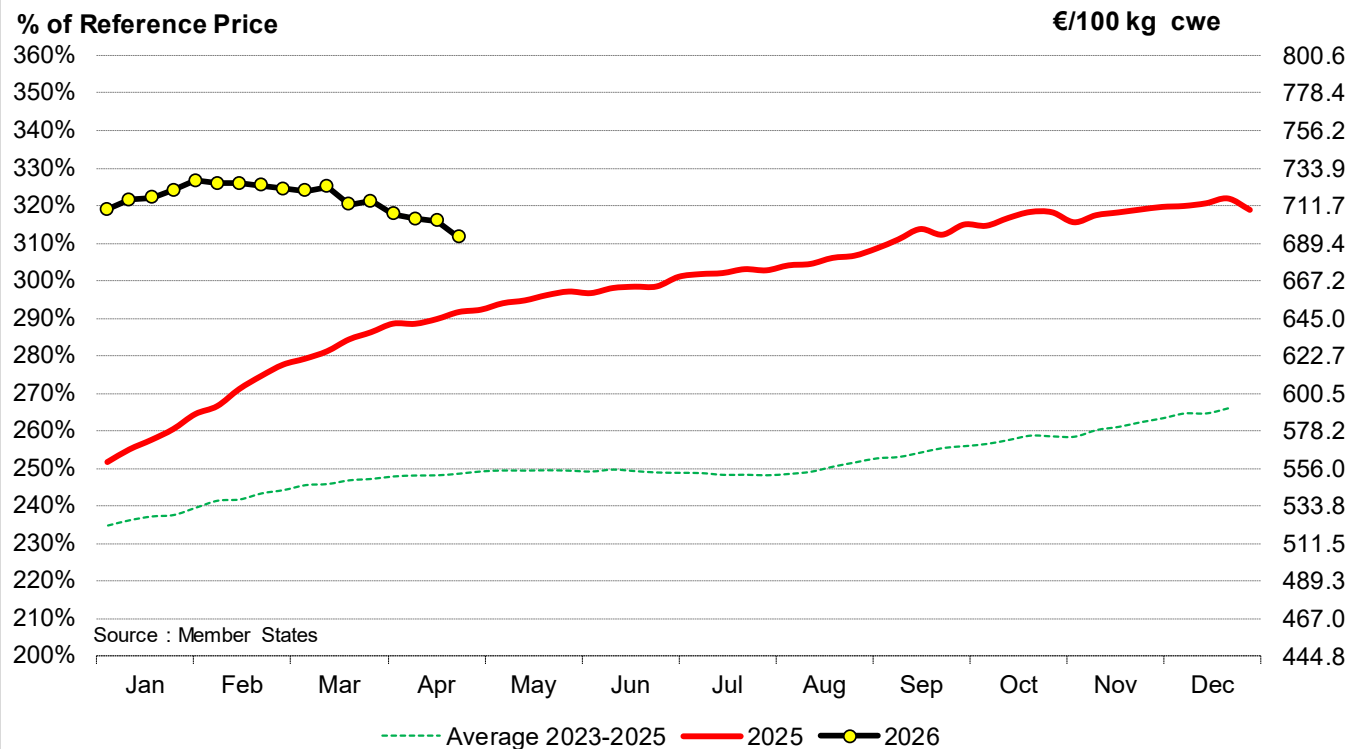
#### PRIX DE MARCHÉ - ETATS MEMBRES MARKET PRICES - MEMBER STATES

( €/100kg PC/DW )	BE	BG	CZ	DK	DE	EE	IE	EL	ES	FR	HR	IT	CY	LV	LT	LU	HU	MT	NL	AT	PL	PT	RO	SI	SK	FI	SE	EU	Change last week	%		
Young Bovines 8-12m Z-U2				642.8			656.4		772.5			785.6								771.1		693.0					811.0	761.6	-8.22	-1.07%		
Young Bovines 8-12m Z-U3				632.0			-		767.2			929.1			c					778.0		743.8					870.0	766.2	-3.25	-0.42%		
Young Bovines 8-12m Z-R2				647.2			-		735.0			654.3								712.8		666.7		720.4			794.8	705.6	-9.03	-1.26%		
Young Bovines 8-12m Z-R3				645.8			649.6		728.2			788.2			c					739.0		688.4	721.1	690.4			846.5	710.2	-5.86	-0.82%		
Young Bovines 8-12m Z-O2		824.3	c	633.2		c	660.3		663.7			731.7		452.0	c					618.6	622.9	660.4	642.8	662.3			794.8	645.9	-0.60	-0.09%		
Young Bovines 8-12m Z-O3				636.4			648.5		606.7			736.1			c						664.0	655.3					782.6	616.8	+3.14	+0.51%		
<b>Young Bovines 8 &gt; 12 m</b>		<b>801.2</b>	<b>c</b>	<b>639.0</b>	<b>712.0</b>	<b>c</b>	<b>653.1</b>	<b>712.6</b>	<b>714.0</b>			<b>732.4</b>		<b>491.3</b>	<b>c</b>	<b>c</b>			<b>597.3</b>	<b>c</b>	<b>654.5</b>	<b>668.0</b>	<b>649.7</b>	<b>693.8</b>	<b>c</b>		<b>797.4</b>	<b>691.2</b>	<b>-3.72</b>	<b>-0.54%</b>		
Young Bulls 12>24m A-U2	764.5		694.7	613.8	687.4		665.7		754.4	763.0	710.0	749.2			621.2					666.2	692.4	755.8	515.6	691.9	c	659.6	837.3	728.0	-14.07	-1.90%		
Young Bulls 12>24m A-U3	713.6		696.3	622.8	683.0		667.1		749.3	739.0	702.6	777.4			610.2					664.9	695.8	778.0	713.1	684.7	c	665.6	855.1	718.6	-7.00	-0.96%		
Young Bulls 12>24m A-R2	695.0	726.5	693.8	586.8	684.4	c	657.1		729.0	735.0	671.0	583.2		603.5	605.8	515.5	c			657.2	679.0	709.0	625.8	676.2	706.1	631.5	824.0	691.9	-14.72	-2.08%		
Young Bulls 12>24m A-R3	638.9	726.5	720.1	606.3	682.8		656.9		690.0	722.0	676.8	731.9		499.7	612.2					658.7	681.6	708.3	682.7	673.3	c	639.2	843.6	697.6	-6.51	-0.92%		
Young Bulls 12>24m A-O2	627.5	824.3	650.3	548.0	641.0		635.6		681.2	683.0	640.4	580.8	600.0	607.4	582.9		561.0	c		614.6	655.2	621.7	632.9	645.4	580.4	584.7	812.0	654.4	-11.43	-1.72%		
Young Bulls 12>24m A-O3	580.5		c	560.4	651.2		640.9		646.2	676.0	603.6	653.2		476.7	600.5					626.3	657.8	660.2	620.7	651.7	c	600.8	835.5	665.5	-7.03	-1.05%		
<b>Young Bulls 12 &gt; 24 m</b>	<b>737.9</b>	<b>820.8</b>	<b>c</b>	<b>584.7</b>	<b>679.3</b>	<b>c</b>	<b>654.6</b>	<b>649.6</b>	<b>730.6</b>	<b>733.8</b>	<b>673.8</b>	<b>732.2</b>	<b>600.0</b>	<b>598.3</b>	<b>597.8</b>	<b>c</b>	<b>554.5</b>	<b>c</b>	<b>760.3</b>	<b>661.4</b>	<b>669.6</b>	<b>720.0</b>	<b>639.9</b>	<b>665.8</b>	<b>c</b>	<b>603.4</b>	<b>829.6</b>	<b>701.1</b>	<b>-10.96</b>	<b>-1.54%</b>		
Bulls B R3			675.3		609.3		628.3		670.0		-	530.0			696.7	601.7				634.8	686.6	567.8	668.7	633.2	c		833.2	675.6	-13.49	-1.96%		
<b>Bulls</b>			<b>675.3</b>		<b>609.3</b>		<b>628.3</b>		<b>670.0</b>		<b>-</b>	<b>530.0</b>			<b>696.7</b>	<b>601.7</b>				<b>634.8</b>	<b>686.6</b>	<b>567.8</b>	<b>668.7</b>	<b>633.2</b>	<b>c</b>		<b>833.2</b>	<b>675.6</b>	<b>-13.49</b>	<b>-1.96%</b>		
Bullocks C-U2							678.3		-		714.9									700.7		-					885.2	685.2	-4.95	-0.72%		
Bullocks C-U3					697.6		677.2		-		-	698.3															900.9	685.4	-9.92	-1.43%		
Bullocks C-U4							675.4		-		-	689.2																697.7	689.7	-9.84	-1.39%	
Bullocks C-R3				636.3	679.8	c	668.7		732.0		603.4										696.8							858.4	685.0	-0.13	-0.02%	
Bullocks C-R4				634.3			673.2		-		-										698.6		700.0	721.1				826.5	683.9	+1.89	+0.28%	
Bullocks C-O3			c	642.3	616.0		657.1		665.0		490.0										662.1		506.8					810.8	664.9	-1.86	-0.28%	
Bullocks C-O4				637.2			666.3		-		-										c		670.0					820.9	668.8	+3.61	+0.54%	
<b>Bullocks</b>			<b>c</b>	<b>640.6</b>	<b>689.9</b>	<b>c</b>	<b>664.7</b>		<b>691.3</b>		<b>747.7</b>					<b>c</b>				<b>c</b>	<b>678.6</b>	<b>654.8</b>	<b>684.3</b>					<b>823.0</b>	<b>675.2</b>	<b>-1.71</b>	<b>-0.25%</b>	
0																															+0.00	+0.00%
Cows D-R3	657.0	510.0	578.2	599.5	623.8	c	627.4		611.7	747.0	435.2	561.2		642.7	550.5					602.7	608.2	559.8	619.4	557.6	c		796.0	689.0	-5.68	-0.82%		
Cows D-R4	614.0	582.8	599.6	599.6	625.2	c	624.7		718.5	734.0	549.8	676.2		638.1	523.6						613.6	622.6	615.9	569.4	565.9	c	622.6	776.0	649.6	-3.30	-0.51%	
Cows D-O2	569.2	498.1	531.6	573.2	595.1	505.8	594.0		541.1	679.0	442.4	522.0		524.1	521.9						562.3	565.5	554.4	591.5	429.0	396.5	601.5	753.5	576.5	-9.19	-1.57%	
Cows D-O3	582.0	498.5	543.2	593.2	605.9	509.1	595.2		603.9	656.0	533.7	567.3		542.0	569.4						557.3	595.7	536.0	591.0	511.2	542.5	620.8	785.5	610.5	-2.65	-0.43%	
Cows D-O4	619.0	609.9	560.2	599.2	611.1	543.7	595.5		694.9	637.0	618.0	595.4		537.3	575.1						580.4	615.5	555.9	586.9	475.4	c	604.1	768.9	614.8	+2.78	+0.45%	
Cows D-P2	526.5	459.3	457.8	537.4	532.1	480.4	549.8		521.1	609.0	510.1	492.3	460.0	430.0	466.5						514.1	552.1	468.1	566.1	407.0	288.8	580.4	739.2	539.8	-4.37	-0.80%	
Cows D-P3	540.0	469.4	394.3	569.1	546.0	c	579.9		535.2	627.0	-	516.5	460.0	351.0	500.3						488.7	593.6	448.0	594.2	479.7		593.5	764.1	589.7	-5.82	-0.98%	
<b>Cows</b>	<b>557.3</b>	<b>485.7</b>	<b>514.3</b>	<b>567.5</b>	<b>593.3</b>	<b>c</b>	<b>582.5</b>	<b>459.6</b>	<b>581.0</b>	<b>671.4</b>	<b>473.9</b>	<b>523.7</b>	<b>460.0</b>	<b>522.5</b>	<b>522.2</b>	<b>c</b>	<b>470.0</b>	<b>c</b>	<b>556.3</b>	<b>571.0</b>	<b>582.7</b>	<b>531.1</b>	<b>585.8</b>	<b>495.4</b>	<b>c</b>	<b>595.3</b>	<b>769.5</b>	<b>600.6</b>	<b>-4.66</b>	<b>-0.77%</b>		
Heifers E-U2	786.8				675.9		685.4		773.8		-	816.1			c						674.2	672.9	757.6					788.4	788.4	-14.46	-1.80%	
Heifers E-U3	739.3		c	666.0	669.3		690.4		764.7	804.0	660.5	771.4			609.7						680.8	697.9	769.4		638.6	665.2	839.5	754.9	-11.15	-1.46%		
Heifers E-U4			c	648.2	665.0		690.1				630.1				c						667.0	709.0			630.1			797.9	675.3	-2.40	-0.35%	
Heifers E-R2	713.3		590.6	600.1	662.1		669.1		759.1	750.0	-	729.6		684.7	493.7						662.9	659.7	731.3	655.5	642.6	c	609.8	825.4	700.9	-10.01	-1.41%	
Heifers E-R3	684.6		573.4	656.1	664.5		675.7		755.7	750.0	708.1	701.1		696.7	583.4						669.1	679.9	727.9	630.5	647.1		629.7	825.7	713.0	-4.97	-0.69%	
Heifers E-R4			577.9	637.3	664.1		679.9		756.7	733.0	689.4			536.7	580.1						653.5	706.4	681.3	676.4	639.7		645.8	808.8	693.4	-3.40	-0.49%	
Heifers E-O2	573.5	625.3	521.4	569.6	580.7	524.1	650.8		638.3		-	676.8		516.2	501.7						592.9	625.2	675.6	603.1	650.1	369.0	545.7	786.1	612.6	+2.73	+0.45%	
Heifers E-O3	576.8	574.3	558.0	612.3	600.5	541.3	667.5		643.2	681.0	650.2	556.4		545.0	560.7						601.6	640.8	694.3	617.5	637.2		578.0	809.7	646.6	-1.89	-0.29%	
Heifers E-O4			c	620.1	604.6		667.4		699.2		-	430.6		611.7	576.6		</															



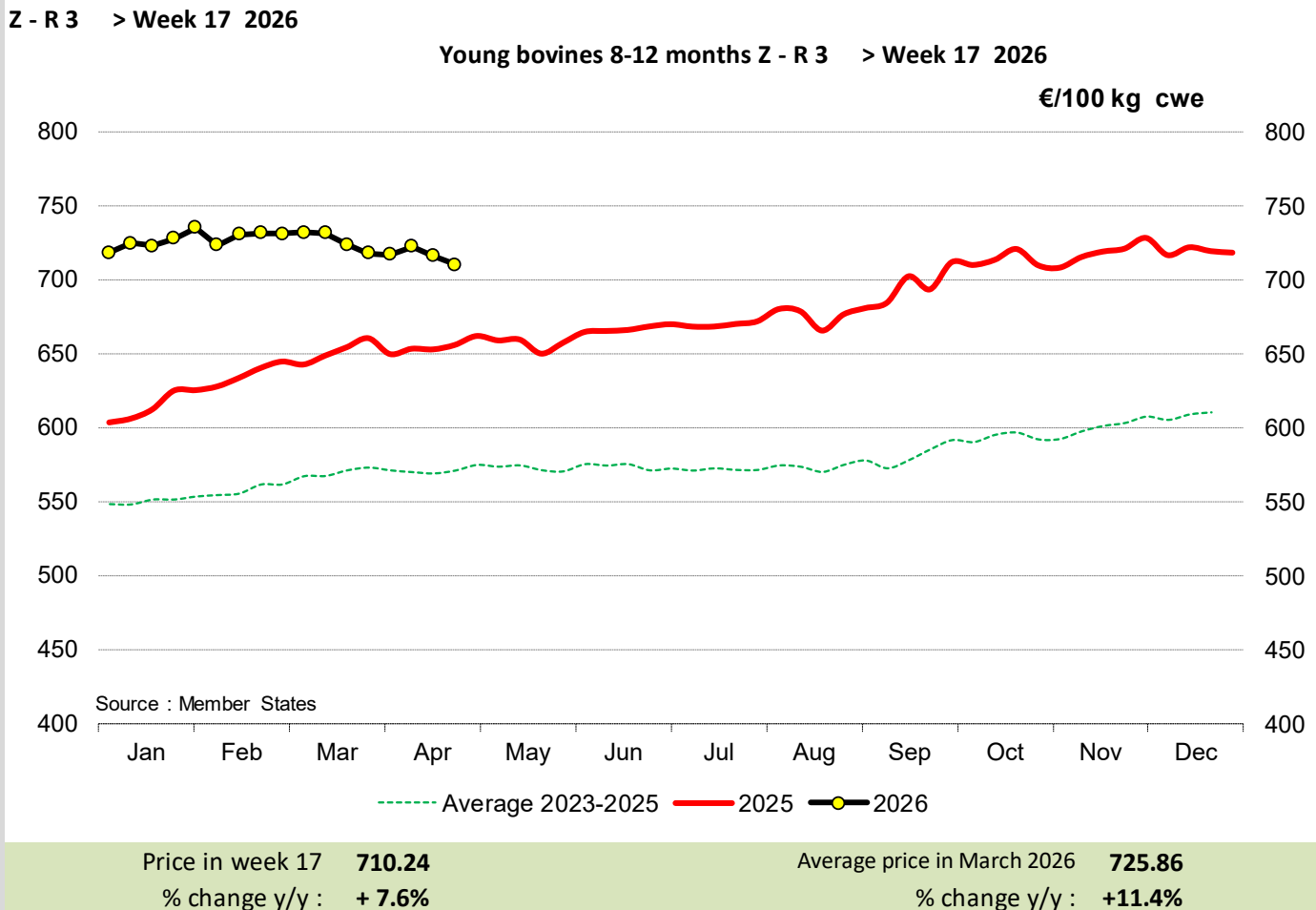
ACZ - R 3 > Week 17 2026

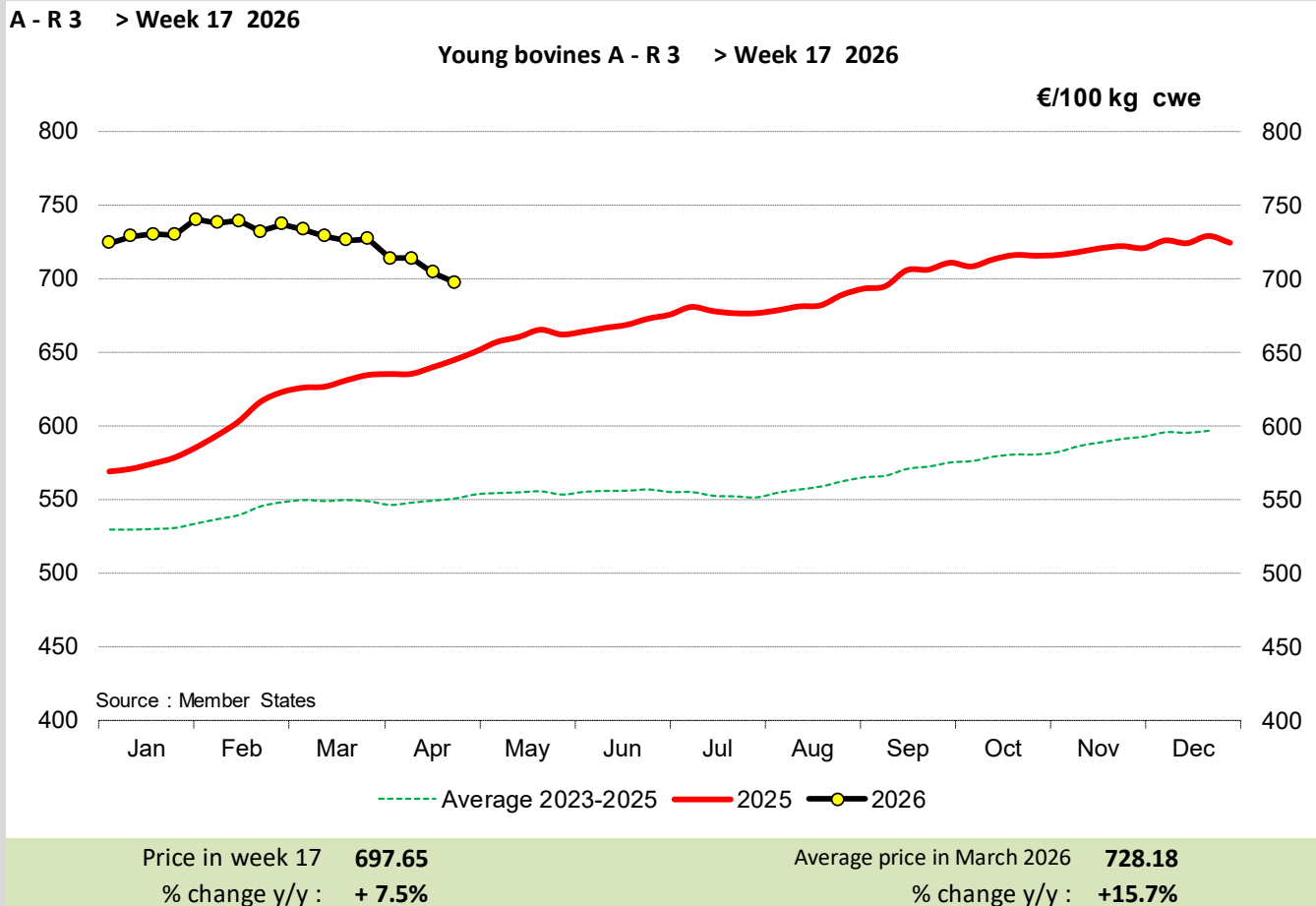
Male bovines carcasses ACZ - R 3 > Week 17 2026



Source : Member States

Price in week 17	<b>693.01</b>	Average price in March 2026	<b>716.87</b>
% change y/y :	<b>+ 6.4%</b>	% change y/y :	<b>+14.0%</b>
% of ref. price in week 17	<b>311.6%</b>		



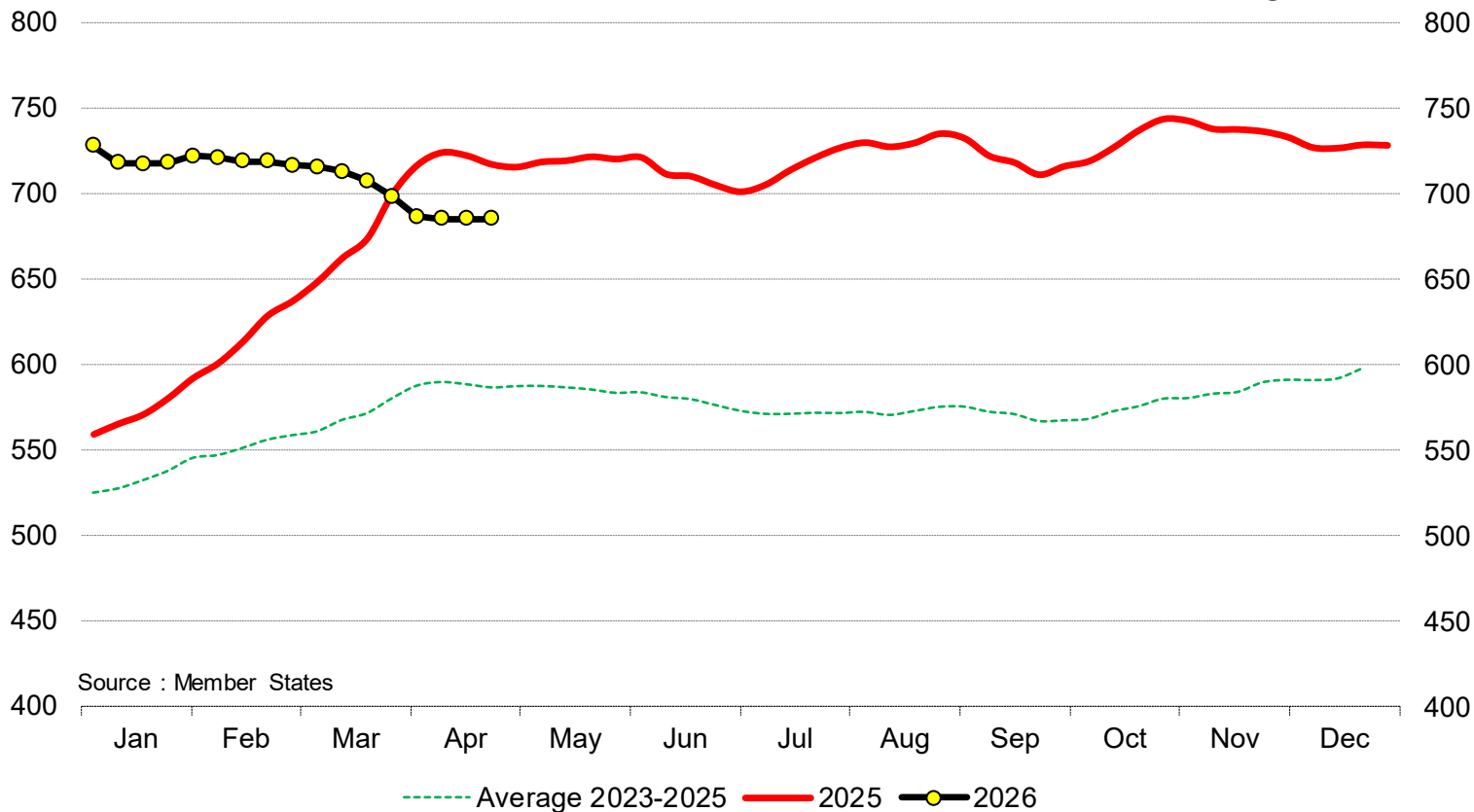




EU Weekly C - R 3 > Week 17 2026

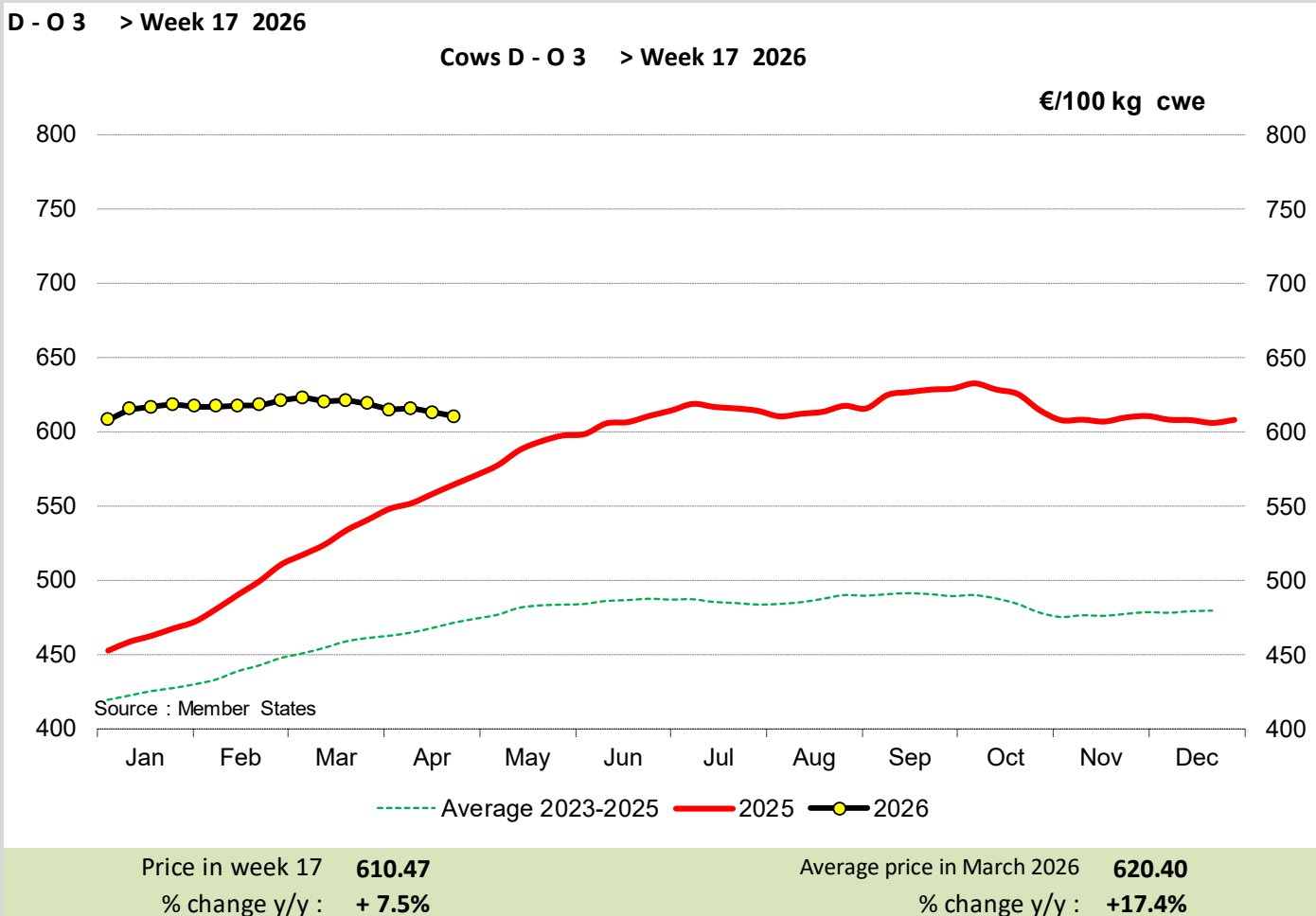
Bullocks C - R 3 > Week 17 2026

€/100 kg cwe



Source : Member States

Price in week 17	<b>685.05</b>	Average price in March 2026	<b>707.44</b>
% change y/y :	<b>- 4.6%</b>	% change y/y :	<b>+5.6%</b>

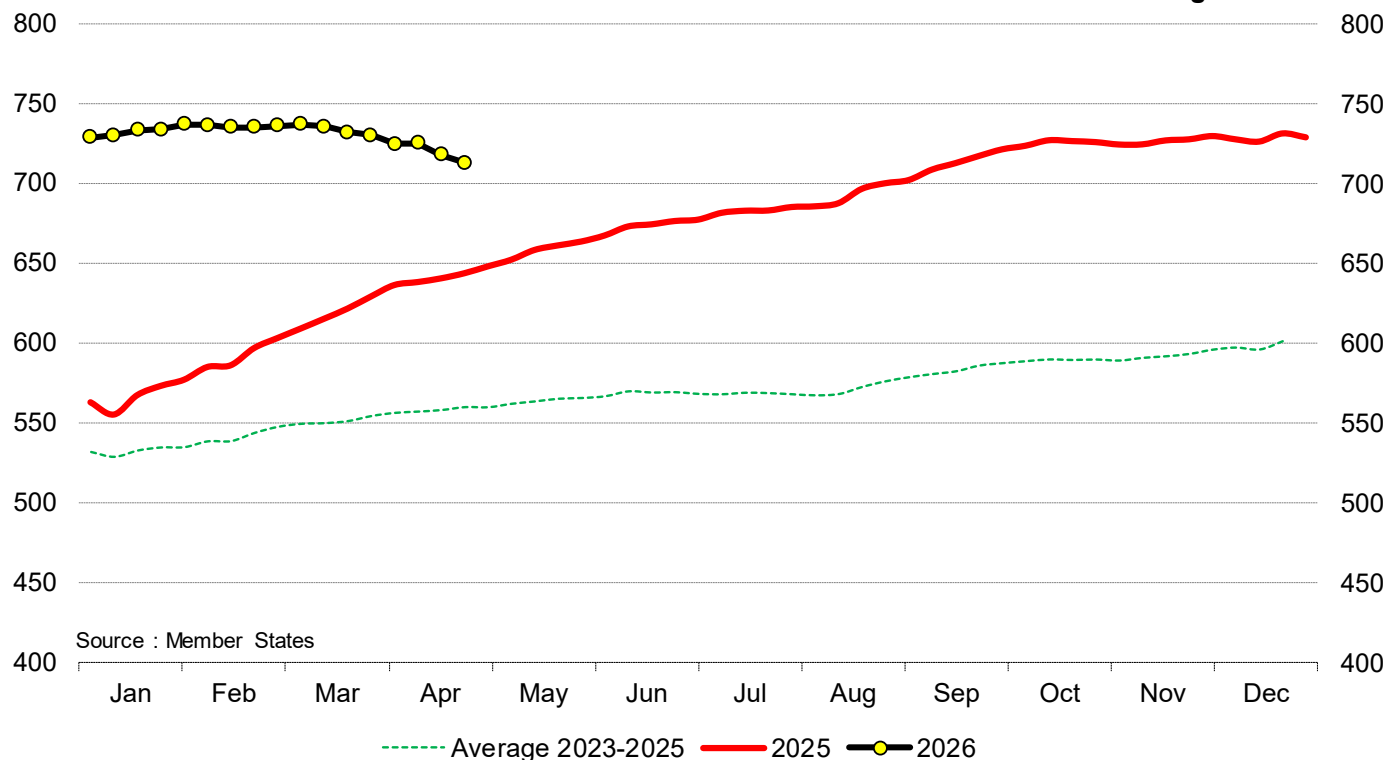




E - R 3 > Week 17 2026

Cows E - R 3 > Week 17 2026

€/100 kg cwe



Source : Member States

Price in week 17 **713.05**  
% change y/y : **+ 9.7%**

Average price in March 2026 **733.17**  
% change y/y : **+18.6%**



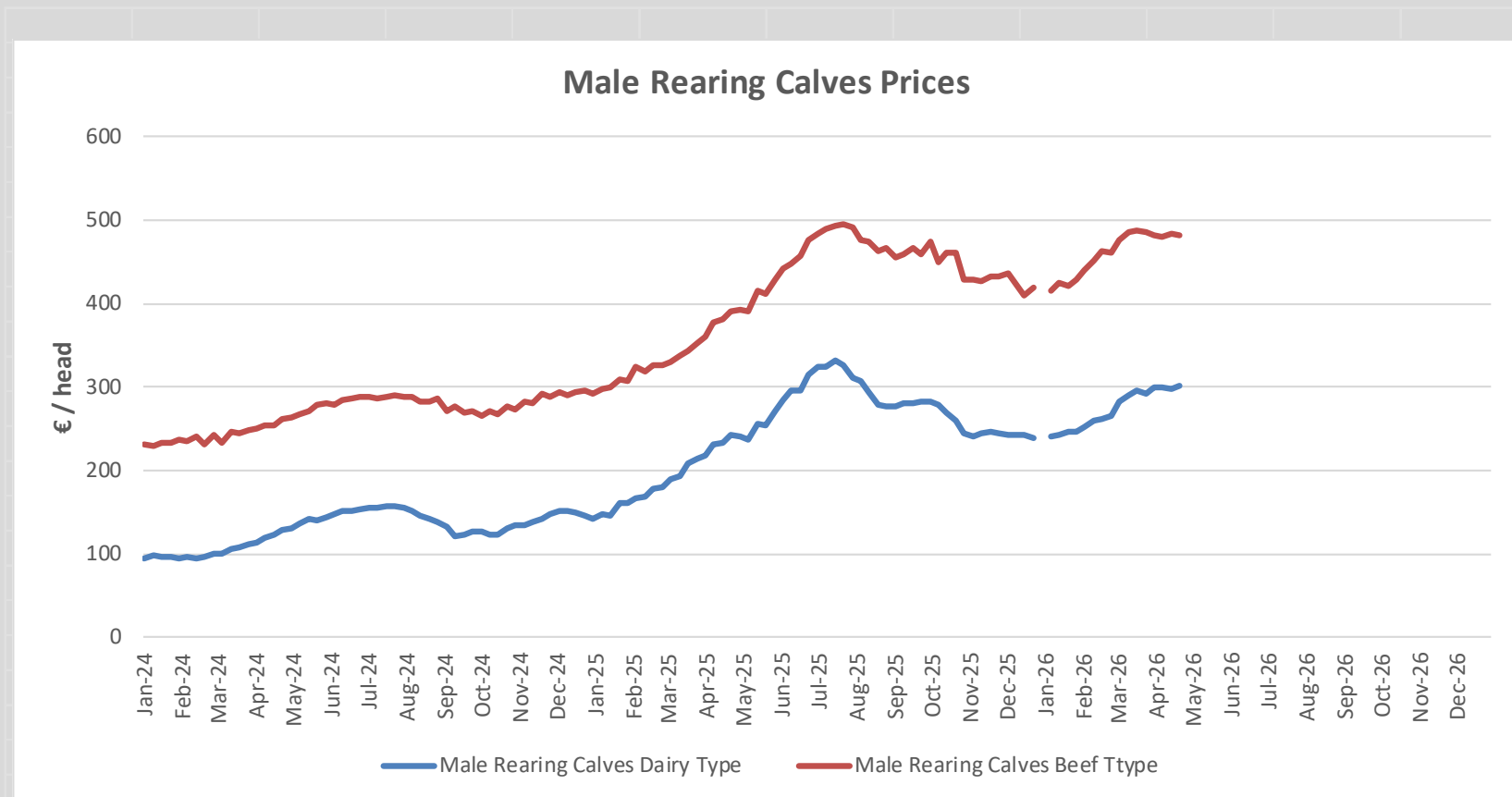
2026 Week 17 from 20/04/2026 to 26/04/2026

### Prices of Live Bovine Animals

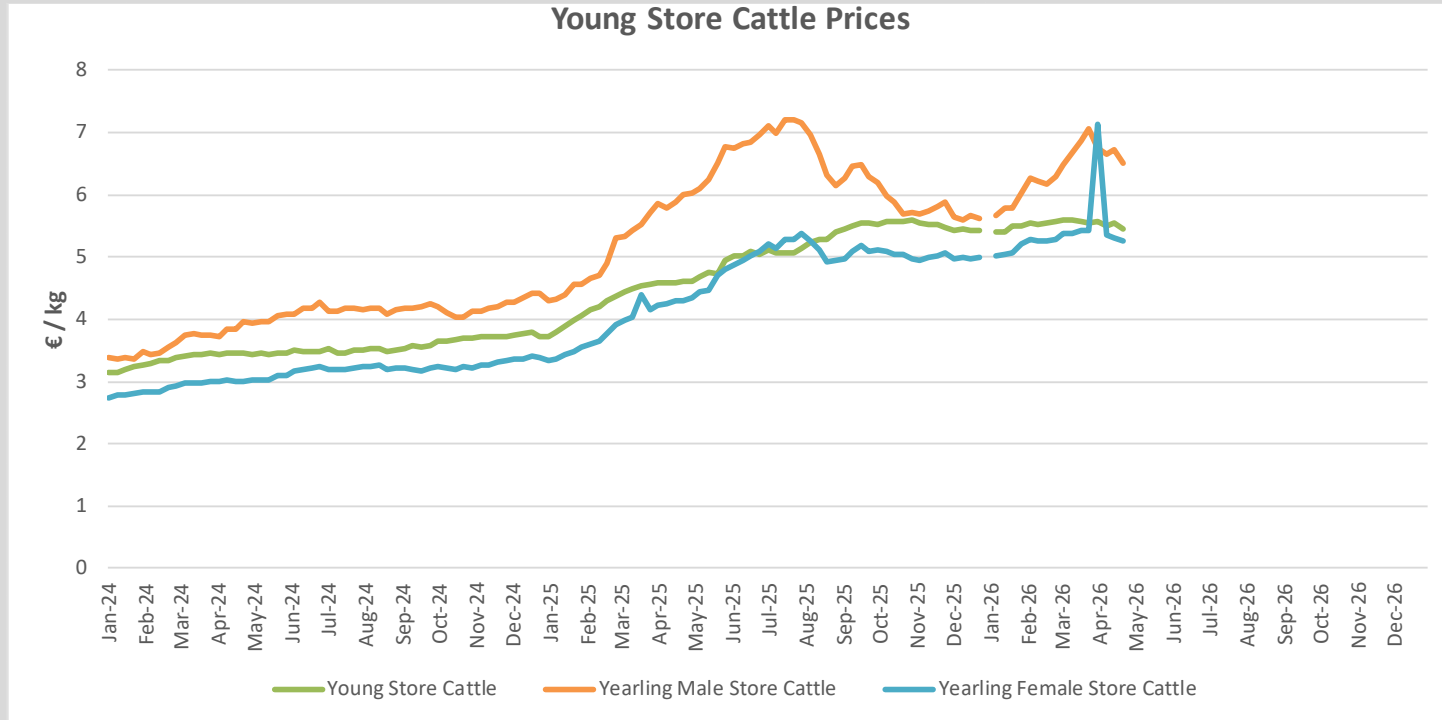
Male Calves aged between 8 days and 4 weeks																
	BE	DK	DE	IE	ES	FR	HR	IT	NL	AT	PL	PT	RO	SI	SE	EU
<b>Male Calves Dairy type</b>																
<b>Market Price € / head</b>	232.17	297.73	311.93	284.50	171.33	280.38		307.13		352.16	347.53					302.48
Previous week market price	232.17	294.39	315.14	276.90	171.33	282.83			309.00	294.33	295.55					298.79
Difference with previous week	0.00	3.33	-3.21	7.60	0.00	-2.45		12.80		56.61						3.69
% of EU average	77	98	103	94	57	93		102		116	115					
Coefficient	3.07	3.21	21.25	8.77	4.58	18.21	0.42	10.44	9.04	3.17	11.61		6.23			
<b>Male Calves Beef type</b>																
<b>Market Price € / head</b>	657.08		465.00	391.91	317.38	544.08	891.36	383.38	535.00	761.26	421.37		636.32			481.58
Previous week market price	657.08		507.70	381.35	317.59	535.40	937.36	367.96	535.00	661.01			687.59			483.79
Difference with previous week	0.00		-42.70	10.56	-0.21	8.68	-46.00	15.42	0.00	100.25			-51.27			-2.21
% of EU average	136		97	81	66	113	185	80	111	158	87		132			
Coefficient	3.49		17.06	9.12	11.29	27.37	0.53	9.01	6.37	2.80	8.52		4.45			

Store Cattle																
	BE	DK	DE	IE	ES	FR	HR	IT	NL	AT	PL	PT	RO	SI	SE	EU
<b>Young Store Cattle</b>																
<b>Market Price € / kg</b>	5.92			4.56	6.20	5.82	5.31	5.65		4.08		6.22			4.57	5.45
Previous week market price	5.92			4.55	6.20	5.96	5.27	5.71		4.72		6.73			4.22	5.56
Difference with previous week	0.00			0.01	0.00	-0.14	0.04	-0.06		-0.64		-0.51			0.35	-0.10
% of EU average	109			84	114	107	97	104		75		114			84	
Coefficient	5.00			19.79	8.71	42.65	1.36	8.18		5.63		4.28			4.39	
<b>Yearling Male Store Cattle</b>																
<b>Market Price € / kg</b>	6.34		11.56	3.97		4.95		5.90		3.57		5.89			5.10	6.50
Previous week market price	6.34		11.97	3.98		5.14		6.02		c		4.89			5.94	6.73
Difference with previous week	0.00		-0.41	-0.01		-0.19		-0.12				1.00			-0.84	-0.23
% of EU average	98		178	61		76		91		55		91			78	
Coefficient	3.09		25.74	24.66		25.38		10.27		5.26		1.85			3.75	
<b>Yearling Female Store Cattle</b>																
<b>Market Price € / kg</b>	3.31		7.13	3.92		5.05		5.20		3.53		5.35			4.28	5.27
Previous week market price	3.31		7.21	3.91		5.17		5.21				4.48			4.55	5.32
Difference with previous week	0.00		-0.08	0.01		-0.12		-0.01				0.87			-0.27	-0.05
% of EU average	63		135	74		96		99		67		102			81	
Coefficient	5.02		25.19	14.48		33.10		13.01		3.87		2.17			3.17	

Calves Slaughtered before 8 months																
	BE	DK	DE	IE	ES	FR	HR	IT	NL	AT	PL	PT	RO	SI	SE	EU
<b>Market Price € / 100 kg</b>	c		c			893.30	827.31	745.10	809			639.39		692.97		811.56
Previous week market price	c		c			908.90	798.67	754.25	823.00			679.79		704.84		825.89
Difference with previous week						-15.60	28.64	-9.15	-14.00			-40.40		-11.87		-14.33
% of EU average						110	102	92	100			79		85		
Coefficient	9.26		7.73			26.41	0.92	17.22	36.98			1.22		0.26		



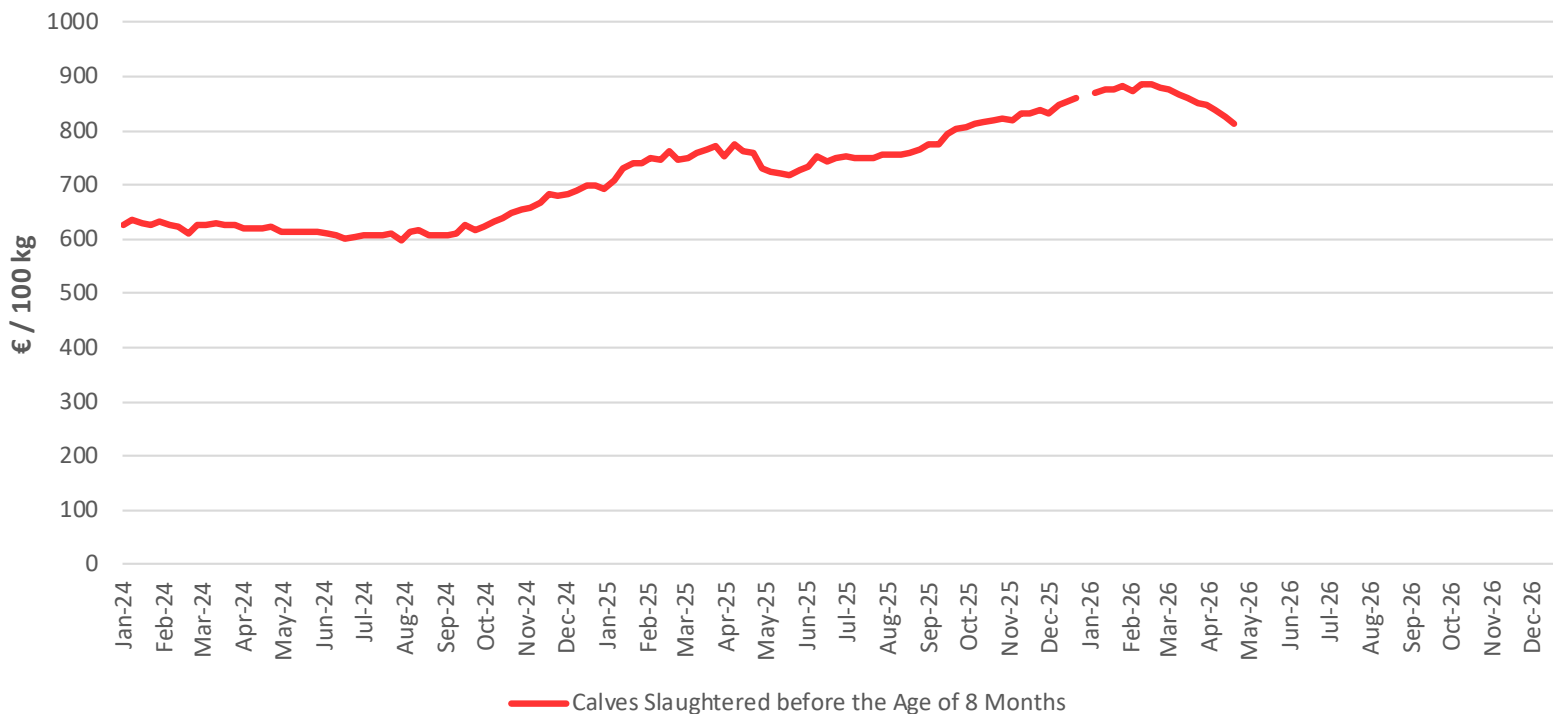
<b>Male Rearing Calves Beef Type</b>		<b>Male Rearing Calves Dairy type</b>	
Price in week 17	<b>481.58</b>	Price in week 17	<b>302.48</b>
% change y/y :	<b>+23.1%</b>	% change y/y :	<b>+24.3%</b>



<b>Young Store Cattle</b>		<b>Yearling Male Store Cattle</b>	
Price in week 17	<b>5.45</b>	Price in week 17	<b>6.50</b>
% change y/y :	+18.3%	% change y/y :	+8.4%
<b>Yearling Female Store Cattle</b>			
Price in week 17	<b>5.27</b>		
% change y/y :	+22.7%		



### Calves Slaughtered before the Age of 8 Months



Price in week 17 **811.56**

% change y/y : **+6.8%**