



➔ Live Animal Prices

Last update : **04.06.2026**

2026 Semaine / Week : 22

please note that from week 6-2026 the calculation of EU averages has been adjusted and average prices from previous weeks may have been updated. For updated information consult the

du / from : **25.05.26**
au / to : **31.05.26**

PRIX DE MARCHÉ NATIONAUX et COMMUNAUTAIRES UE (en Euro & en % du prix de référence) NATIONAL and COMMUNITY EU MARKET PRICES (in Euro & as % of the reference price)

(Euro/100 kg PC/DW)	YOUNG MALE BOVINES 12>24 m - CATEGORIE A						BULLOCKS - CATEGORIE C						YOUNG BOVINES 8 >12 m - CATEGORIE Z						CATEGORIE A/C/Z			
	U2+U3	R2+R3	O2+O3	U+R+O	Change on last week	%	U2+U3+U4	R3+R4	O3	U+R+O	Change on last week	%	U2+U3	R2+R3	O2+O3	U+R+O	Change on last week	%	R3	% of ref. price	Change on last week	%
	Average prices	645.64	652.93	677.26	654.44	+ 1.91	+0.3%	479.04	657.70	678.73	667.96	- 8.47	-1.25%	705.38	684.53	611.57	678.13	- 3.87	-0.57%	660.82	297.13	- 0.54
	U	R	O	URO	O	0.0%	U	R	O	URO	O	0.0%	U	R	O	URO	O	0.0%	R3			
BE	677.87	655.37		674.92	- 6.21	- 0.9%													674.92		- 6.21	-0.9%
BG																						
CZ	603.68	630.61	604.03	616.42	-14.61	- 2.3%																
DK		587.89	572.49	579.88	- 1.02	- 0.2%							627.86	653.29	644.20		- 1.48	- 0.2%	628.99		- 1.37	-0.2%
DE	596.92	619.22		607.62	+ 1.75	+ 0.3%													607.62		+ 1.75	0.3%
EE																						
IE							628.50	649.46	678.23	663.74	- 10.75	- 1.6%							663.74		- 10.75	- 1.6%
EL																						
ES	685.63	683.52		684.99	- 10.89	- 1.6%							700.29	702.27		701.42	- 6.17	- 0.9%	693.23		- 8.52	- 1.2%
FR	666.72	674.25	667.64	669.03	- 3.57	- 0.5%	706.97	681.54	691.53	+ 4.26	0.6%							672.27		- 2.44	- 0.4%	
HR	653.68	686.07		677.90	+ 0.53	+ 0.1%								545.44								
IT																						
CY																						
LV		677.56		677.56	+ 58.45	+ 9.4%																
LT		548.19	563.90	558.98	+ 3.29	+ 0.6%																
LU		c																				
HU																						
MT																						
NL		674.65	745.04	707.84	+ 34.68	+ 5.2%								603.56	581.01	585.79	- 4.15	- 0.7%	617.90		+ 6.07	1.0%
AT	575.42	591.98		581.09	- 5.01	- 0.9%							684.09	674.68		679.74	- 7.87	- 1.1%	588.48		- 5.22	- 0.9%
PL		631.98	660.70	649.13	+ 26.98	+ 4.3%																
PT	725.81	719.69		722.95	+ 16.76	+ 2.4%							655.68	675.98		672.44	+ 4.34	0.6%	699.72		+ 11.05	1.6%
RO	618.83	643.34	653.38	647.65	+ 15.68	+ 2.5%								728.79	649.76	654.88	+ 5.81	0.9%	653.02		+ 8.35	1.3%
SI	614.80	637.78	631.74	630.06	- 15.62	- 2.4%								622.18								
SK			636.21																			
FI		629.40	623.52	624.98	+ 8.08	+ 1.3%													624.98		+ 8.08	1.3%
SE		859.23	879.82	870.79	+ 12.12	+ 1.4%								819.68		819.68	+ 18.01	2.2%	867.61		+ 12.49	1.5%

Source : Member States

Meat Market Observatory – Beef and Veal

PRI.EU.BOV

EU Weekly Beef Carcase Prices



2026 Semaine / Week : 22 du / from : 25.05.26
au / to : 31.05.26

No form 692 price communication from EL, IT

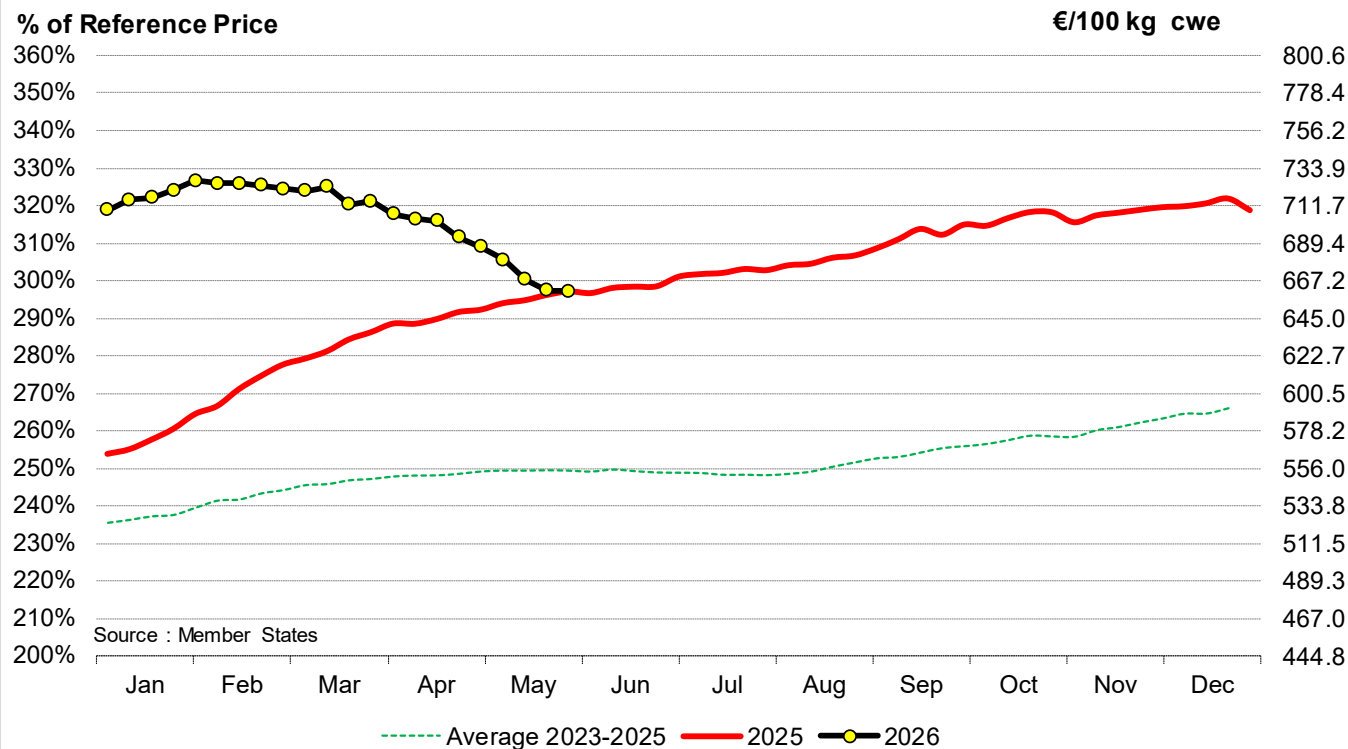
PRIX DE MARCHÉ - ETATS MEMBRES MARKET PRICES - MEMBER STATES

(€/100kg PC/DW)	BE	BG	CZ	DK	DE	EE	IE	EL	ES	FR	HR	IT	CY	LV	LT	LU	HU	MT	NL	AT	PL	PT	RO	SI	SK	FI	SE	EU	Change last week	%		
Young Bovines 8-12m Z-U2				634.1					735.9							c			616.0	719.7		691.6	-					739.5	-7.71	-1.03%		
Young Bovines 8-12m Z-U3				622.8			669.9		737.0							c			610.0	717.0		689.2	-					734.5	-6.79	-0.92%		
Young Bovines 8-12m Z-R2				632.6			631.6		710.6					528.4					614.0	672.2	610.5	684.2	-	624.5			808.2	690.8	-1.36	-0.20%		
Young Bovines 8-12m Z-R3				633.3					703.7										603.0	698.7		680.4	728.9	670.4		882.0	687.8	-4.03	-0.58%			
Young Bovines 8-12m Z-O2		741.6		617.6					644.1	521.5				460.4		c			550.0	c	614.5	653.1	620.9				847.2	622.1	-3.10	-0.50%		
Young Bovines 8-12m Z-O3				622.5				639.2	601.6							c			557.0		672.3	613.6					885.9	600.0	-2.86	-0.47%		
Young Bovines 8 > 12 m		741.6		624.7			650.2	712.5	690.1	611.3	735.3			488.6		c			564.7	c	612.6	666.8	626.8	667.1	c		845.5	669.5	-3.97	-0.59%		
Young Bulls 12>24m A-U2	720.4		638.7	604.3	630.6		644.5		721.6	714.0	683.0				602.7		c		658.0	604.3	649.9	739.2	660.0	653.7		665.6	681.0	-3.95	-0.58%			
Young Bulls 12>24m A-U3	686.8		632.1	604.6	624.4		648.6		722.5	690.0	685.7				587.4			844.7	-	612.0	606.1	651.8	799.5	643.5	638.2	672.1	868.5	674.3	-2.03	-0.30%		
Young Bulls 12>24m A-R2	672.4	675.7	633.6	584.8	625.9		630.7		705.8	688.0	696.1			700.7	552.2		c		678.0	597.3	638.8	714.4	637.5	644.3	680.5	633.5	861.9	656.0	+1.95	+0.30%		
Young Bulls 12>24m A-R3	623.5		669.8	594.8	623.8		635.5		666.3	672.0	686.3			600.9	549.5		c	715.9		685.0	601.2	637.2	749.3	659.2	645.2	642.6	866.3	660.9	+4.39	+0.67%		
Young Bulls 12>24m A-O2	600.0	695.8	577.4	533.7	589.6		613.0		682.0	638.0	667.1		600.0	589.6	533.9		c	697.9		714.0	564.7	631.7	675.6	626.0	603.9	598.3	591.3	827.9	637.7	+11.34	+1.81%	
Young Bulls 12>24m A-O3	564.9		549.9	594.8			621.0		629.7	629.0	595.4			461.7	542.7				698.0	572.8	622.1	643.7	609.4	604.9		608.7	849.2	631.8	+3.96	+0.63%		
Young Bulls 12 > 24 m	699.8	790.6		573.7	621.8		633.4	687.0	705.3	685.1	682.2	694.8	600.0	611.7	549.0		c	677.8	c	670.9	601.7	635.4	733.4	632.5	627.6	c	609.1	850.3	643.0	+1.20	+0.18%	
Bulls B R3				c	560.8		596.6		644.0	681.3					538.7		c		575.6	643.6	505.0	658.7	637.2				855.5	641.9	+21.48	+3.46%		
Bulls				c	560.8		596.6		644.0	681.3					538.7		c		575.6	643.6	505.0	658.7	637.2				855.5	641.9	+21.48	+3.46%		
Bullocks C-U2							650.4												678.4		740.0							658.7	-8.10	-1.22%		
Bullocks C-U3					645.7		653.7													681.6								658.1	-9.54	-1.43%		
Bullocks C-U4							653.0													641.8								783.7	655.6	-9.99	-1.50%	
Bullocks C-R3			628.7	654.3			644.1		707.0											632.3			492.8					854.6	657.8	-8.63	-1.29%	
Bullocks C-R4							649.4													636.1			644.1					809.2	659.3	-12.22	-1.82%	
Bullocks C-O3			613.8				634.0		642.0											570.8								843.3	644.4	-6.31	-0.97%	
Bullocks C-O4							635.5		640.2																			824.5	643.5	-9.26	-1.42%	
Bullocks				c	620.3	650.7	c	640.7		667.5		743.4					c			c	667.4	551.3	672.9				842.8	650.9	-8.02	-1.22%		
0																															+0.00	+0.00%
Cows D-R3	629.0	623.1	572.6	593.1	609.1		597.8		556.1	725.0	668.5				474.2		c	511.9		554.0	570.1	592.3	531.6	612.1	482.4		c	837.3	666.2	+0.08	+0.01%	
Cows D-R4	670.7	576.7	584.9	584.9	612.1		592.7		626.6	713.0	655.1				506.2			533.3		622.0	583.5	594.9	579.0	586.8	535.7		639.4	814.4	626.6	-0.09	-0.01%	
Cows D-O2	556.8	525.2	533.1	553.8	580.7	457.0	567.2		514.8	664.0	511.5				491.6		c	580.4		539.0	538.1	554.0	521.1	571.5	401.5	428.6	599.6	796.3	565.1	+1.73	+0.31%	
Cows D-O3	573.7	530.4	535.3	580.8	593.2	490.2	570.8		552.2	629.0	708.0				476.0	532.2		c	531.8		549.0	544.3	568.4	518.8	576.8	511.8	617.3	814.8	590.5	+0.09	+0.02%	
Cows D-O4	606.2		536.5	587.0	597.2	567.8	571.4		628.6	606.0					521.2				562.0	546.7	570.3	522.1	533.6	498.4		c	624.4	784.6	587.9	-2.17	-0.37%	
Cows D-P2	511.8	500.5	455.1	523.3	515.3	502.0	542.4		478.5	572.0	440.0				410.5		c	384.1		c	469.0	494.7	526.9	470.7	538.4	399.7	290.0	582.8	742.2	519.8	-0.43	-0.08%
Cows D-P3	528.6	469.4	324.4	558.2	525.6		559.6		510.4	590.0					415.0		c	417.2		c	470.0	502.4	545.0	454.6	567.8	464.7	601.8	781.4	563.6	-2.90	-0.51%	
Cows	544.1	530.0	508.9	554.8	578.9		562.9	345.1	536.2	642.5	583.0	513.2	460.0	498.7	475.8		c	485.7	c	526.7	547.1	559.6	511.1	565.0	460.4	c	598.9	795.1	580.1	-0.35	-0.06%	
Heifers E-U2	768.1			c	643.4		662.9		744.6											618.8	647.6	725.6						881.5	750.3	-3.23	-0.43%	
Heifers E-U3	720.5			c	653.3	639.5	c	666.1		754.5	790.0	673.5		635.7		c	c			631.3	651.8	767.7	607.7	622.7		680.3	643.2	731.6	+1.31	+0.18%		
Heifers E-U4				c	642.1	634.3		670.2												614.4	661.0		644.1	637.5				839.2	643.2	+6.49	+1.02%	
Heifers E-R2	690.5		574.3	599.4	630.2		645.7		735.9	728.0	758.0									610.0	610.8	619.2	721.2	593.7	571.5	c	588.6	836.6	679.8	+0.52	+0.08%	
Heifers E-R3	658.1		578.9	632.7	629.5		650.7		736.5	731.0	672.0				609.7	570.1		c	441.7		752.0	617.3	648.0	724.7	605.4	665.8	c	633.2	856.0	694.6	+0.05	+0.01%
Heifers E-R4				c	626.3	628.7		655.7		704.1	712.0	666.1			620.7	557.9		c		744.0	616.5	659.6	753.3	616.3	574.3	c	652.1	844.0	666.6	+1.20	+0.18%	
Heifers E-O2	557.8	518.7	511.6	541.9	570.0	560.1	624.4		584.9	-	709.8				486.3	485.0			530.8		503.0	538.4	581.7	723.4	578.1	482.2	425.3	543.4	783.6	588.8	-2.28	-0.39%
Heifers E-O3	586.5	639.3	550.3	598.2	585.2		643.9		616.7	664.0	712.6				493.4	543.4		c	500.9		517.0	556.2	603.9	676.7	611.2	597.2	c	580.4	825.4	627.1	+0.96	+0.15%
Heifers E-O4				c	614.3	595.7	c	645.2		631.5	706.3				514.1	541.8				604.0	574.5	604.8	834.0	602.7	607.2		619.5	824.9	627.1	-2.49	-0.39%	
Heifers	637.2	<																														

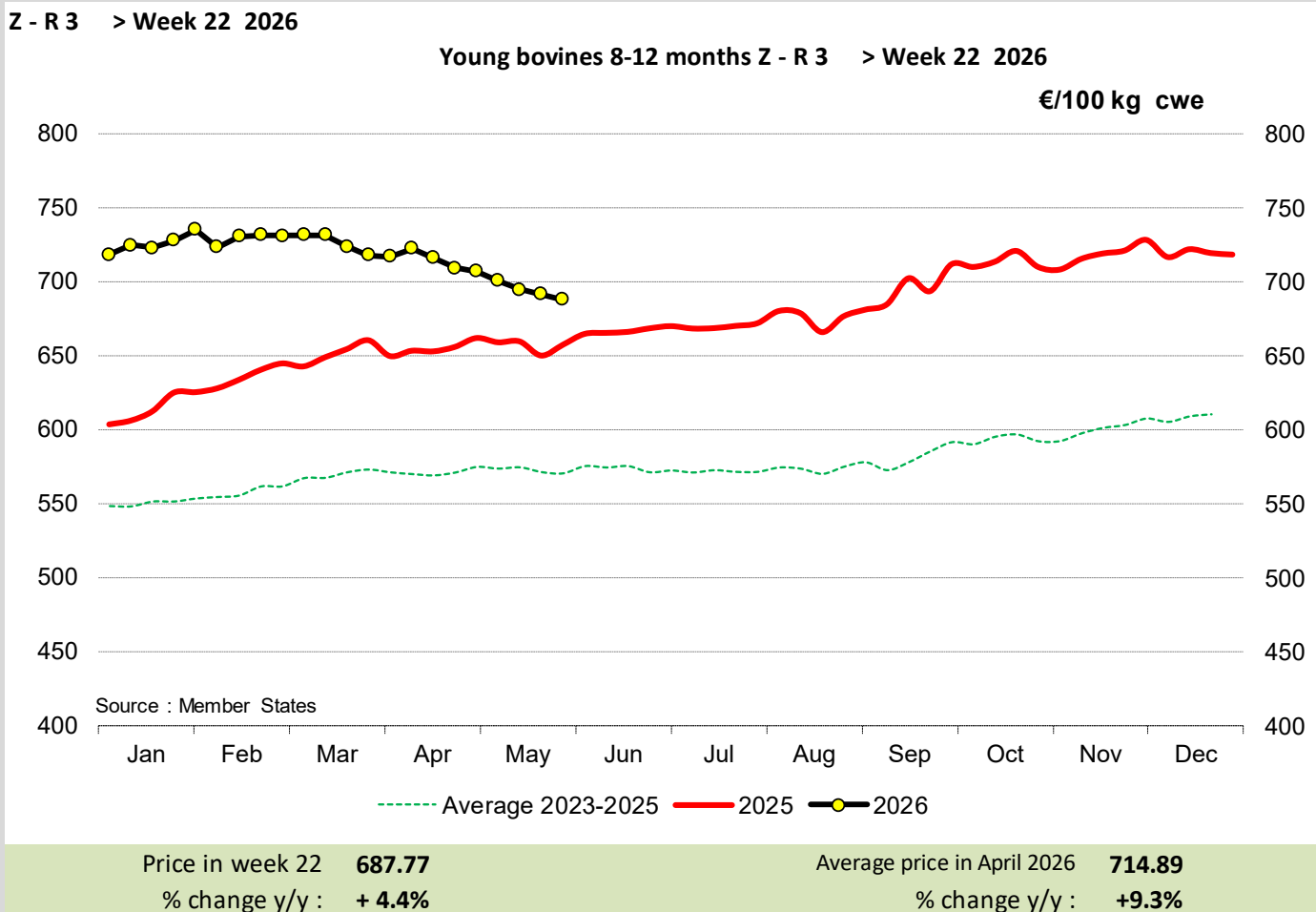


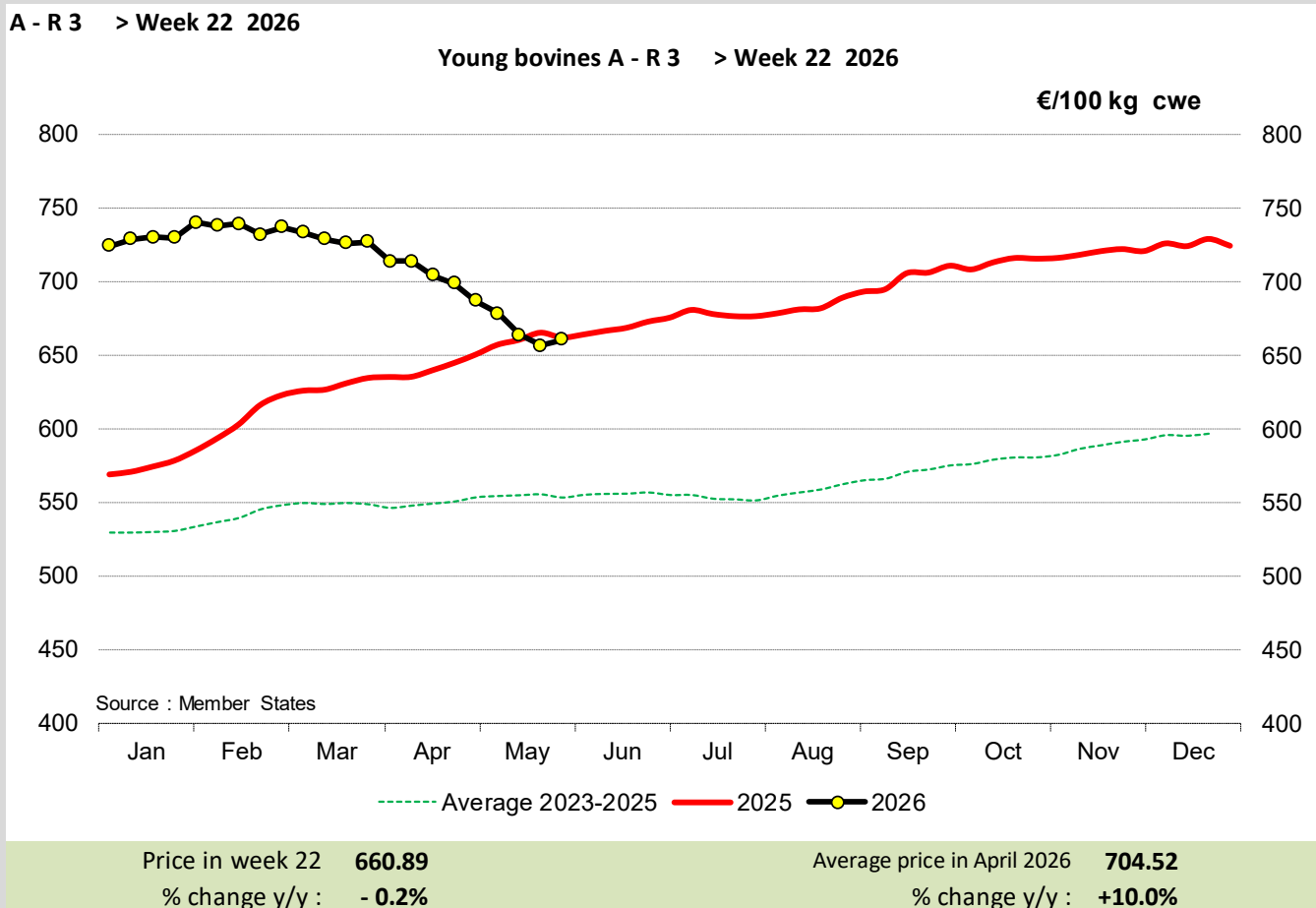
ACZ - R 3 > Week 22 2026

Male bovines carcasses ACZ - R 3 > Week 22 2026



Price in week 22	660.82	Average price in April 2026	699.34
% change y/y :	- 0.0%	% change y/y :	+8.6%
% of ref. price in week 22	297.1%		

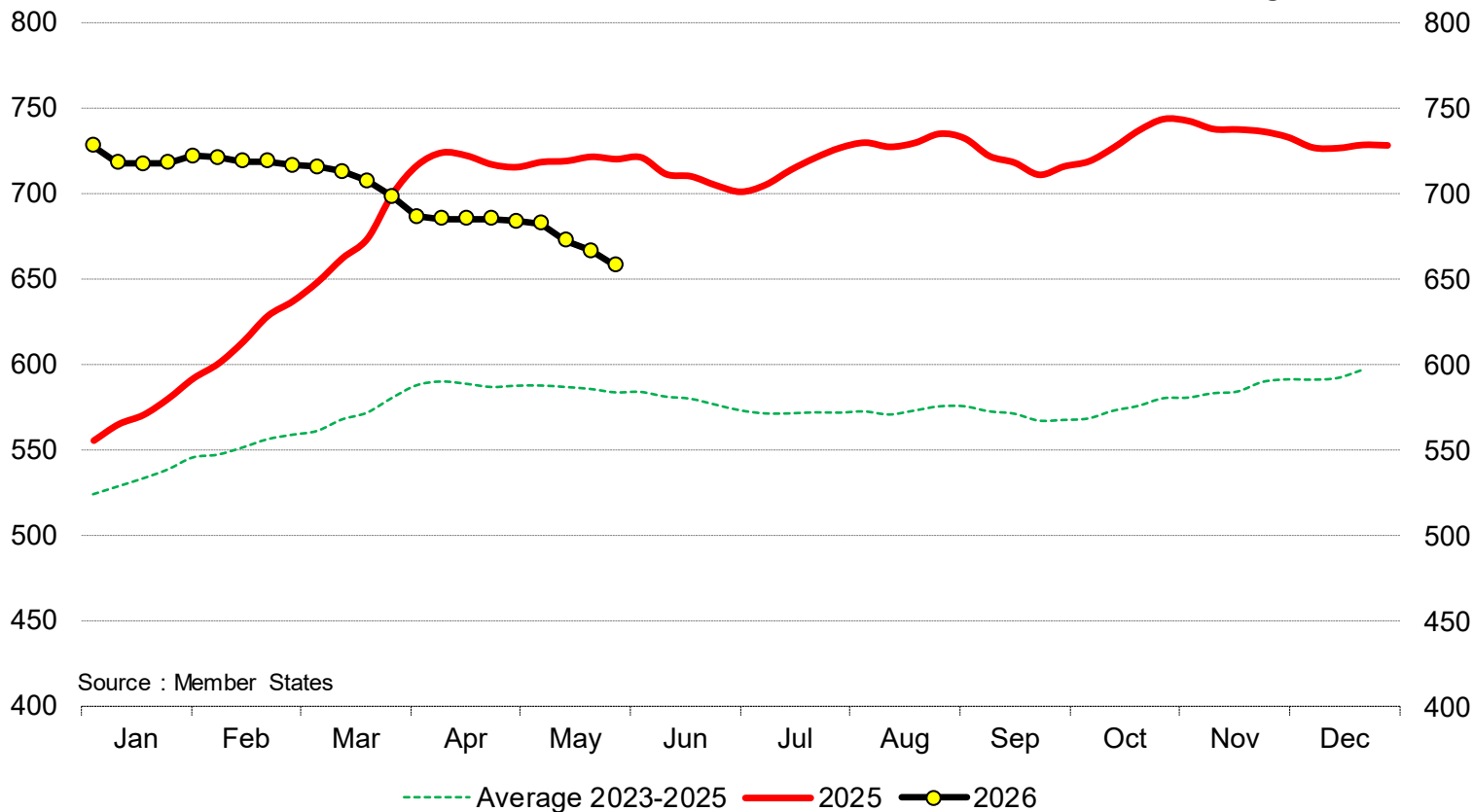




EU Weekly C - R 3 > Week 22 2026

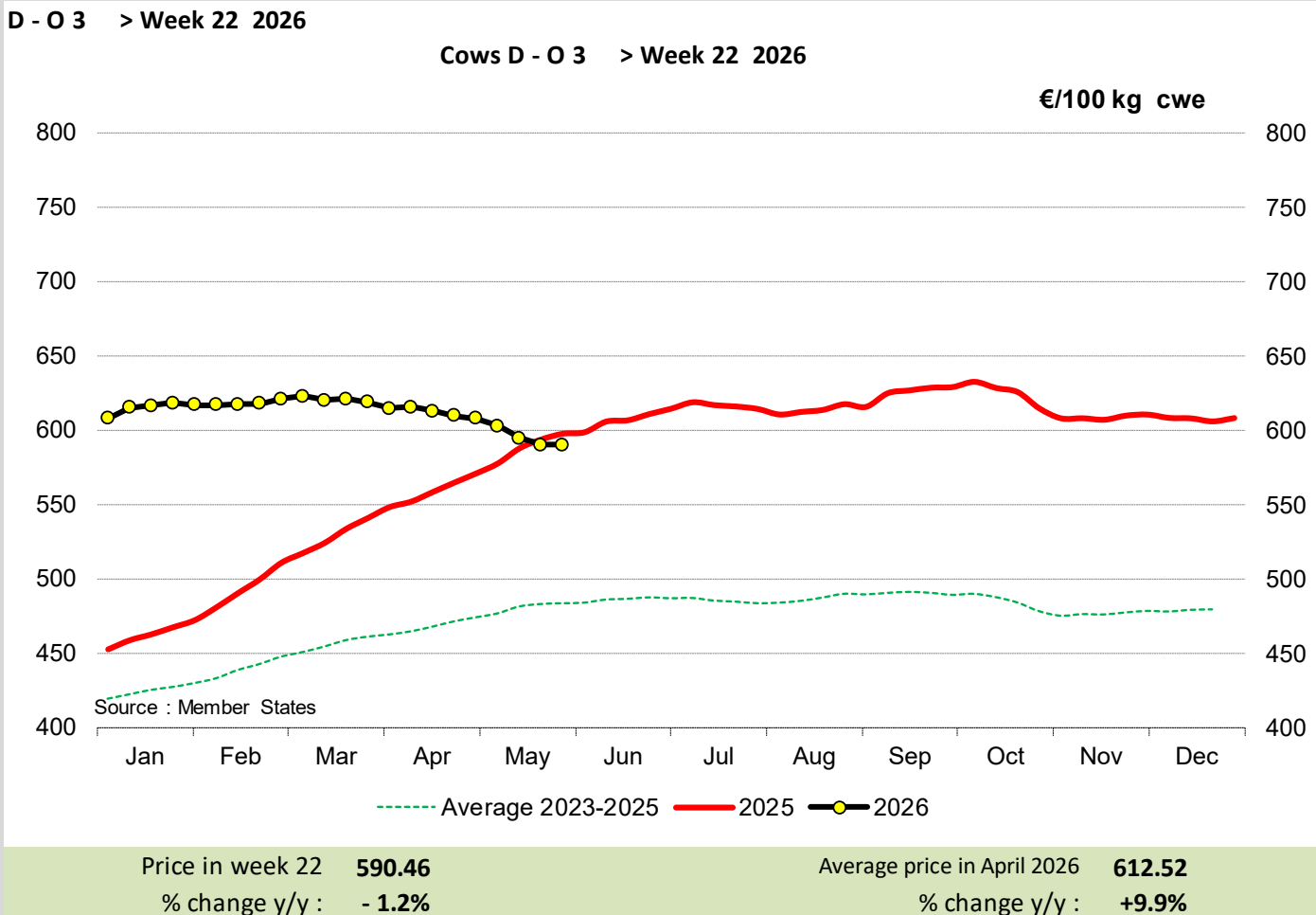
Bullocks C - R 3 > Week 22 2026

€/100 kg cwe



Source : Member States

Price in week 22	657.77	Average price in April 2026	684.70
% change y/y :	-9.4%	% change y/y :	-4.8%

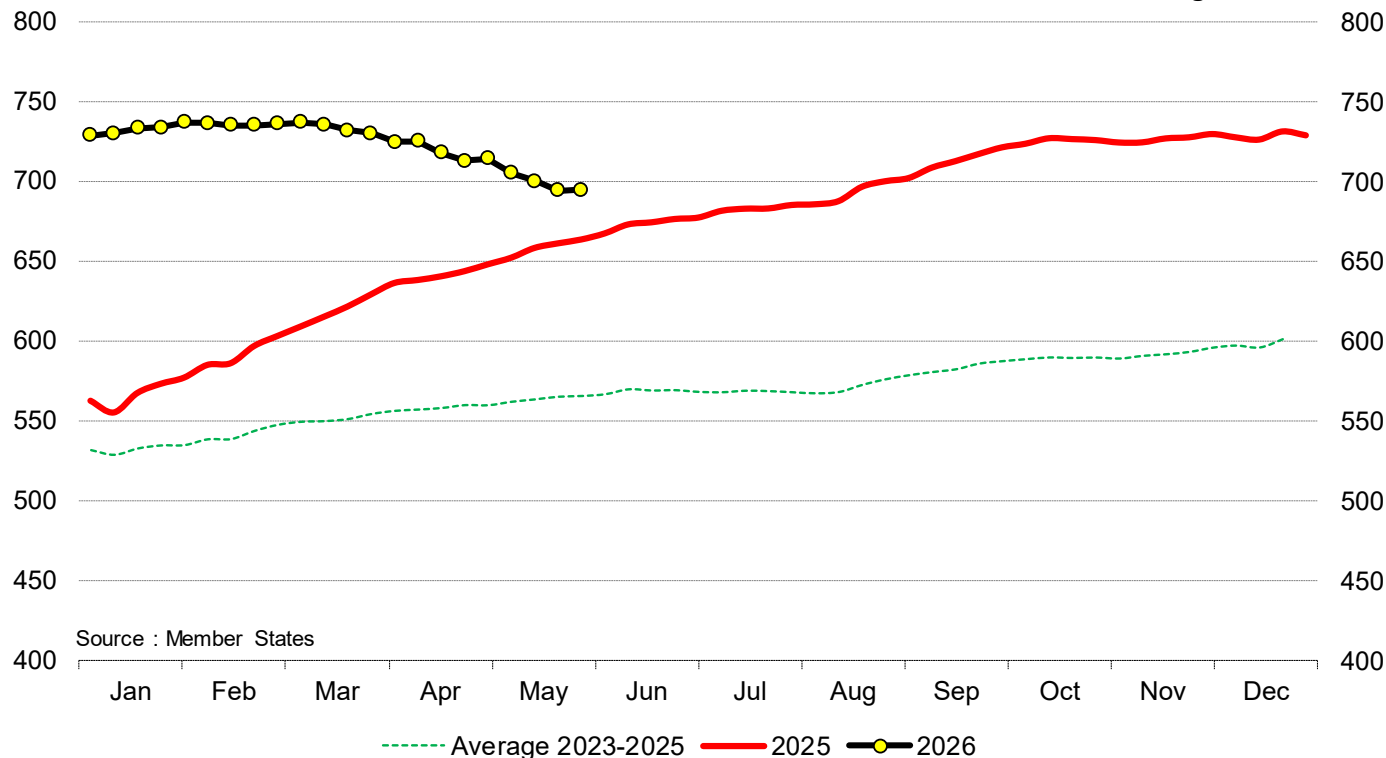




E - R 3 > Week 22 2026

Cows E - R 3 > Week 22 2026

€/100 kg cwe



Source : Member States

Price in week 22 **694.57**
% change y/y : **+ 4.5%**

Average price in April 2026 **719.18**
% change y/y : **+12.3%**



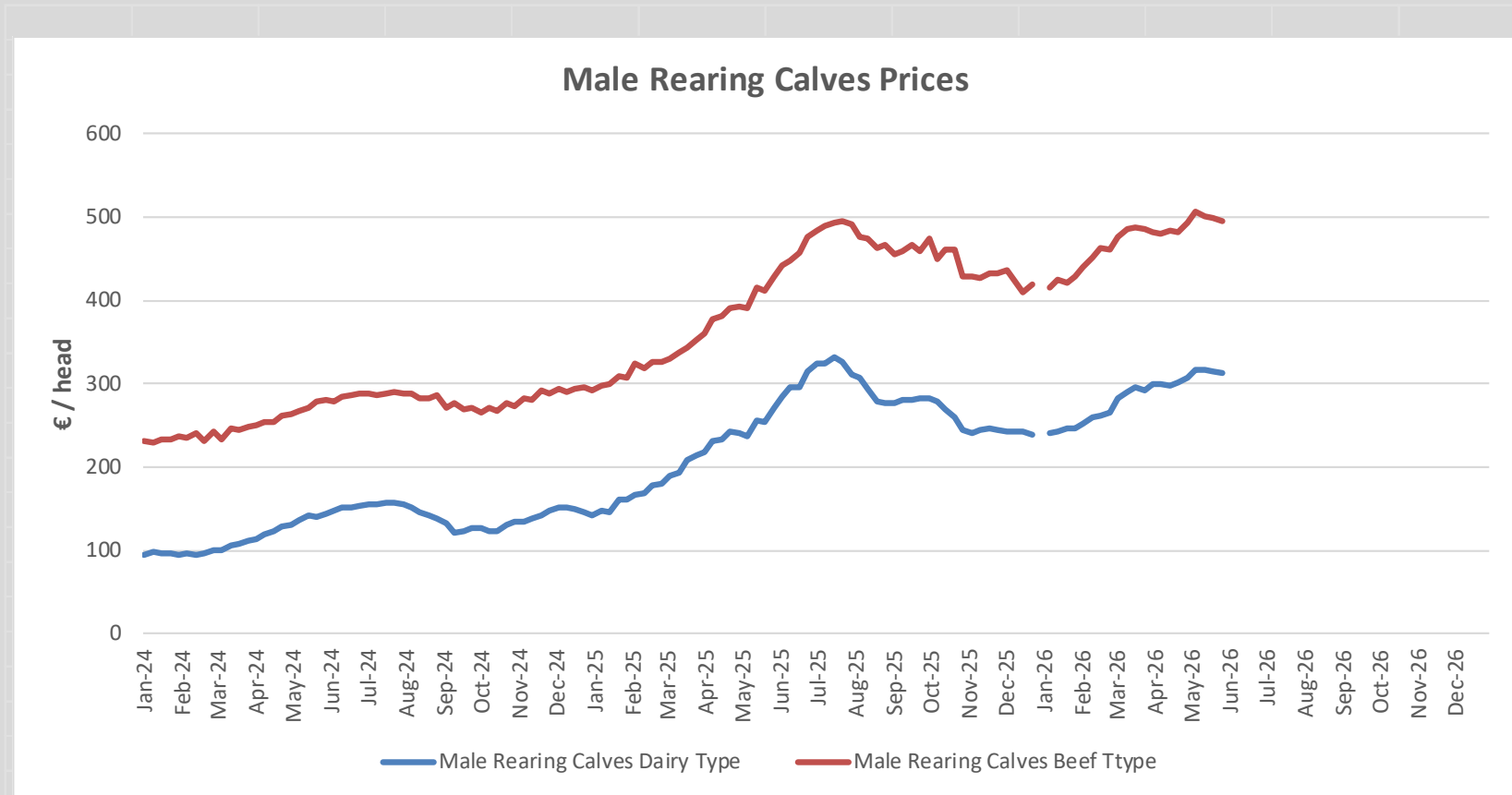
2026 Week 22 from 25/05/2026 to 31/05/2026

Prices of Live Bovine Animals

Male Calves aged between 8 days and 4 weeks																
	BE	DK	DE	IE	ES	FR	HR	IT	NL	AT	PL	PT	RO	SI	SE	EU
Male Calves Dairy type																
Market Price € / head	252.17	321.18	318.59	310.34	159.39	304.41		328.35		314.39						313.46
Previous week market price	252.17	321.15	314.38	303.88	159.39	308.34	1 387.03	328.60	293.00	413.33	357.35					315.84
Difference with previous week	0.00	0.03	4.21	6.46	0.00	-3.93		-0.25		-98.94						-2.38
% of EU average	80	102	102	99	51	97		105		100						
Coefficient	3.07		21.25	8.77	4.58	18.21	0.42	10.44	9.04	3.17	11.61		6.23			
Male Calves Beef type																
Market Price € / head	668.33		494.80	444.05	301.87	580.96	957.70	394.70	529.00	638.46			607.56			496.07
Previous week market price	668.33		497.10	418.99	301.83	590.87	961.29	395.11	526.00	709.87	417.21		625.45			499.55
Difference with previous week	0.00		-2.30	25.06	0.04	-9.91	-3.59	-0.41	3.00	-71.41			-17.88			-3.47
% of EU average	135		100	90	61	117	193	80	107	129			122			
Coefficient	3.49		17.06	9.12	11.29	27.37	0.53	9.01	6.37	2.80	8.52		4.45			

Store Cattle																
	BE	DK	DE	IE	ES	FR	HR	IT	NL	AT	PL	PT	RO	SI	SE	EU
Young Store Cattle																
Market Price € / kg	5.39			4.32	5.75	5.42	5.23	5.22		3.89		5.18			4.64	5.08
Previous week market price	5.39			4.39	5.87	5.42	5.28	5.29		3.96		5.40			4.63	5.12
Difference with previous week	0.00			-0.07	-0.12	0.00	-0.05	-0.07		-0.07		-0.22			0.01	-0.04
% of EU average	106			85	113	107	103	103		77		102			91	
Coefficient	5.00			19.79	8.71	42.65	1.36	8.18		5.63		4.28			4.39	
Yearling Male Store Cattle																
Market Price € / kg	5.96		11.50	3.75		4.66		5.41		3.60		4.08			5.26	6.27
Previous week market price	5.96		10.06	3.78		4.66		5.77		4.00		4.76			4.79	5.96
Difference with previous week	0.00		1.44	-0.03		0.00		-0.36		-0.40		-0.68			0.47	0.31
% of EU average	95		183	60		74		86		57		65			84	
Coefficient	3.09		25.74	24.66		25.38		10.27		5.26		1.85			3.75	
Yearling Female Store Cattle																
Market Price € / kg	2.91		7.09	3.73		4.82		5.07		3.80		4.41			4.71	5.12
Previous week market price	2.91		6.92	3.79		4.82		5.08		3.11		4.01			4.41	5.04
Difference with previous week	0.00		0.17	-0.06		0.00		-0.01		0.69		0.40			0.31	0.08
% of EU average	57		139	73		94		99		74		86			92	
Coefficient	5.02		25.19	14.48		33.10		13.01		3.87		2.17			3.17	

Calves Slaughtered before 8 months																
	BE	DK	DE	IE	ES	FR	HR	IT	NL	AT	PL	PT	RO	SI	SE	EU
Market Price € / 100 kg			c			836.50	822.03	699.75	757			672.24		659.11		765.24
Previous week market price			c			854.40	780.72	722.00	757.00			677.85		686.25		773.64
Difference with previous week						-17.90	41.31	-22.25	0.00			-5.61		-27.14		-8.40
% of EU average						109	107	91	99			88		86		
Coefficient	9.26					26.41	0.92	17.22	36.98			1.22		0.26		



Male Rearing Calves Beef Type

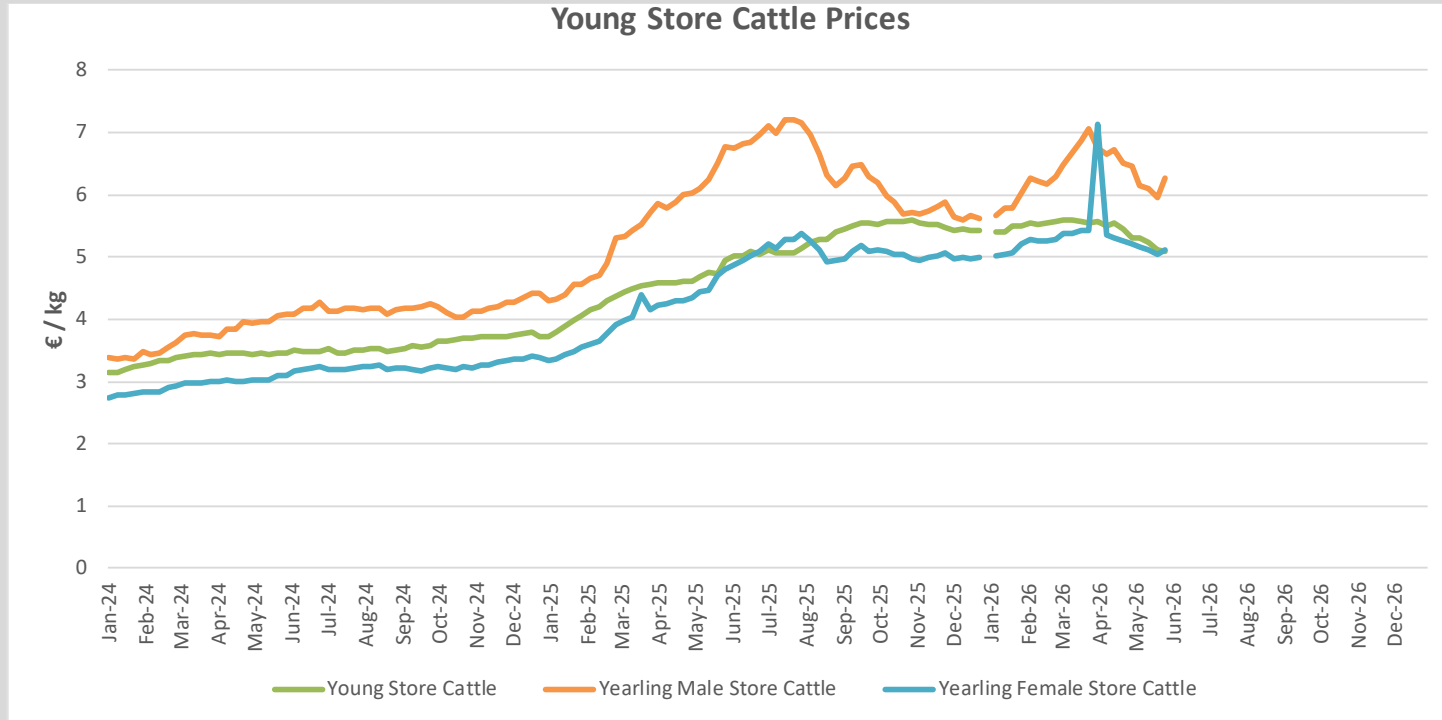
Price in week 22 **496.07**

% change y/y : **+15.5%**

Male Rearing Calves Dairy type

Price in week 22 **313.46**

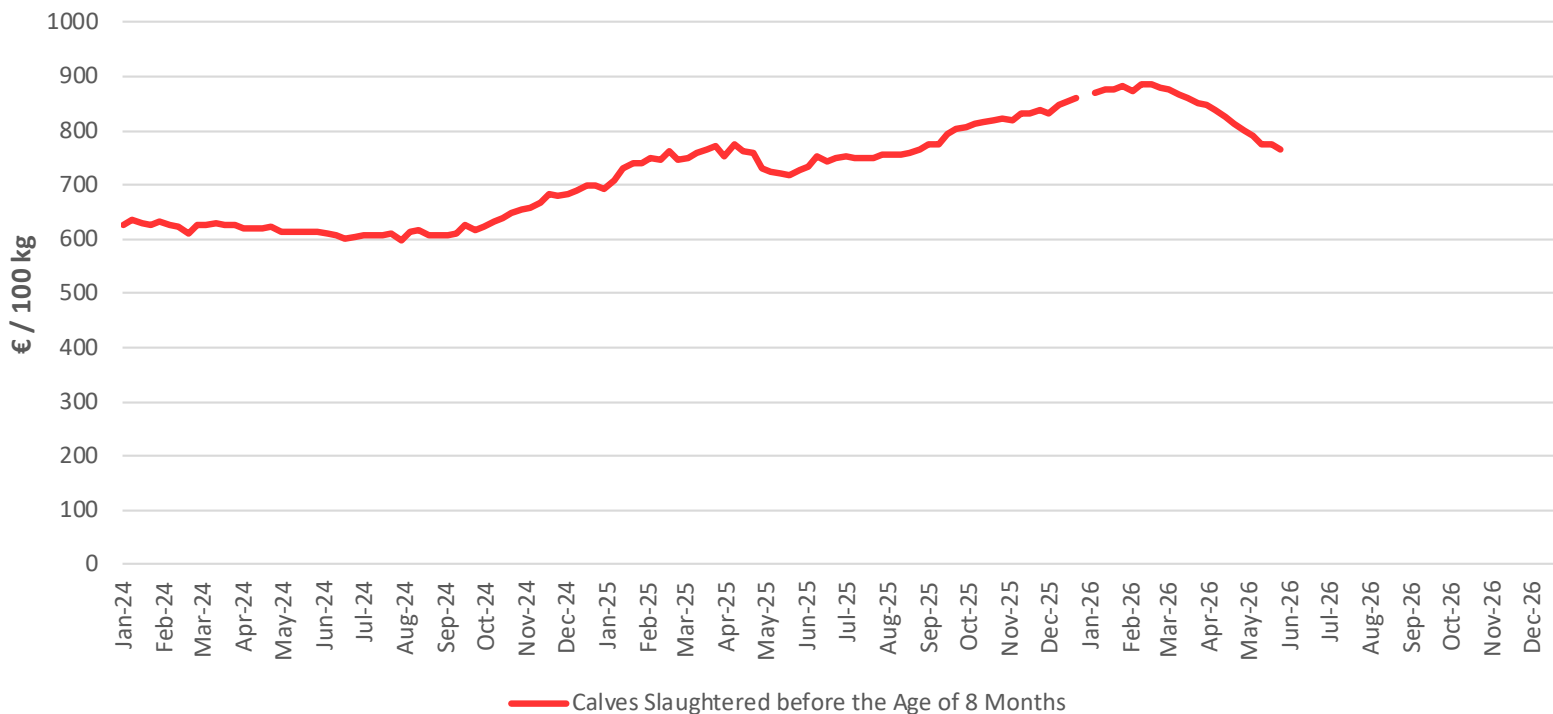
% change y/y : **+15.9%**



Young Store Cattle		Yearling Male Store Cattle	
Price in week 22	5.08	Price in week 22	6.27
% change y/y :	+2.9%	% change y/y :	-7.3%
Yearling Female Store Cattle			
Price in week 22	5.12		
% change y/y :	+6.6%		



Calves Slaughtered before the Age of 8 Months



Price in week 22 **765.24**

% change y/y : **+5.4%**